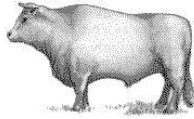


COLEMAN'S CHAROLAIS CATTLE



TUG – O – WAR CONTEST



At the: KAIKOHE A P & H SHOW

Saturday 19 January 2019

Cnr Ngawha Springs Road & H/Hway 12 – Entry: GATE 1

Entry Fee: \$12 per team of 6 people

Prize Money: 1st \$150.00 (Sponsored by Coleman's Charolais Cattle)
2nd \$60.00

Commences: 11am – Dairy ring area.

Class 1 Men's

Class 2 Women's

Class 3 Combined Men and Women – 3 of each sex in team.

RULES: - Local Rules Apply

1. 6 members per named team
2. 2 registered teams to start the competition
3. Best of 3 pulls moves onto next round
4. Combat will be on bare feet
5. No gloves, digging for feet, wrapping, sitting or hand over hand.
6. Fouls include: above (5) also falling over touching the ground, lowering of elbow below the knee level.
7. Two fouls results in disqualification.
8. The winning team is the first to pull the opposition over the center red mark to the oppositions white 4-meter mark.

COLEMAN'S CHARALAIS CATTLE

TUG – O – WAR ENTRY FORM

\$12 per team: prepay and send Form to:

Kaikohe A P & H Association, PO Box 295, Kaikohe 0440 – E: Kaikohe.show@yahoo.co.nz

Payment: BNZ: 02-0332-0015436-00 Reference: TugOWar

OR pay on Show Day at Secretaries Office prior to commencement.

TEAM NAME:

(Tick) CLASS ENTERED:

☐ **Class 1 Men's**

☐ **Class 2 Women's**

☐ **Class 3 Combined**

TEAM MEMBERS:

1.

2.

3.

4.

5.

6.

SHOW ADMISSION: Every person including competitors and handlers
will be charged an admission fee unless a Financial Member of the Kaikohe A P & H
Association. **Admission: \$10/person 15yrs and over.**