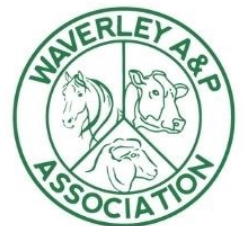


# WAVERLEY A&P ASSOCIATION 100TH ANNUAL SHOW EQUESTRIAN SCHEDULE

Tuesday  
15th November 2022  
Dallison Park  
Waverley



Entries Close 5pm Monday 14th November 2022

The Waverley A&P Association  
acknowledge the generous support that  
is given by so many local businesses  
and organisations —without this our  
Annual Show would not be possible



Petapix – Field & Event Photography  
[www.petapix.co.nz](http://www.petapix.co.nz)



# Tuesday 15th November 2022

## Table of Contents

Page 4	Timetable
Page 5	Ring/Judge Schedule
Page 6	Map
Pages 7–12	Conditions of Entry/H&S
Pages 13–28	Classes
Page 29	Horse Section Class Sponsors
Page 31	Contact Information/Payment Details



# Tuesday 15th November 2022

## Equestrian Timetable

### Main Oval – Ring One Show Jumping

9.00am – Classes 300 – 302

11.30am – Break for Grand Parade

Not before 1.00pm – Classes 303 – 307

### Main Oval – Show Hunter

8.30am – Show Hunter Ponies – Classes 200 – 207

11.30am – Break for Grand Parade

Not before 1.00pm – Show Hunter Ponies – Classes 210 – 212

Show Hunter Horses – Classes 100 – 106

(To Follow Cat C Ponies)

### Show Paddock – Ring Two Show Jumping

9.00am – Classes 400 – 403

11.30am – Break for Grand Parade

Not before 1.00pm – 30minutes Pony Only Practice Rounds

Classes 404 – 406 To Follow

### Lance/McAree Paddock – Working Hunter

Not before 1.00pm – Horses – Classes 700 – 708

Ponies to follow Horses – Classes 600 – 607

### Lance/McAree Paddock – Recreational Junior Riders

8.30am – 16 years & under LEAD – Classes 801–810

8.30am – 16 years & under RIDDEN No Canter – Classes 812–822

8.30am – 16 years & under RIDDEN Canter in a Group –  
Classes 901–913

# Tuesday 15th November 2022 Ring / Judge Schedule

## MAIN OVAL

Show Jumping – Ring One		Show Hunter Ponies & Horses	
Start Time	Judge: Megan Myers Course Builder: Gary Sinclair	Start Time	Judge: Holli Marshall Course Builder: Holli Marshall
9.00am	Classes 300 – 302	8.30am	Classes 200 – 207
Not before 1.00pm	Classes 303 – 307	Not before 1.00pm	Classes 210 – 212 Classes 100 – 106

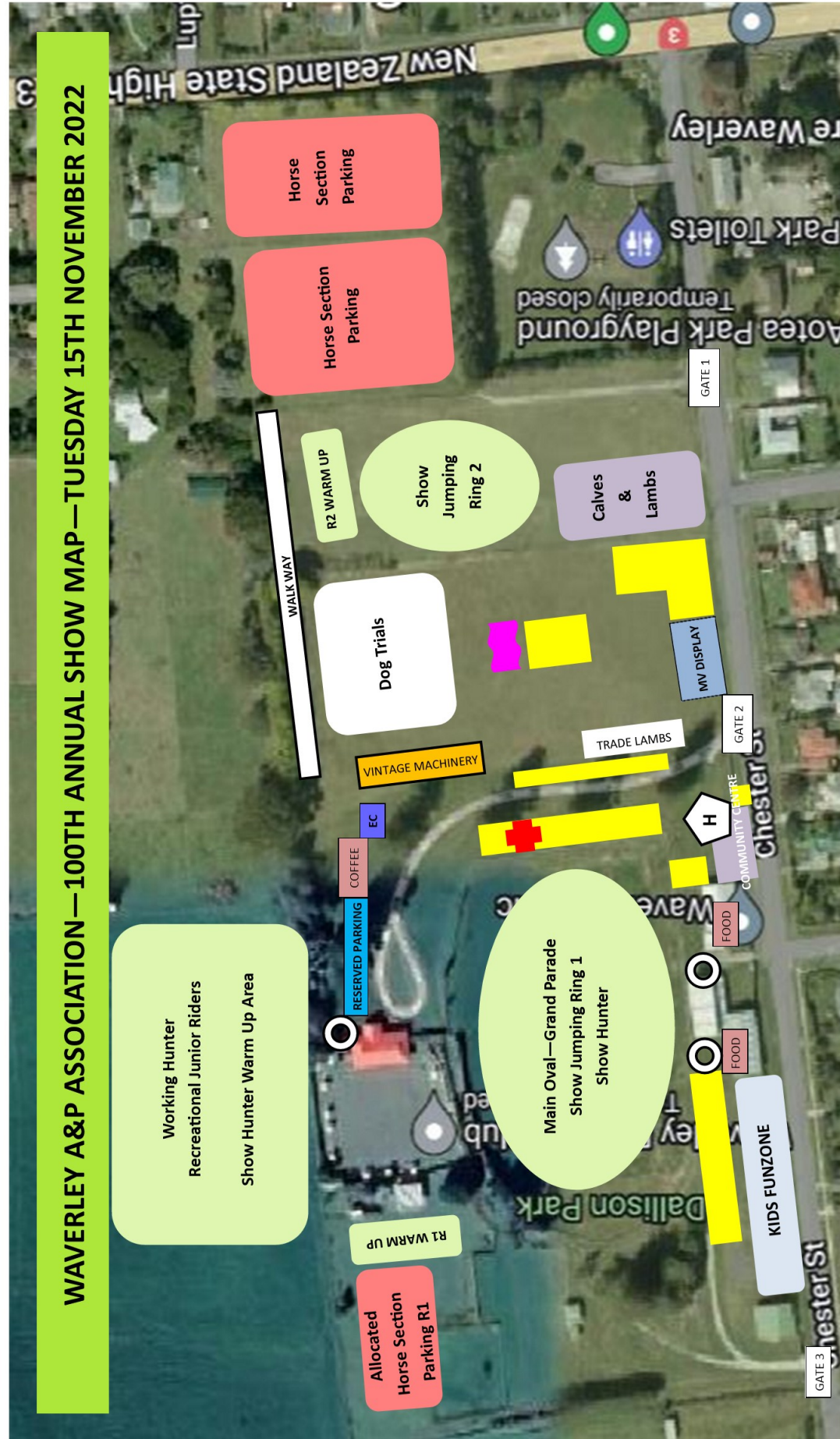
## SHOW Paddock

## LANCE/MCAREE Paddock

Show Jumping – Ring Two		Working Hunter Horses & Ponies	
Start Time	Judge: Beverley Prankerd Course Builder: Gary Sinclair	Start Time	Judge: Barbara Bilski
9.00am	Classes 400 – 403	Not before 1.00pm	Classes 700 – 708
Not before 1.00pm	30mins Practice Rounds Classes 404 – 406	Following Horses	Classes 600 – 607

## LANCE/MCAREE Paddock

Blue Ring 1 –		Yellow Ring 2		Green Ring 3	
8.30am	Junior Rider 16yrs/Under LEAD	8.30am	Junior Rider 16yrs/Under RIDDEN No Cantering	8.30am	Junior Rider 16yrs/Under RIDDEN Cantering



- ⊙ RING—TOILET FACILITIES
- ⚡ PURPLE FLAG—CLYDESDALES & WAGON
- ⊕ RED CROSS—FIRST AID
- ⬡ YELLOW BOXES—TRADE EXHIBITS
- ⊙ GATE 1—HORSE SECTION/CALVES & LAMBS PARKING
- ⊙ GATE 2—TRADE EXHIBIT/DOG TRIALS/OFFICIALS ONLY
- ⊙ GATE 3—MARKET/FUNZONE EXHIBITORS & ALLOCATED HORSE SECTION PARKING ONLY
- ⊙ HORSE SECTION OFFICE—LOCATED AT THE COMMUNITY CENTRE
- ⬡ H COMMUNITY CENTRE

## Tuesday 15th November 2022 Conditions of Entry

1. All entries must be completed via EvoEvents – <https://www.evoevents.co.nz/>
2. All competitors compete at own risk.
3. **Safety Helmets: Please abide by new ruling from RAS and ESNZ.** See Page 10.  
<https://www.ras.org.nz/equestrian/health-and-safety/>
4. There is to be no trimming of whiskers, eye or inner ear hair/whiskers of horses/ponies competing at RAS affiliated A&P Shows/Events. This is in line with the same animal welfare approach taken by the Equestrian Sport New Zealand (ESNZ) and New Zealand Pony Clubs Association (NZPCA). See Page 11 for full information.  
<https://www.ras.org.nz/equestrian/whisker-and-inner-ear-trimming/>
5. Open ponies must be ridden by riders 16 years and under.
6. Age of horse, pony and rider as of 1<sup>st</sup> August 2022.
7. Ring Stewards will record wins on performance cards at the conclusion of each Working Hunter class. Show Entry Secretary can sign attendance cards.
8. **Stallions and Colts:** It is compulsory for all Stallions and Colts to be shown in a bit, (except Foals, Miniature horses and Shetland yearlings), and must wear two (2) official “S” ID badges attached to each side of their bridle or halter, at all times. Handlers/Riders must wear a Hi Viz vest when outside the ring, and riders of stallions must wear 2 RAS Stallion armbands. (See Rule CDE 11 g) and i) for ages of stallion riders/handlers).
9. Pony Club members state Club affiliated with jumping classes.
10. All competitors or legal guardians to acknowledge exhibitor declaration on entry via EvoEvents. The attention of exhibitors is particularly drawn to the conditions relating to the misuse of substances, and the intention of the Committee to undertake testing for forbidden substances.
11. This Show supports the RAS ‘Yellow Card’ system. A Yellow Card will be issued, in cases of offences in respect of abuse of animals or inappropriate behaviour as per the RAS Constitution and the RAS Rules & Regulations/Bylaws including the Equestrian Rulebook, the RAS affiliated Show/Event/registered Measuring Stand and their grounds and their duly appointed delegates may deliver to the Person Responsible a Yellow Warning Card (either immediately or within 10 days of the show) which suspends any penalty until possible new offences. Full wording of the ‘Yellow Card’ system is available to view on the RAS website – [www.ras.org.nz](http://www.ras.org.nz).
12. **Clean Sport** – The Rules of the Royal A&P Society of New Zealand regarding Clean Sport apply. Competitors are advised that tests for forbidden substances may be carried out during the Show and that testing of all animals is at the person responsible risk.  
Forbidden Substance – Any substance capable of affecting the speed, stamina or courage or conduct of a horse or pony by its action upon the central or peripheral nervous system of the cardio-vascular, respiratory, alimentary, digestive, musculoskeletal or urogenital systems.
13. **Arrears** – No person who is in arrears regarding entry fees, subscriptions, or any other show charge is eligible to compete at any affiliated show/event. Proof of payment will be required before any restriction is lifted.

14. **Summary of RAS Resolution Process** – the full process can be found on the RAS website. The principle behind the process is to deal with the matter as it comes to hand and in most cases, it should be dealt with directly by the show. If the matter is regarding an RAS official, the show to forward it on to the RAS CEO to deal with this in an appropriate manner.
15. **LEGAL LIABILITY:** Our Association's Public Liability policy does not cover Competitors or Exhibitors. Each Exhibitor is responsible for their own Liability Insurance and must [supervise and control their animals at all times](#), Exhibitors must comply with Animal Legislation and Health & Safety at Work Act 2015 and subsequent amendments.
16. **ALL DOGS** to be on leash.
17. **STABLES/YARDS** are available at the Waverley Racecourse on Monday night. **For bookings please ONLY email [bdsimson@farmside.co.nz](mailto:bdsimson@farmside.co.nz)** . All stables, yards and areas around floats & trucks must be left clean. Please place hay/sawdust/manure etc in bins designated for this.
18. **SHOW LEVY:** \$10 per mount.
19. **REFUNDS:** Requests to be made in writing and will be less 20%.
20. **Covid-19 Refunds:** If the Show is cancelled, we will refund 100% of class entry fees and the show levy, less any EvoEvents fees that are incurred when entering.
21. **NO LATE ENTRIES. Entries to be completed via the EvoEvents site by 5pm Monday 14<sup>th</sup> November 2022.**
22. **CLASS CHANGES:** \$2.00 per class.
23. **RAS Equestrian Levy** of \$1.15 per class will be charged in addition to the class entry fee.
24. **PROTESTS:** Every objection or protest must be made in writing within 30 minutes of the Class in question, signed by the person making complaint and delivered to the Secretary. The objector shall, at the time of making such objection, lodge sum of \$50.00 which shall be forfeited to the Association should the objection be considered frivolous or vexatious. The deposit will be refunded if protest is upheld.
25. **START TIMES:** Are approximate only but will be adhered to as closely as possible.
26. **There will be approximately 1 hour break in the entire Show for the Parade/Speeches in the Main Oval** beginning approximately 11.45am, this is highlighted in the schedule. We will endeavour not to stop a class part way. Although it is provided that horses may compete in more than one class, and or all such classes may be judged simultaneously at the convenience of the judges or stewards, in all such cases where exhibitors have an exhibit entered in more than one class, they must select in which class they compete.
27. **All Show Jumping and Show Hunter Riders, Horses and Ponies** must compete with the appropriate ESNZ membership. All classes run under ESNZ rules current at the time of the show. Jumpers can compete in three classes.
28. Show Hunters/Show Jumpers eligible for Junior Rider classes held on Tuesday 15<sup>th</sup> November 2022, **except for Low Pony Jump/High Pony Jump class numbers 822, 912 & 913.**
29. **Ponies competing in Show Pony and Saddle Hunter Pony are NOT eligible to compete in Junior Rider classes held on Tuesday 15<sup>th</sup> November 2022.**



30. CUPS: All cups will be retained by the Waverley A&P Association and engraving costs will be met.
31. After receiving all entries, sections that have classes with no entries or insufficient entries may be cancelled or merged with another class.
32. Due to time restraints, class entry may be capped if required.
33. Committee reserves the right to alter the programme.

## ESNZ JUMPING AND CASUAL LEVIES

	Horse / Pony with ESNZ Equine Registration but no Jumping Discipline Start	Horse / Pony without Equine Registration	All Horses and Ponies	Introductory Members or riders not registered with ESNZ
Ponies 80cm and under Horses 90cm and under (Will be named INTRO)			\$5 ESNZ Jumping Levy	Introductory Membership Or Casual Day Membership Start – \$15.88/day
Pony 1.00m and under Horse 1.10m and under (Cannot compete in Series Classes)	\$15 Flexi-Start	\$20 (Including \$15 Flexi-Start)	\$5 ESNZ Jumping Levy	Not Eligible
Above – 1.10m Horses & 1.00m Ponies and Series Classes	Not Eligible	Not Eligible	\$5 ESNZ Jumping Levy	Not Eligible

For Horses/Ponies **WITHOUT** current ESNZ Equine Registration – \$20 (includes \$15 Flexi-Start)

For Horses/Ponies **WITH** current ESNZ Equine Registration but no Jumping/Show Hunter Discipline Start – \$15 Flexi-Start

Horses are restricted to 1.10m and Under. Ponies are restricted to 1.00m and Under.

Horses/Ponies not eligible to start in Series Classes.

Casual Rider Membership – \$15.88/day









\$5 ESNZ Jumping Levy

<https://www.nzequestrian.org.nz/disciplines/jumping-show-hunter/resources-remove/>

## Health & Safety

### Helmet Tagging

All riders, including harness drivers/with the exclusion of heavy horse (Clydesdale) working classes, competing at RAS affiliated A&P Shows/Events must wear protective headgear, which includes a retaining harness secured to the shell at more than two points. Such headgear must be worn with the chinstrap properly adjusted and fastened when in the arena or ring, the practice area, collecting rings or anywhere else within a Showground or the grounds of an affiliated Event. Hats/helmets must conform with one of the current approved safety standards. These standards may be subject to change but the latest list can be found at <https://www.ras.org.nz/equestrian/health-and-safety/>. RAS will advise any changes via their website and Facebook. All hats/helmets that conform must be identified by the current tag system implemented by NZPCA, ESNZ and RAS.

Helmet Standard	Safety Mark	Allowed at the following activities:
PAS 015:1998 or 2011 (or later) with BSI Kitemark or IC mark	 or 	All Activities
VG1 01.040 (2014-12 or later) - Must carry BSI kitemark or IC mark from August 2023	 or 	All Activities
Snell E2001, E2016 (or later) with the official Snell label and number	 or 	All Activities
ASTM-F1163 2004a (or later) with the SEI mark		All Activities
AS/NZS 3838 1998, 2003, 2006 (or later)		All Activities

## HELMET TAGGING




**TAG PLACEMENT**  
Wrap the helmet "tag" around the harness, high up, so it is visible, but out of the way. Please wrap it around the left side harness where possible.



**HELMET STANDARDS ARE USUALLY FOUND IN THE HELMET'S LINING:**

-  on an info tag;
-  direct onto the lining;
-  or on a sticker.

## Falls/Concussions and Reporting

The Waverley A&P Association follows the ESNZ guidelines in regard to falls, concussion and injury reporting. In the event of a fall, in any part of the grounds including warm up areas and parking, the rider is required to get clearance from the medical officer in attendance. (Peak Safety)

A 'Fall Slip' will be available from the nearest gate steward—it is the responsibility of the rider to have this slip completed before remounting.

*ESNZ General Regulation Article 150 8. If a concussion or serious injury is suspected, by a member of the Ground Jury at the event, the rider should be immediately removed from participating and be issued with a Blue Card concussion note. A Blue Card means that a rider is stood down from all riding activities until clearance from a registered GP or registered medical specialist can be obtained. A copy of their Blue Card will also go straight to ESNZ, which will then go on that rider's profile, visible to Organising Committees and officials.*

Go to the following page for full information.

<https://www.nzequestrian.org.nz/wp-content/uploads/Blue-Card-RTR-Form-2019-1.pdf>

Peak Outdoor Safety & Emergency Management will be onsite from 8am to 5pm

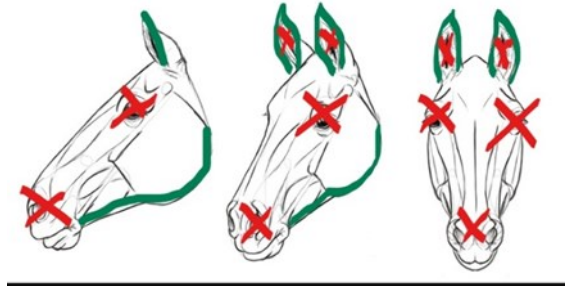
<https://peaksafety.co.nz/safety-services/event-medics/>

**X** Not acceptable to trim

## INFORMATION AROUND WHISKER, EYE & EAR TRIMMING AT RAS AFFILIATED A&P SHOWS & EVENTS

From 1 January 2022, the trimming of a horse/pony's whiskers, eye and inner ear hair is banned for any horses/ponies exhibiting or competing at affiliated A&P Shows or Kindred Events.

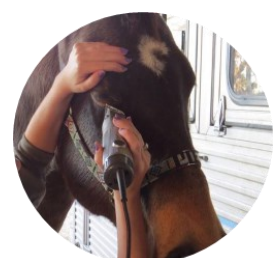
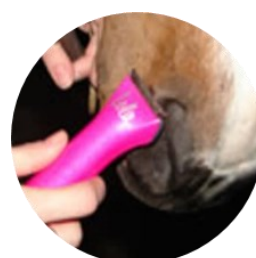
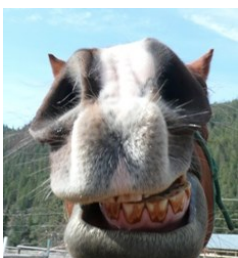
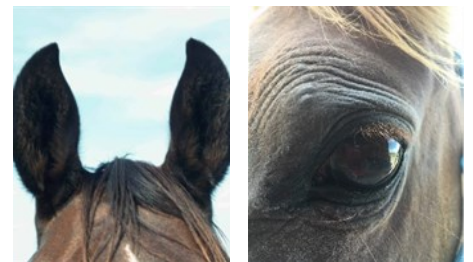
Acceptable to trim



### RAS Equestrian Rule – GR. 6

- The Royal Agricultural Society (RAS) has teamed with Equestrian Sports New Zealand (ESNZ) and NZ Pony Club (and the FEI from 2021) and banned the trimming of whiskers, eye and inner ear hair for horses and Kindred Events from the 1 January 2022.
- RAS rules state GR6 Abuse of Exhibits b) Abuse can be defined as intentionally acting in a way, which may cause pain or unnecessary discomfort to a horse.
- RAS further considers other examples of abuse (but not limited to): whip or beat an exhibit excessively; subject an exhibit to any kind of electric shock device; excessive or persistent use of spurs; or to jab the exhibit in the mouth with the bit; remount or attempt to remount an obviously exhausted, lame or injured exhibit; rap an exhibit anywhere in or outside the grounds of the event; hyper sensitise any part of an exhibit; leave exhibit without adequate food, drink and exercise.
- Any person witnessing any form of abuse should utilise the RAS Resolution Process. For the purposes of this matter - illegal trimming of whiskers, eye or inner ear hair – from 1 January 2022 a protest form should be filed with the affiliated A&P Show/Kindred Event, citing the rule broken as being GR6 b. All affiliated Shows & Events have a template protest form available through the RAS Resolution Process which can be found here: <https://www.ras.org.nz/wp-content/uploads/2018/08/RAS-Resolution-Process-updated-2018.doc.pdf>.
- From the 1 January 2022, any upheld protests regarding the matter of whisker, eye & inner ear trimming should be handled in the following manner:
  - \* The exhibitor/competitor is to be given a copy of the RAS whisker, eye & ear trimming pamphlet for educational purposes.
  - \*The exhibitor/competitor and horse/pony are to be asked to leave the show ring
  - \*Any prizes, ribbons and/or placings are to be forfeited.
- Please note all RAS Equestrian Judges will be advised, when judging, they are not to discriminate against facial whiskers and hair.
- Full RAS Equestrian Rules and Regulations can be found here: <https://www.ras.org.nz/wp-content/uploads/2019/07/RAS-Rulebook-2019-FULL.pdf>

- Horses have whiskers on their face around their eyes and muzzle (nose and lips). In these locations whiskers not only help protect delicate tissue, but also help compensate for the blind spots a horse has in front of its face and underneath its nose.
- A horse's whiskers (called vibrissae) are actually an incredibly important sense to them. The whiskers around the eyes and muzzle are extremely sensitive and have a rich nerve supply.
- Ear hair serves a few special functions: to protect the inner ear skin from bugs, sun, and foreign objects. The outer edge of the ear also grows some hair, and in some cases, it can get pretty wild.
- With ears you can find a happy medium – clip the edges of the ear by folding it like a taco and zipping your clippers down the outside of the ear. Leave the insides.



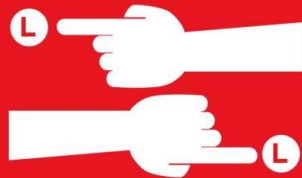


# CHANGE *the* REIN

## Warm-up Etiquette



Be friendly and  
check in with the  
gate steward



Pass left hand  
to left



Keep moving  
forward on  
the track



Red flag to  
your right



Stop if there is a  
loose horse or  
rider fall



Be courteous  
to others and  
have fun!

#changetherein



EQUESTRIAN SPORTS  
NEW ZEALAND



NEW ZEALAND  
PONY CLUB

# Our Generous Show Hunter Pony Section Sponsors

*Alex & Scott Newland*  
*PJ & DL Amon Contracting*



**WAVERLEY  
HARVESTING**  
Purveyors of Quality Stock Food

**Bruce Clifton Building Services**  
*For all your building requirements*

- New Homes
- Alterations
- Maintenance and Repairs
- Milking Sheds
- Farm Buildings and Sheds
- Roofing
- Concreting

PO Box 19  
Waitotara  
06 346 5529  
027 646 4072  
Email: bruce.judeclifton@xtra.co.nz



**TONY WILSON  
LIVESTOCK LTD**



# Show Hunter Ponies

## 8.30am Start – Main Oval



All classes run under ESNZ Show Hunter Rules 2022  
HIGH POINTS AND HORSE OF THE YEAR QUALIFYING SHOW

Class	E/F	Prize Money
<b>Category A Ponies 133cm &amp; Under – 3.05m (10') stride. Fence height max 70cm</b>		
200	Introductory Pony 60cm	\$8 \$15/\$10/\$5
	<u>Kindly sponsored by Alex &amp; Scott Newland</u>	
201	Cat A HOYQ Pony 70cm	\$8 \$15/\$10/\$5
	<u>Kindly sponsored by Alex &amp; Scott Newland</u>	
202	Vero Insurance Cat A HOYQ Pony High Points 70cm	\$8 \$15/\$10/\$5
	<u>Kindly sponsored by Wilson Livestock</u>	

**Category B Ponies over 133cm, up to and including 143cm – 3.20m (10'6") stride.  
Fence height max 80cm**

205	Introductory Pony 70cm	\$8 \$15/\$10/\$5
	<u>Kindly sponsored by Total Transport</u>	
206	Cat B HOYQ Pony 80cm	\$8 \$15/\$10/\$5
	<u>Kindly sponsored by Waverley Harvesting Limited</u>	
207	Fiber Fresh CAT B HOYQ Pony High Points 80cm	\$8 \$15/\$10/\$5
	<u>Kindly sponsored by PJ &amp; DL Amon Contracting Limited</u>	

**Not before 1.00pm**

**Category C Ponies over 143cm, up to and including 148cm – 3.35m (11') stride.  
Fence height max 1.00m**

210	Introductory Pony 80cm	\$8 \$15/\$10/\$5
	<u>Kindly sponsored by Galaxy Equine NZ</u>	
211	Cat C HOYQ Pony 90cm	\$8 \$15/\$10/\$5
	<u>Kindly sponsored by Bruce Clifton Building Services</u>	
212	Aniwell CAT C HOYQ Pony High Points 90cm	\$8 \$15/\$10/\$5
	<u>Kindly sponsored by Hawken Contracting Limited</u>	

**Classes will be run back to back where possible**

**No** Horse of the Year Qualifying Points will be awarded on the following classes:  
200, 205, 210.

**Championship to be awarded to highest score over all  
3 Categories of High Points Series Classes.**

# Our Generous Show Hunter Horse Section Sponsors

*Tony Sisson—AIM*

*Agricultural & Maintenance Services*



**CEAT NZ LTD**  
**Fenella Grigsby**  
 DC PGradDip(AnimalChiro)  
 PGradDipHealthSciences(MSMX)  
 CertMST(Human) CertVetNursing  
 GCC(UK) Registered

**0210 483432**  
[animalchiropractic.co.nz](http://animalchiropractic.co.nz)

**WOW™**  
 SADDLES



# TONY WILSON LIVESTOCK LTD



# Show Hunter Horses

## To follow Ponies – Main Oval



All classes run under ESNZ Show Hunter Rules 2022  
HIGH POINTS AND HORSE OF THE YEAR QUALIFYING SHOW

Class		E/F	Prize Money
100	Introductory Horse 70cm <u>Kindly sponsored by Waverley Motors</u>	\$8	\$15/\$10/\$5
101	Introductory Horse 80cm <u>Kindly sponsored by Wilson Livestock</u>	\$8	\$15/\$10/\$5
102	Introductory Horse 90cm <u>Kindly sponsored by Wilson Livestock</u>	\$8	\$15/\$10/\$5
103	Horse 1m <b>HOYQ</b> <u>Kindly sponsored by AIM (Agricultural &amp; Industrial Maintenance)</u>	\$9	\$20/\$15/\$6
104	Sport Horse <b>HOYQ</b> Junior High Points 1m <u>Kindly sponsored by AIM (Agricultural &amp; Industrial Maintenance)</u>	\$9	\$20/\$15/\$6
105	<b>Carousel Equestrian</b> Amateur High Points 1m <u>Kindly sponsored by Cotswold Equine &amp; Animal Therapies NZ Limited (CEAT), Fenella Grigsby</u>	\$9	\$20/\$15/\$6
106	<b>NRM Open Horse</b> <b>HOYQ</b> High Points 1.10m <u>Kindly sponsored by Wilson Livestock</u>	\$12	\$30/\$20/\$10

**Classes will be run back to back**

**No** Horse of the Year Qualifying Points will be awarded on the following classes:

100, 101, 102.

**Champion & Borthwick Cups judged over Classes 103, 104, 105 & 106**



Some of our fantastic sponsors to look out for on Tuesday

See Kim from Proactive Equine Sports Therapy at the FMG/ Farmlands Tent



Providing Equine Sports Massage to Whanganui, Manawatu, Wellington and Taranaki regions.

Contact Kim on 027 21 22 400  
or Email [proactiveequinenz@gmail.com](mailto:proactiveequinenz@gmail.com)



PROACTIVE EQUINE SPORTS THERAPY

*Put a Star in your stable*



**GALAXY EQUINE NZ**



*Gold Fever CC*

Galaxy Spring Fever x Golden Daydream RE (Golden Strike)  
EMH14.14.2

Available to a very limited number of mares - \$1200 Natural Serve

**Galaxy Spring Fever Gold Fever CC**

Both Stallions are standing at stud at

Galaxy Equine NZ  
Maxwell Whanganui

Facebook  
Galaxy Equine NZ

Email  
[galaxyequine@gmail.com](mailto:galaxyequine@gmail.com)

**GALAXY EQUINE NZ**



*Galaxy Spring Fever*

Galaxy Pourewa x Spring Brooke  
147cm Performance Pony  
\$1500 LFG & our 10 year Life Guarantee

# EQUESTRIAN COUNTRY



**EST. 2021**

## EQUESTRIAN COUNTRY



*For your boutique equestrian rider and horse purchases*

shop@equestriancountry.co.nz  
[www.equestriancountry.co.nz](http://www.equestriancountry.co.nz)



**TONY WILSON  
LIVESTOCK LTD**

Independent Livestock Agent

**For all livestock  
requirements**

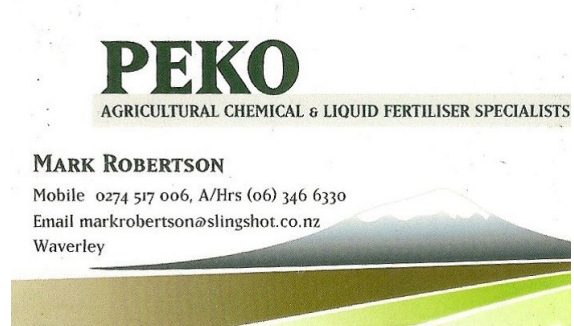
- Tony Wilson  
Ph. 06 346 5900  
Mobile 0274 442 064
- Brent McAree, Dairy Agent  
Ph. 06 346 5697  
Mobile 0274 455 029
- Don Newland  
Mobile 0272 424 878

# Our Generous Show Jumping Ring One Sponsors

*Peter Hackett—Farrier*

*Isaac Lupton & Joanne Moss*

*Ann & Harvey Wilson*



MARK ROBERTSON

Mobile 0274 517 006, A/Hrs (06) 346 6330

Email [markrobertson@slingshot.co.nz](mailto:markrobertson@slingshot.co.nz)

Waverley

Grangewilliam  
STUD

*The natural way to winning.*

FOREST 360

GROWING YOUR FUTURE

# Show Jumping – Ring One



## 9.00am Start – Main Oval

### ALL CLASSES IN ORDER DRAWN

Class		E/F	Prize Money
300	Horse 1.00m Art 238.1.1 A1	\$10	In kind to value \$100
	<u>Kindly sponsored by Wazza Pope – Farmlands Co-operative</u>		
301	Horse 1.05m Art 238.2.1 A2	\$12	\$60/40/20/10
	<u>Kindly sponsored by Wazza Pope – Farmlands Co-operative</u>		
302	“Special Conditions Rising Star”		
	Horse 1.10m Art 238.2.2 AM5	\$15	\$100/40/20/10
	Horses are to have had no more than 3 wins at 1.10m or above, excluding any horse age group classes.		
	<u>Kindly sponsored by Peter Hackett Farrier</u>		

### Start Approx 1 pm

303	Taranaki Equestrian Jumping Pony Points Series		
	Pony 1.00m Art 238.2.2 AM5	\$10	\$60/40/20/10
	<u>Kindly sponsored by Grangewilliam Stud</u>		

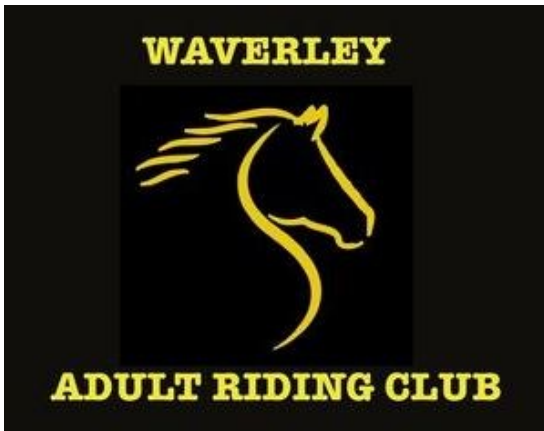
**Taranaki Equestrian Jumping Pony Points Prize** (kindly sponsored by Egmont Horse Coaches) in conjunction with Taranaki Equestrian Jumping and the John Henry Cup (presented by the Atkinson Family) to the leading Taranaki Rider.

Will operate over the following shows: Waverley A&P, Egmont A&P, Stratford A&P and concludes at the Taranaki Equestrian Jumping World Cup Final in Hawera, January 2023.

Leader Ribbon won today must be presented at the Taranaki Equestrian Jumping Points Series class in Hawera this weekend.

304	Pony 1.10m Art 238.2.2 AM5	\$10	\$60/40/20/10
	<u>Kindly sponsored by Peko Contracting 2010 Limited</u>		
305	Horse 1.15m Art 238.2.2 AM5	\$10	\$60/40/20/10
	<u>Kindly sponsored by Isaac Lupton &amp; Joanne Moss</u>		
306	“Forest360 Horse Classic”		
	Horse 1.20m Art 238.2.2 AM5	\$25	\$200/60/40/20
	<u>Kindly sponsored by Forest360</u>		
307	Horse 1.25m Art 238.2.2 AM5	\$15	\$100/60/40/20
	<b>Trophy – Coombe Cup</b>		
	<u>Kindly sponsored by Ann &amp; Harvey Wilson</u>		

## Our Generous Ring Two Show Jumping Sponsors



*Trainco  
Michael & Sally  
Train*



# Show Jumping – Ring Two

## 9.00am Start – Show Paddock



**ALL CLASSES BLACKBOARD DRAWN**

Class	E/F	Prize Money
400 Horse 70cm Art 238.1.1 A1 Introductory Class <u>Kindly sponsored by Waverley Adult Riding Club</u>	\$9	Ribbons Only
401 Horse 80cm Art 238.1.1 A1 Introductory Class <u>Kindly sponsored by Summit Electrical Services Ltd, Todd Cowan</u>	\$9	Ribbons Only
402 Horse 90cm Art 238.1.1 A1 Introductory Class <u>Kindly sponsored by Mark Nicholas, Rural and Lifestyle Sales</u>	\$9	Ribbons Only
403 Horse 1.00m Art 238.2.1 A2 <u>Kindly sponsored by Cutting Edge 2010 Ltd</u>	\$10	\$20/15/10/5
<b><u>1.00pm to 1.30pm – Practice Rounds – Pay at the Gate – Ponies Only</u></b>		
Start at 30cm	\$3	No Ribbons
<b>Not before 1.30pm</b>		
404 Pony 70cm Art 238.1.1 A1 <u>Kindly sponsored by Michael &amp; Sally Train, Trainco</u>	\$8	Ribbons Only
405 Pony 80cm Art 238.1.1 A1 <u>Kindly sponsored by Michael &amp; Sally Train, Trainco</u>	\$8	Ribbons Only
406 Pony 90cm Max Art 238.2.1 A2 <u>Kindly sponsored by Cutting Edge 2010 Limited</u>	\$9	\$15/10/7/5



## 2022 Waverley & Egmont Shows Team Event

### Eligible Sections:

- ◆ Working Hunter Pony, Working Hunter Horse,
- ◆ Show Pony, Saddle Hunter Pony,
- ◆ Riding Horse, Large Hack, Small Hack, Saddle Hunter Horse,
- ◆ Pleasure Horse, Pleasure Pony,
- ◆ Lead Rein, First Ridden,
- ◆ Led Youngstock & Rider Classes



Supreme Champion Award = 50 Points

Champion = 30 Points

Reserve Champion = 25 Points

1<sup>st</sup> Placing = 20 Points

2<sup>nd</sup> Placing = 10 Points

3<sup>rd</sup> Placing = 5 Points

Entry is \$15 Per Team of Three

(Team member is considered a horse rider combination)

Contact Helena McLeod before the 17<sup>th</sup> of November  
for a Results Card and to pay the Team Entry Fee.

Email: [Hufalena@gmail.com](mailto:Hufalena@gmail.com) or Phone 022 019 8471

# Working Hunter Over 148cm

Not before 1.00pm – Lance/McAree Paddock

Kindly sponsored by Moore Markhams

SECTION IS A QUALIFIER FOR HORSE OF THE YEAR 2023

Entry Fee – \$8 per class

Prize Money – \$20/15/10

## RULES:

1. Winners failing to produce their RAS Certificate when requested by the steward forfeit their awards on the day.
2. Working hunters are required to demonstrate jumping ability and be of good strong conformation with good manners, sound paces and be a comfortable ride over long distances.
3. They will be required to jump a minimum of three (3) hunter type fences. Jumping style and ability
4. 40%, conformation 30%, paces and manners 30%.
5. Horses will be required to gallop within the confines and constraints of the venue involved.
6. No boots or bandages permitted.
7. The Waverley A&P Assn reserve the right to combine classes or not pay out money should there be
8. less than 4 entries.
9. The A&P Assn reserve the right to make changes/alterations to the program as required.

- 700 Novice Working Hunter Horse, 0–5 wins, max height 90cm
- 701 Open Working Hunter Horse, over 148cm and not exceeding 158cm, max height 90cm
- 702 Open Working Hunter Horse, over 158cm and not exceeding 163cm, max height 1.10m
- 703 Open Working Hunter Horse, over 163cm, max height 1.10m

**Champion and Reserve Champion Working Hunter Horse**

**To be judged from the winners of classes 701 to 703**

**Second placed horse to the Champion to be judged alongside**

**the remaining winners for Reserve Champion**

**Trophy – K Lupton Cup**

- 706 Novice Adult Rider over fences, 21 years and over, 0–5 wins
- 707 Best Rider over fences, 17 years and under 21 years
- 708 Best Rider over fences, 21 years and over



**MOORE** Markhams



# Working Hunter Ponies

## To follow Horses – Lance/McAree Paddock

Kindly sponsored by Waihau Stables, John & Jacqui Boon

**SECTION IS A QUALIFIER FOR HORSE OF THE YEAR 2023**

Entry Fee – \$8 per class

Prize Money – \$20/15/10

### **RULES:**

1. RAS Height Certificates must be carried in the ring by all competitors and winners failing to produce their RAS Certificate when requested by the steward forfeit their awards on the day.
2. Working hunter ponies are required to demonstrate jumping ability and be of good strong conformation with good manners, sound paces and be a comfortable ride over long distances.
3. They will be required to jump a minimum of three (3) hunter type fences. Jumping style and ability
4. 40%, conformation 30%, paces and manners 30%.
5. Ponies will be required to gallop within the confines and constraints of the venue involved.
6. No boots or bandages permitted.
7. The Waverley A&P Assn reserve the right to combine classes should there be less than 4 entries.
8. Ponies to be up to and including 148cm.
9. All riders must be under 17 years of age excluding Novice classes as at 1st August 2022.
10. All novice pony classes are open to riders of any age.
11. The A&P Assn reserve the right to make changes/alterations to the program as required.

- 600 Novice Working Hunter Pony not exceeding 138 cm,  
0–5 wins, max height 85cm
- 601 Novice Working Hunter Pony over 138 cm & not exceeding 148cm,  
0–5 wins, max height 1.00m
- 602 Open Working Hunter Pony, not exceeding 138cm, max height 85cm
- 603 Open Working Hunter Pony, over 138cm and not exceeding 148cm,  
max height 1.00m

### **Champion and Reserve Champion Working Hunter Pony**

**To be judged from the winners of classes 602 to 603**

**Second placed pony to the Champion to be judged alongside  
the remaining winners for Reserve Champion**

- 606 Best Rider over fences, 14 years and under
- 607 Best Rider over fences, 15 and 16 years

# Junior Rider

**ALL RINGS 8.30am – Lance/McAree Paddock**

**PONIES SHOULD BE PRESENTED IN APPROPRIATE MANNER**

## **RULES:**

1. 16 years and under lead rein on a very quiet older horse acceptable.  
To be led around ring outside of smaller ponies.
2. **Ponies competing in Show Ponies and Saddle Hunter Ponies on Saturday 19<sup>th</sup> November 2022 are NOT eligible. Show Jumping and Show Hunter Ponies are NOT eligible for jumping classes here.**
3. Your judge reserves the right to reject your entry if either the rider or horse/pony gear is considered to be unsuitable or inappropriate. There is some flexibility for entrants in this section.
4. Judge has discretion to move riders between the rings.
5. Ribbons to 6<sup>th</sup> place in all Recreational Rings.

## **800**

## **16 Years and under – LEAD**

**Kindly sponsored by Waverley Horse Gear, C&P Rebay  
BLUE RING ONE**

**Entry Fee – \$20 blanket fee**

**Prize Money – \$10/8/5**

**Care and Attention**

**Trophy – Wanganui Farm Supplies**

**Best Walk**

**Best Trot**

**Best Learner**

**Best Pony Club Mount**

**Champion and Reserve Champion Recreational Junior Rider LEAD**

**To be judged from the winners of classes 802 to 805.**

**Second place getters to stand by.**

**Rider 16 years and under LEAD – Class 1 (split will be decided on the day)**

**Rider 16 years and under LEAD – Class 2 (split will be decided on the day)**

**Best Local Rider**

**Local meaning living between Okehu South and Manawapou River North**

# Junior Rider

**ALL RINGS 8.30am – Lance/McAree Paddock**

**811 16 Years and under – RIDDEN no cantering**

Kindly sponsored by Waverley 4 Square  
YELLOW RING TWO

Entry Fee – \$20 blanket fee

Prize Money – \$10/8/5

Care and Attention

Trophy – Wanganui Farm Supplies

Best Walk

Best Trot

Best Learner

Best Pony Club Mount

Champion and Reserve Champion Recreational RIDDEN (no cantering)

To be judged from the winners of classes 813 to 816.

Second place getters to stand by.

Rider 16 years and under RIDDEN – Class 1 (split will be decided on the day)

Rider 16 years and under RIDDEN – Class 2 (split will be decided on the day)

Best Local Rider

Local meaning living between Okehu South and Manawapou River North

Low Pony Jump RIDDEN ONLY

**FOR ALL YOUR GROCERY NEEDS**

- Fresh Fruit & Vege
- Daily Baked goods
- Fresh sandwiches & coffee
- Hot food to go
- Beer & Wine

**4 FOUR SQUARE WAVERLEY**

# Junior Rider

**ALL RINGS 8.30am – Lance/McAree Paddock**

**900**

**16 Years and under – RIDDEN**

**Must be able to Canter in a Group**

Kindly sponsored by Waverley Carlyle Pony Club

**GREEN RING THREE**

Entry Fee – \$20 blanket fee

Prize Money – \$10/8/5

Care and Attention

Trophy – Wanganui Farm Supplies

Best Walk

Best Trot

Best Pony Club Mount

Best Combination

**Champion and Reserve Champion Recreational RIDDEN**

**To be judged from the winners of classes 902 to 905**

**Second place getters to stand by.**

Best Paced and Mannered

Best Rider – Class 1 (split will be decided on the day)

Best Rider – Class 2 (split will be decided on the day)

Best Local Rider

Low Pony Jump 50cm

Low Pony Jump 70cm

The Waverley A&P Association thanks the Lance and McAree Families for allowing the use of their land for the Recreational Junior Riders



Goodie Bags for the Junior Rider Classes have been generously donated by Amanda and Daniel McAree

## Thank you again to our generous Show, Class and Section Sponsors

### Show Hunter Horses

- ◇ Waverley Motors
- ◇ Wilson Livestock
- ◇ Tony Sisson— AIM (Agricultural and Maintenance Services)
- ◇ Fenella Grigsby—CEAT NZ

### Show Hunter Ponies

- ◇ Alex & Scott Newland—Kawa Farms
- ◇ Wilson Livestock
- ◇ Total Transport
- ◇ Waverley Harvesting
- ◇ PJ & DL Amon Contracting
- ◇ Galaxy Equine NZ
- ◇ Bruce Clifton Building Services
- ◇ Hawken Contracting

### Show Jumping Ring One

- ◇ Wazza Pope—Farmlands Co-operative
- ◇ Peter Hackett Farrier
- ◇ Grangewilliam Stud
- ◇ Peko Contracting
- ◇ Isaac Lupton & Joanne Moss
- ◇ Forest360
- ◇ Ann & Harvey Wilson

### Show Jumping Ring Two

- ◇ Waverley Adult Riding Club
- ◇ Summit Electrical
- ◇ Mark Nicholas
- ◇ Cutting Edge 2010 Limited
- ◇ Michael & Sally Train—Trainco

### Working Hunter Horses

- ◇ Moore Markhams

### Working Hunter Ponies

- ◇ John & Jacqui Boon—Waihau Stables

### Recreational Junior

- ◇ Wanganui Farm Supplies
- ◇ C & P Rebay—Waverley Horse Gear
- ◇ Waverley Four Square
- ◇ Waverley Carlyle Pony Club
- ◇ Amanda & Daniel McAree





# CHANGE the REIN

**Own your journey -  
be proud to be here**

**Make sure your unicorns are happy**

**Give newcomers a leg up**

**Rein in Rubbish behaviour**

**Be a good person**

---

And remember none of us can do this sport  
without our amazing volunteers and officials so  
give them a great big smile and thank them!

---

**#changetherein**



**EQUESTRIAN SPORTS  
NEW ZEALAND**



## Emergency Contact List

A&P Chairperson:	Leeanne Morrison	027 324 0294
Wanganui Hospital:		06 348 1234
Local Vets :	TVC - Patea Wanganui Vet Services Eltham Vet Services	06 273 8678 06 349 0486 06 764 8196
A&P Secretary:	Janene Pope	027 453 5196
South Taranaki District Council:		06 278 0555
H&S Contact:	Leeanne Morrison	027 324 0294
First Aid:	Janene Pope	027 453 5196
Equestrian Contact:	Brenda Simson	027 231 2001

**First Aid Station - Peak Safety located next to the Oval**

**\*\* There will be NO ON CALL FARRIER on site \*\***

### Payment Options:

Poli via EvoEvents

DC to our account - Waverley A&P Association  
**01 0795 0004936 01**

Please note the new account number

Name and entry reference please on all DC payments

### Horse Section Secretary—Brenda Simson E. [bdsimson@farmside.co.nz](mailto:bdsimson@farmside.co.nz)

Email - [waverleyshow@outlook.com](mailto:waverleyshow@outlook.com)

Website - <https://www.sporty.co.nz/waverleyshow>

Facebook - Waverley A & P Association

Equestrian Section Waverley A&P Show

Show Secretary - Janene Pope - 027 453 5196

c/- 300 Parahaki Road, RD1

Waverley 4591

**Waverley A&P Association ~ 2022 Celebrating 100 Annual Shows**

# Waverley A&P Association

# 100<sup>th</sup>



## Annual Show



TUESDAY

# 15

NOV '22

GATES  
OPEN

# 9

am

# GRAND PARADE

# 11.45

HOME INDUSTRIES  
EQUESTRIAN  
DOG TRIALS  
TRADE EXHIBITS  
TRADE LAMBS  
KIDS AG CLUB  
KIDS FUN ZONE  
CLYDESDALES  
CLASSIC CARS AND  
VINTAGE MACHINERY  
**AND MUCH MORE**

## FREE ADMISSION

***See you there to celebrate***  
100 SHOWS – 1909 TO 2022

Dallison Park, Chester Street,  
Waverley



Waverley A & P Association  
E: [waverleyshow@outlook.com](mailto:waverleyshow@outlook.com)  
[www.sporty.co.nz/waverleyshow](http://www.sporty.co.nz/waverleyshow)

