

120th



HELENSVILLE SHOW

Saturday
25th February
2023



2023 Schedule - EQUESTRIAN

Ph: 09 420 7572 | 021 529 689

Email: info@helensvilleshow.co.nz

www.helensvilleshow.co.nz

 facebook.com/HelensvilleShow

 **AUCKLAND CRANES**

BARFOOT & THOMPSON
CONCRETE

 **VETS NORTH**



120th Helensville Show Sponsors

■ SUPREME CHAMPION SPONSORS



■ CHAMPION SPONSORS



■ RED RIBBON SPONSORS

Butch Pet Foods, Christine Smith Family, Dash Website Design, Farmlands, Gourmet Transport, J Wilson Builders, PaperPlus Helensville & Lotto, PGG Wrightson, Physio Flex, Raines Homewares, Wilson Hellaby

■ BLUE RIBBON SPONSORS

Cova Girls, Dunstan Feeds, Kaipara Mapu-I-Musika-Therapy Fale, Laser Electrical Helensville, Laser Plumbing Silverdale, NZ Standardbred Breeders' Association, Rural Women NZ, The Hunting Lodge

■ YELLOW RIBBON SPONSORS

Aitkenhead Family, Cherie McRobbie, Hilary Bott, Helensville News, Claire Madden, Country Women's Institute, John Smith, Megan Glasson, NZ Pinto Society Inc, Pony Breeders Society of NZ, Shona Addison, The Picture Framing Co Kumeū, Welsh Pony and Cob Society of NZ

■ BUSINESS SUPPORTERS

Advanced Dairy and Pump, Dash Design, Helensville News, KA Grasscare, Kaipara Coast Plant Centre





HELENSVILLE SHOW

EQUESTRIAN SCHEDULE

Chief Horse Steward - Angela Lemmen ph 021 529689

Chief Measuring Stewards - Graeme Bradly ph 09 420 8632 or Rick Croft ph 0274920345

Show Manager - Shona Addison ph 021 529 689

Show Entries - Cathryn Loveday ph 021 858 511

Showgrounds phone - 09 420 7572

Postal Address - PO Box 23, Helensville 0840

Email - info@helensvilleshow.co.nz

Website - www.helensvilleshow.co.nz

Address - Helensville Showgrounds, 63 Railway Street, Helensville

Postal Address - PO Box 23, Helensville 0840

CONDITIONS OF ENTRY:

Entries Open 1 January 2023

Entries Close 4pm Wednesday 15 February 2023

THERE WILL BE NO LATE ENTRIES

Last alterations by 4pm Friday 17 February 2023 (in writing, see Confirmation of Entries below)

Substitutions by 5pm Tuesday 21 February 2023 (in writing, see Substitutions below)

Completion of Entry Forms

- Entries must be made on the official entry forms, signed and accompanied by full payment, and be received by the Show Manager on or before the advertised closing date.
- Incomplete, incorrect or unsigned entry forms will be returned to competitors for correction. This applies to all competitors, including members of the Association that have not as yet paid their annual subscription but who have calculated entry fees using the discount available to members.
- Final Helensville measuring day Sunday 12th February 2023. There will be no special measures for Helensville Show entries after this date.
- All entries must be made in the name of the bona-fide owner of the exhibits ("the competitor"), and such exhibits must have been the property of the competitor at the time of entry. Registered lessees of animals are permitted to enter under their own name.

Confirmation of Entries

- Confirmation of entries - A confirmation of entries showing all details of your entries will be returned to competitor following data processing. Your entry form will NOT be returned to you.
- Responsibility - It will be the competitor's responsibility, to check the details on the confirmation of entries carefully and ensure that all details are correct. Any alterations to classes must be made to the Secretary by Friday 17 February 2023 in writing (email). NO EXCEPTIONS - saving Novice upgrading changes - see Conditions & Regulations of the Equestrian Section - Classification.

Substitutions

Substitutions must be advised in writing (email) by 5pm Tuesday 21 February 2023 Substitutions will only be accepted for the same number of entries already entered. No additional entries will be accepted.

Refund of Entry Fee

Competitors desiring a refund of entry fees must apply in writing enclosing a veterinarian's or doctor's certificate within SEVEN DAYS of the Show. Such applications will be considered by the committee, and if successful, refund will be made less 25%.

Competitor Entry Passes

Will be issued according to the following schedule - Horses – 2 passes per horse to a maximum of 4.

Competitor Number

Competitors must supply their own competitor number, which may be worn on the breastplate, arm or back. The competitor number is shown on the confirmation of entries which will be emailed to you at the completion of data processing.

Membership

- Annual individual membership of the Helensville A&P Assn is \$30. Year is 1 June - 31st May.
- Children of members up to the age of 16 years are eligible to claim entry fee discount.
- New Members - Discounted membership entry fees are available to current members of the Helensville A&P Assn. The Association's membership form may be completed and forwarded with entries. A membership application form is at the back of this schedule.

Local

Local owner or local competitor is defined as resident within the area of the Kumeu subdivision of the Auckland Council.

Exhibiting

- Competitors will be called only twice to the ring at which time they will be automatically scratched.
- All scratchings must be advised to the Steward as soon as possible.

Health of Animal

The Helensville A&P Association shall not be responsible for any loss or damage caused (inter alia) through disease or infection however arising. Each competitor shall have deemed to have guaranteed to the Helensville A&P Association and have given warranty that each exhibit entered and brought to the Showgrounds is free of any contagious or infectious disease.

Clean Sport

- The use of tranquillizers, stimulants, or any drugs capable of affecting the performance of horses and ponies is forbidden.
- Competitors are advised that tests for forbidden substances may be carried out during the Show and that testing of all animals is at the owner's risk. Clean Sport Testing will be carried out under the Royal Agricultural Society (Incorporated) Clean Sport Judicial Committee (CSJC) procedures and rules.
- Your signature on the entry form and/or participation in competition denotes acceptance of these conditions. (Ref. Rule 89CS of RAS Equestrian Competitors and Judges Rule Book).

"Yellow Card" System

- This Show supports the RAS "Yellow Card" system, which will operate in the Equestrian Section of all RAS affiliated Shows and will be offered for any inappropriate behaviour towards Show officials, judges, fellow competitors or any other third party connected with the Show bringing the equestrian discipline into disrepute, or cases which are of a less serious nature to the above in accordance with the conduct of members, owners, lessees, competitors and/or competitors as provided in the RAS Equestrian Competitors and Judges Rule Book and rule 13 of the RAS Constitution.
- Implementation of the "Yellow Card" will be in accordance of the RAS Rules that accompany the card. The full working of the "Yellow Card" system is available to view on the RAS website.

Safety Helmets

- All riders, including harness drivers, with the exclusion of heavy horse (Clydesdale) working classes, competing at RAS affiliated A&P Shows must wear protective headgear, which includes a retaining harness secured to the shell at more than two points. Such headgear must work with the chinstrap properly adjusted and fastened when in the arena or ring, the practice area, collecting rings or anywhere else within the Showgrounds or the grounds of an affiliated event.
- Hats/helmets must conform to one of the current approved safety standards. These standards may be subject to change, but the latest list can be found at www.ras.org.nz/equestrian. RAS will advise any changes via their website and Facebook. All hats/helmets that conform must be identified by the current tag system implemented by NZPCA, ESNZ and RAS. Please note - as from 1st August 2023 there are new Standards, where a 'yellow' tag must be shown - <https://www.ras.org.nz/equestrian/health-and-safety/>

Whisker and Inner Ear Trimming

Rule as from 1 January 2022 - <https://www.ras.org.nz/equestrian/whisker-and-inner-ear-trimming/>

Equestrian Rule Book

The RAS Equestrian Rule Book is available online at

<https://www.ras.org.nz/wp-content/uploads/2019/08/RAS-Rulebook-2019-FULL.pdf>

or you can purchase a hard copy through RAS at

<https://www.ras.org.nz/wp-content/uploads/2021/07/RAS-Products-Order-Form-1-1.pdf>

Classifications

- Novice – A novice horse, pony or rider is one that has yet to win six classes in any division within the competitions provided at any A&P Show. Upon achieving the sixth win in a division, a pony, horse or rider must then compete in the appropriate open classes within that division.
- Open – All horses, ponies and riders that have won six classes within a designated section (as above). All may enter in open classes.

Height Certificates

- Original current RAS height certificates must be carried on the day of competition and produced on request. You will not be permitted to enter the ring on Show day without presenting your original current RAS height certificate to the Steward.
- Measuring is available at the following Showgrounds:
Helensville A&P - phone the office 09 420 8632 or 021 529689
Final Helensville measuring day is Sunday, 12th February 2023. There will be no special measures for Helensville Show entries after this date.
Franklin A&P Association - 09 238 8773
Whangarei A&P Association - 09 438 3109

Championships

In all rings, first prize winners only to parade for Champion. Once the Champion has been selected the second placed horse to the Champion MUST be allowed to parade for the judging of the Reserve Champion.

Prize Money

All prizes are subject to confirmation from sponsors.

Points Value

The points for prizes are as follows:

- First Prize - 6 points
- Second Prize - 4 points
- Third Prize - 2 points
- Highly Commended - 1 point
- Champion - 2 points
- Reserve Champion - 1 point

In the event of a tie, the largest number of first prizes will decide the matter, and if that fails to decide, then the value of the prize will be divided equally amongst those who have tied.

Privacy Act

The Association holds records of names and addresses of all members and competitors and may publish these for the purposes of Show, media reports, or promotional purposes at the Association's discretion. The Association may take photographs and video images of members, competitors, exhibits (including livestock) and the employees, agents and assistants of any competitor, and use this information for reporting or promotional purposes in any media at the Association's discretion.

Rights of the Helensville A&P Committee

The Helensville A&P Committee reserves the right to, at any time, for any reason, and without notice (i) refuse or cancel any entry; (ii) alter the Show timetable; (iii) withdraw or change any event or class; (iv) request the removal from the Showgrounds of animals deemed unruly or dangerous, and (v) remove any dangerous or inappropriate exhibit or display.

Protests

- All protests must be in writing and may be lodged with the Secretary within one hour of the completion of the class judged, together with a deposit of \$50 which shall be returned should the protest be sustained. Should the protest be lodged before the judges proceed to their duties, the onus of proof will rest with the competitor; thereafter, the onus of proof will be with the party protesting. No protest will be received later than one hour after the prize tickets/ribbons are affixed.
- The Helensville A&P Committee, or not less than three members thereof, will determine the results of all protests as soon as practicable. There shall be no appeal.

Health & Safety

- The Association will not be responsible for any accident, loss or damage that may be caused to or suffered by an exhibit, or which may be caused directly or indirectly by any other exhibit, notwithstanding any alleged negligence on the part of any officer or servant of the Association, and it shall be a condition of entry that each competitor shall hold the Association indemnified against any claim in respect of any such accident, loss or damage caused by any exhibit of such competitors. By signing the entry form declaration, competitors accept the Association's conditions of entry and indemnify the Association under the provisions of the Health and Safety at Work Act 2015.

- Each competitor must supervise and control their animals at all times and shall be liable for any hazards created or accidents, illness or damage caused by the action of themselves or their animals at the Showgrounds.
- Competitors must comply with the appropriate animal legislation and the Health and Safety at Work Act 2015.
- The Association reserves the right to order immediate removal from the Showgrounds any animal it considers unruly or dangerous.
- It is the Association's policy to see that all due care is taken to protect property and to protect and to keep in efficient order its own property, and to make provision for the protection of the property of others, but the Association shall not be liable to any person in case of loss or damage by reason of any defect, accident, negligence or neglect howsoever arising.
- Persons occupying grandstands, buildings, other structures or other seating accommodation on the Showgrounds do so at their own risk, and no claim shall be made against the Association in respect of any loss, or injury by reason of any defect of accident, or by reason of any act or omission whether negligent or otherwise, on the part of the Association or of any employee or agent of the Association or on the part of any other person.

Parking

Parking is entirely at the owner's own risk. Any vehicles parked will be on this condition and the Association accepts no responsibility for any loss, theft, injury or damage attributed to any negligence on the part of the Association, its employees or Stewards.

EQUESTRIAN SECTION DETAILS - SEE MAP ON BACK INSIDE COVER				
Section	Ring	Start Time	Judge	Sponsor
MORNING RINGS:				
Hack & Park Hack (HOY)	1	8.30am	John Fleet	VETS NORTH Helensville District Racing Club
Saddle Hunter/Riding Horse (HOY) Hectors Farm Hack about 12.15pm	2	8.30am	Stephanie Gowing	BARFOOT & THOMPSON Aitkenhead Family
Pony ring (HOY)	6	8.30am	Gaylene Stanaway	BURMESTER REALTY Paper Plus Select Helensville
Miniature Horse	3	9am	Tina Portanger	HARCOURTS THE DIFFERENCE
Standardbred Horse (HOY)	7	9am	Dana Adams	Laser Plumbing Silverdale NZ Standardbred Breeders Assn Claire Madden Livamol
Pinto Horse & Gypsy Cob (HOY)	8	9am	Gerald Birdsall	VETS NORTH NZ Pinto Horse Society
Registered Welsh	4	9am	Sara Ball	Welsh Pony & Cob Society NZ
AFTERNOON RINGS:				
Pleasure Horse & Pony (HOY)	2	1pm	Dana Adams	FARMLANDS HELENSVILLE
Lead Rein & First Ridden (HOY)	5	1pm	Stephanie Gowing	Paper Plus Select Helensville
Led Pony	4	1pm	Gerald Birdsall	Laser Plumbing Silverdale
Sport Horse	8	1pm	John Fleet	FONTERRA FARM SOURCE
Waitemata Hunt	1	1pm	<i>Supply own</i>	

Vets North HACK & SMALL HACK
HOY Qualifier
Ring 1 – starts at 8.30am

Horses entered in this section must be shown in their current recorded height group and classes. This is the responsibility of the competitor and must be checked on the confirmation of entries. Any errors found on Show day will not be rectified. Horses must hold a current height certificate issued by an official RAS Measuring Steward at an official RAS measuring stand. All height certificates will be checked on the day.

Judge - John Fleet

Entry fee Members - \$7 per class

Non-Members - \$10 per class

Prizes 1st \$15, 2nd \$10, 3rd \$8 (unless otherwise stated)

Hack & Small Hack classes have been kindly sponsored by the following:

- *Vets North, Helensville District Racing Club, Livamol.*

Prize packs in addition to prize money have been kindly sponsored by Vets North.

- Hacks & Small Hacks shall be over 148cm.

GENERAL

Class 1 Best Presented - Hack or Small Hack, rider & equipment

Class 2 Novice Small Hack to 158cm, 0 - 2 wins

Class 3 Novice Small Hack to 158cm, 0 - 5 wins

Class 4 Novice Hack over 158cm, 0 - 2 wins

Class 5 Novice Hack over 158cm, 0 - 5 wins

Champion Novice Small Hack

To be judged from 1st placed in classes 2-3.

Second placed to stand by.

Reserve Champion Novice Small Hack

To be judged from Classes 2 and 3.

Second placed Novice Small Hack to the Champion to be judged alongside the remaining winner for Reserve Champion.

Champion Novice Hack

To be judged from 1st placed in classes 4-5.

Second placed to stand by.

Reserve Champion Novice Hack

To be judged from Classes 4 and 5.

Second placed Novice Large Hack to the Champion to be judged alongside the remaining winner for Reserve Champion.

Class 6 Novice Paced & Mannered Small Hack, 0 - 5 wins

Class 7 Novice Paced & Mannered Hack, 0 - 5 wins

Class 8 Open Small Hack, over 148cm & not exceeding 153cm

Class 9 Open Small Hack, over 153cm & not exceeding 158cm

Class 10 Open Lady's Hack on type, over 148cm & not exceeding 158cm

Conformation class - Lady or Gentleman Rider.

Class 11 Open Gentleman's Hack on type, over 148cm & not exceeding 158cm

Conformation class - Lady or Gentleman Rider.

Class 12 Open Hack, over 158cm & not exceeding 163cm

Class 13 Open Hack, over 163cm

Class 14 Open Lady's Hack, over 158cm on type

Conformation class - Lady or a Gentleman Rider.

Class 15 Open Gentleman's Hack, over 158cm on type

Conformation class - Lady or Gentleman Rider.

Champion Open Small Hack

To be judged from 1st placed in classes 8-11.

Second placed to stand by.

Reserve Champion Open Small Hack

To be judged from Classes 8 - 11.

Second placed Open Small Hack to the Champion to be judged alongside the remaining winners for Reserve Champion.

Champion Open Hack

To be judged from 1st placed in classes 12-15.

Second placed to stand by.

Reserve Champion Open Hack

To be judged from Classes 12 - 15.

Second placed Open Large Hack to the Champion to be judged alongside the remaining winners for Reserve Champion.

Supreme Champion Hack Walker & Hall Cup - \$200

Ring 1, after Hack and Riding Horse/Saddle Hunter rings have been completed

Helensville District Racing Club Supreme Champion Hack - \$200 prize money and special sash to be awarded.

To be judged from Champion Novice Hack & Small Hack, Champion Novice Saddle Hunter & Riding Horse, Champion Open Hack, Champion Open Small Hack, Champion Saddle Hunter & Champion Riding Horse.

Class 16 Open Paced & Mannered Small Hack, over 148cm & not exceeding 158cm

Class 17 Open Paced & Mannered Large Hack, over 158cm

Champion Paced & Mannered Small Hack and Hack

To be judged from 1st place in classes 6, 7, 16 & 17.

Second placed to stand by.

Reserve Champion Paced and Mannered Small Hack and Hack

To be judged from Classes 6, 7, 16 & 17.

Second placed Paced & Mannered Small Hack or Hack to the Champion to be judged alongside the remaining winners for Reserve Champion.

Class 18 Novice Rider, 17 years & over, 0 - 5 wins

Class 19 Youth or Girl Rider, 17 years & under 21 years

Class 20 Rider, 21 years & over

Champion Adult Rider

To be judged from 1st placed in classes 18-20.
Second placed to stand by.

Reserve Champion Adult Rider

To be judged from Classes 18 - 20. Second placed Rider to the Champion to be judged alongside the remaining winners for Reserve Champion.

Class 21 Livamol RAS Ridden Thoroughbred Show Horse - over 148cm

Ring 1 – starting after Hack classes have finished, approx.. 11.45am – noon

LIVAMOL RAS THOROUGHBRED SHOWHORSE SERIES

- Ribbons to 4th place.
- Placings 1st to 4th will accumulate points that will result in an overall series winner. Series will conclude at HOY2023.
- Proof of registration in a recognised Thoroughbred Stud Book or Register will be required.
- Annual registration is required to enter the series through RAS Head Office or at www.ras.org.nz/equestriansection/Livamol
- Each RAS (Accepted) Registered Thoroughbred will receive an RAS Registration number. This number is to be entered on the A&P Show's entry form (or online). If no number is entered, entry will be deemed invalid and no points will be allocated.
- To be registered as a Thoroughbred possessing true Thoroughbred qualities.
- Judging is 80% conformation and 20% paces & manners.
- Judges to assess each horse individually with saddles removed, after they have been assessed ridden.
- Horses to show a good walk, as well as gallop, room permitting.



VETS NORTH



Barfoot & Thompson SADDLE HUNTER & RIDING HORSE

HOY Qualifier

Ring 2 – starts at 8.30am

Horses entered in this section must be shown in their current recorded height group and classes. This is the responsibility of the competitor and must be checked on the confirmation of entries. Any errors found on Show day will not be rectified. Horses must hold a current height certificate issued by an official RAS Measuring Steward at an official RAS measuring stand. All height certificates will be checked on the day.

Judge - Stephanie Gowing

Entry fee Members - \$7 per class

Non-Members - \$10 per class

Prizes - 1st \$15, 2nd \$10, 3rd \$8 (unless otherwise stated)

Saddle Hunter & Riding Horse classes have been kindly sponsored by:

Barfoot & Thompson

- Saddle Hunters and Riding Horses shall be over 148cm.
- Saddle Hunters and Riding Horses may also enter classes 18-21.

GENERAL

Class 22 Best Presented - Saddle Hunter or Riding Horse & Equipment

Class 23 Novice Saddle Hunter, 0-2 Wins

Class 24 Novice Riding Horse, 0-2 Wins

Class 25 Novice Saddle Hunter, 0-5 Wins

Class 26 Novice Riding Horse, 0-5 Wins

Champion Novice Riding Horse

To be judged from 1st placed in classes 24 & 26.

Second placed to stand by.

Reserve Champion Novice Riding Horse

To be judged from Classes 24 & 26.

Second placed to the Champion to be judged alongside the remaining winners for Reserve Champion.

Champion Novice Saddle Hunter

To be judged from 1st placed in classes 23 & 25.

Second placed to stand by.

Reserve Champion Novice Saddle Hunter

To be judged from Classes 23 & 25.

Second placed to the Champion to be judged alongside the remaining winners for Reserve Champion.

Class 27 Open Saddle Hunter, over 148cm & not exceeding 163cm

Class 28 Open Riding Horse, over 148cm, not exceeding 163cm

Class 29 Open Saddle Hunter, over 163cm

Class 30 Open Riding Horse, over 163cm

Class 31 Open Lady's Riding Horse on type

Conformation class - Lady or Gentleman Rider

Class 32 Open Gentleman's Riding Horse on type

Conformation class - Lady or Gentleman Rider.

Class 33 Open Lady's Saddle Hunter on type

Conformation class - Lady or Gentleman Rider.

Class 34 Open Gentleman's Saddle Hunter on type

Conformation class - Lady or Gentleman Rider.

Champion Riding Horse

To be judged from 1st placed in classes 28,30-32.

Second placed to stand by.

Reserve Champion Riding Horse

To be judged from Classes 28, 30, 31, 32.

Second placed to the Champion to be judged alongside the remaining winners for Reserve Champion.

Champion Saddle Hunter – Barfoot & Thompson Cup

To be judged from 1st placed in classes 27,29, 33-34.

Second placed to stand by.

Reserve Champion Saddle Hunter

To be judged from Classes 27, 29, 33, 34.

Second placed to the Champion to be judged alongside the remaining winners for Reserve Champion.

Proud sponsors of the Helensville Show 2023
Saddle Hunter & Riding Horse HOY Qualifier

BARFOOT & THOMPSON

LICENSED REAA 2008

And proudly introducing the
Barfoot & Thompson
Champion Saddle Hunter Cup



Class 35 Novice Paced & Mannered Saddle Hunter, 0-5 Wins

Class 36 Novice Paced & Mannered Riding Horse, 0-5 Wins

Class 37 Open Paced & Mannered Saddle Hunter

Class 38 Open Paced & Mannered Riding Horse

Champion Paced & Mannered Saddle Hunter & Riding Horse

To be judged from 1st placed in classes 35-38.

Second placed to stand by.

Reserve Champion Paced&Mannered Saddle Hunter & Riding Horse

To be judged from Classes 35 - 38.

Second placed to the Champion to be judged alongside the remaining winners for Reserve Champion.

Class 39 Hector's Farmer's Horse or Pony

Ring 2 - Starting at approx. 12 noon

Hector Aitkenhead Memorial Cup & Rosette

1st \$100 and rosette, 2nd \$15, 3rd \$10

For the rider and horse or pony showing the most ability in a practical test, suitable for a farm stock horse or pony. Open to all entrants except First Ridden.

BARFOOT & THOMPSON

LICENSED REAA 2008

**Burmester Realty PONY
HOY Qualifier
Ring 6 – starts at 8.30am**

Ponies entered in this section must be shown in their current recorded height group and classes. This is the responsibility of the competitor and must be checked on the confirmation of entries. Any errors found on Show day will not be rectified. Ponies must hold a current height certificate issued by an official RAS Measuring Steward at an official RAS measuring stand. All height certificates will be checked on the day.

Judge - Gaylene Stanaway

Entry fee Members - \$7 per class

Non-Members - \$10 per class

Prizes - 1st \$15, 2nd \$10, 3rd \$8 (unless otherwise stated)

Pony classes have been kindly sponsored by the following:

Burmester Realty, Paper Plus Select Helensville.

- Ponies 148cm and under.
- A pony may only be entered in the pony section OR the saddle hunter pony section, **NOT** both.
- Jump heights measure 70cm with a maximum of 85cm for ponies up to 138cm.
- Jump heights measure 76cm with a maximum of 85cm for ponies up to 148cm.

Rider Classes

Class 40 Best Presented Pony, Rider and Gear, 148cm & under

Class 41 Best Novice Junior Rider, 0 - 5 wins

Class 42 Best Rider, 11yrs & under

H A Lurman Cup

Class 43 Best Rider, 12 - 14 years

1st place to also receive a prize pack sponsored by Paper Plus Select Helensville.

Class 44 Best Rider, 15 & 16 years

Champion Junior Rider

To be judged from 1st placed in classes 41 - 44.

Second placed to stand by.

Reserve Champion Junior Rider

To be judged from Classes 41 - 44.

Second placed Junior Rider to the Champion to be judged alongside the remaining winners for Reserve Champion.



**BURMESTER
REALTY** LICENSED
UNDER THE
REAA 2008

0800 18 88 80 / www.burmester.co.nz

WHY PAY MORE?
2.90%
Commission rate to \$500,000
then 2% thereafter + GST

**FREE MARKETING
FREE APPRAISAL**

Show and Saddle Hunter Pony Classes

Class 45 Novice Show Pony, 0-2 wins, not exceeding 128cm

Class 46 Novice Show Pony, 0-5 wins, not exceeding 128cm

Champion Novice Show Pony not exceeding 128cm

To be judged from 1st placed in classes 45-46.

Second placed to stand by.

Reserve Champion Novice Show Pony not exceeding 128cm

To be judged from Classes 45 - 46.

Second placed to the Champion to be judged alongside the remaining winner for Reserve Champion.

Class 47 Novice Show Pony, 0-2 wins, over 128cm and not exceeding 138cm

Class 48 Novice Show Pony, 0-5 wins, over 128cm and not exceeding 138cm

Champion Novice Show Pony over 128cm, not exceeding 138cm

To be judged from 1st placed in classes 47-48.

Second placed to stand by.

Reserve Champion Novice Show Pony over 128cm, not exceeding 138cm

To be judged from Classes 47 - 48.

Second placed to the Champion to be judged alongside the remaining winner for Reserve Champion.

Class 49 Novice Show Pony, 0 - 2 wins, over 138cm, not exceeding 148cm

Class 50 Novice Show Pony, 0 - 5 wins, over 138cm, not exceeding 148cm

Champion Novice Show Pony over 138cm, not exceeding 148cm

To be judged from 1st placed in classes 49 - 50.

Second placed to stand by.

Reserve Champion Novice Show Pony over 138cm, not exceeding 148cm

To be judged from Classes 49 - 50.

Second placed to the Champion to be judged alongside the remaining winner for Reserve Champion.

Class 51 Novice Saddle Hunter Pony, 0-2 wins, not exceeding 128cm

Class 52 Novice Saddle Hunter Pony, 0-5 wins, not exceeding 128cm

Champion Novice Saddle Hunter Pony not exceeding 128cm

To be judged from 1st placed in classes 51 - 52.

Second placed to stand by.

Reserve Champion Novice Saddle Hunter Pony not exceeding 128cm

To be judged from Classes 51 - 52.

Second placed to the Champion to be judged alongside the remaining winner for Reserve Champion.

Class 53 Novice Saddle Hunter Pony, 0 - 2 wins, over 128 not exceeding 138cm

Class 54 Novice Saddle Hunter Pony, 0 - 5 wins, o/128cm not exceeding 138cm

Champion Novice Saddle Hunter Pony over 128cm, not exceeding 138cm

To be judged from 1st placed in classes 53 - 54.

Second placed to stand by.

Reserve Champion Novice Saddle Hunter Pony over 128cm not exceeding 138cm

To be judged from Classes 53 - 54.

Second placed to the Champion to be judged alongside the remaining winner for Reserve Champion.

Class 55 Novice Saddle Hunter Pony, 0 - 2 wins, over 138cm, not exceeding 148cm

Class 56 Novice Saddle Hunter Pony, 0 - 5 wins, over 138cm, not exceeding 148cm

Champion Novice Saddle Hunter Pony over 138cm, not exceeding 148cm

To be judged from 1st placed in classes 55 - 56.

Second placed to stand by.

Reserve Champion Novice Saddle Hunter Pony over 138cm, not exceeding 148cm

To be judged from Classes 55 - 56.

Second placed to the Champion to be judged alongside the remaining winner for Reserve Champion.

Class 57 Open Show Pony, not exceeding 128cm

Class 58 Open Show Pony, over 128cm & not exceeding 138cm

Champion Show Pony not exceeding 138cm

To be judged from 1st placed in classes 57 - 58.

Second placed to stand by.

Reserve Champion Show Pony not exceeding 138cm

To be judged from Classes 57 - 58.

Second placed to the Champion to be judged alongside the remaining winner for Reserve Champion.

Class 59 Open Show Pony, over 138cm & not exceeding 143cm

Class 60 Open Show Pony, over 143cm and not exceeding 148cm

Champion Show Pony over 138cm, not exceeding 148cm

To be judged from 1st placed in classes 59 - 60.

Second placed to stand by.

Reserve Champion Show Pony over 138cm, not exceeding 148cm

To be judged from Classes 59 – 60.

Second placed to the Champion to be judged alongside the remaining winner for Reserve Champion

Class 61 Open Saddle Hunter Pony, not exceeding 128cm

Class 62 Open Saddle Hunter Pony, over 128cm & not exceeding 138cm

Champion Saddle Hunter Pony not exceeding 138 cm

To be judged from 1st placed in classes 61 - 62.

Second placed to stand by.

Reserve Champion Saddle Hunter Pony not exceeding 138 cm

To be judged from Classes 61 - 62.

Second placed to the Champion to be judged alongside the remaining winner for Reserve Champion.

Class 63 Open Saddle Hunter Pony, over 138cm & not exceeding 143cm

Class 64 Open Saddle Hunter Pony, over 143cm and not exceeding 148cm

Champion Saddle Hunter Pony over 138cm, not exceeding 148cm

To be judged from 1st placed in classes 63 - 64.

Second placed to stand by.

Reserve Champion Saddle Hunter Pony over 138cm, not exceeding 148cm

To be judged from Classes 63 - 64.

Second placed to the Champion to be judged alongside the remaining winner for Reserve Champion.

Class 65 Novice Paced and Mannered Show Pony, 0 - 5 wins

Class 66 Novice Paced and Mannered Saddle Hunter Pony, 0 - 5 wins

Class 67 Open Paced and Mannered Show Pony

Class 68 Open Paced and Mannered Saddle Hunter Pony

Champion Paced & Mannered Show Pony & Saddle Hunter Pony

To be judged from 1st placed in classes 65 - 68.

Second placed to stand by.

Reserve Champ Paced & Mannered Show Pony & Saddle Hunter Pony

To be judged from Classes 65 - 68.

Second placed to the Champion to be judged alongside the remaining winner for Reserve Champion.

Supreme Champion Pony NW Rimmer Memorial Cup - \$50

To be judged from all Show and Saddle Hunter Pony Open Champions.

Supreme Champion to receive \$50

Class 69 The Pony Breeders Society of New Zealand Inc Rider Sash

- Entries must be registered with Pony Breeders Society of NZ (Inc), be 148cm or under and have been foaled in New Zealand. Ponies must be ridden by a rider under the age of 17 years.
- Registered Saddle Hunter Ponies are eligible to enter this class.
- Entries are to be fully registered with the Pony Breeders Society of NZ (Inc), and the registration number of the pony is to be shown on the entry form. Registration certificate to be carried on the day. If it is subsequently found that the winner of a Pony Breeder's Society sash is not registered with the Society, they will be required to forfeit this award. Non-Championship class.

Pony Hunter Jumping Classes

- All ponies should be in their height ring for these classes.

Class 70 Novice Pony Hunter over fences, 0 - 5 wins, not exceeding 138cm

Class 71 Novice Pony Hunter over fences, 0-5 wins, over 138cm, not exceeding 148cm

Class 72 Open Pony Hunter, over fences, not exceeding 138cm

Class 73 Open Pony Hunter, over fences, over 138cm & not exceeding 148cm

Champion Pony Hunter

To be judged from 1st placed in classes 72 - 73.

Second place to stand by.

Reserve Champion Pony Hunter

To be judged from Classes 72 - 73.

Second placed to the Champion to be judged alongside the remaining winner for Reserve Champion.

Class 74 Best Rider, over fences, 14 years & under

Kelly Cup

Class 75 Best Rider, over fences, 15 & 16 years

Class 76 Best Bareback Rider, over fences, 12 years & under

Class 77 Best Bareback Rider, over fences, 13 - 16 years

Class 78 Harold Cliff Memorial Hunter

Entry fee - Members \$20, Non-Members \$25

Prizes 1st \$100, 2nd \$75, 3rd \$50

Harold Cliff Memorial Hunter - all ponies together, to include wire jump.

**LET US
SHOW YOU
WHAT WE'RE
MADE OF...**



**BURMESTER
REALTY** LICENSED
UNDER THE
REAA 2008

0800 18 88 80 / www.burmester.co.nz

WHY PAY MORE?
2.90%
Commission rate to \$500,000
then 2% thereafter + GST

**FREE MARKETING
FREE APPRAISAL**

Harcourts the Difference MINIATURE HORSE

Ring 3 – starts at 9am

Horses entered in this section must be shown in their current recorded height group and classes. This is the responsibility of the competitor and must be checked on the confirmation of entries. Any errors found on Show day will not be rectified. Horses must hold a current height certificate issued by an official RAS Measuring Steward at an official RAS measuring stand. All height certificates will be checked on the day.

Judge - Tina Portanger

Entry fee Members - \$7 per class

Non-Members - \$10 per class

Prizes - 1st \$15, 2nd \$10, 3rd \$8 (unless otherwise stated)

4th will be placed for points only.

Miniature classes have been kindly sponsored by the following:

Harcourts The Difference.

- Miniature horses must be registered with bodies affiliated to the RAS of NZ.
- Registration number and Association must be stated on the entry form.
- Horses or ponies registered with any other breed society are not eligible.
- The Miniature Horse Section will be run in accordance with NZMHA Show Rules.
- All colts and stallions, regardless of age, must wear a Stallion Identification Badge. No persons under the age of 16 to handle a Stallion, other than a current season's foal.
- Youth age is taken as at 1st January 2021 - Youth must be 17 years or under.
- If you have less than 6 wins you are eligible to compete in Novice Classes.

Youth

Class 79 Best Presented Horse & Youth Handler 17 years & under

Category A - 86.5cm & Under

Class 80 Best Presented Horse & Handler Cat A

Class 81 Foal/Weanling Filly, Colt or Gelding

Class 82 Yearling Filly, Colt or Gelding

Champion Youngstock Miniature Category A

To be judged from 1st placed in classes 81-82.

Second placed to stand by.

Reserve Champion Youngstock Miniature Category A

To be judged from Classes 81 - 82.

Second placed to the Champion to be judged alongside the remaining winner for Reserve Champion.

Class 83 Two-year-old Filly, Colt or Gelding

Class 84 Three-year-old Filly, Colt or Gelding

Champion 2-3 yo Miniature Category A

To be judged from 1st placed in classes 83 - 84.
Second placed to stand by.

Reserve Champion 2-3 yo Miniature Category A

To be judged from Classes 83 - 84.
Second placed to the Champion to be judged alongside the remaining winner for Reserve Champion.

Class 85 Mare 4 years and over**Class 86 Gelding 4 years and over****Class 87 Stallion 4 years and over****Champion Adult Miniature Category A**

To be judged from 1st placed in classes 85 - 87.
Second placed to stand by.

Reserve Champion Adult Miniature Category A

To be judged from Classes 85 - 87.
Second placed to the Champion to be judged alongside the remaining winner for Reserve Champion.

Supreme Champion Miniature Horse Category A

To be judged from all Champions Category A.

Class 88 Best Multi Colour Cat A**Class 89 Best Solid Colour Cat A****Class 90 Best Head Male Cat A****Class 91 Best Head Female Cat A****Class 92 Best Movement 1 year and under Cat A****Class 93 Best Movement 2 years and over Cat A****Category B - Over 86.5cm & Not Exceeding 96.5cm****Class 94 Best Presented Horse & Handler Cat B****Class 95 Foal/Weanling Filly, Colt or Gelding****Class 96 Yearling Filly, Colt or Gelding****Champion Youngstock Miniature Category B**

To be judged from 1st placed in classes 95 - 96.
Second placed to stand by.

Reserve Champion Youngstock Miniature Category B

To be judged from Classes 95-96.
Second placed to the Champion to be judged alongside the remaining winner for Reserve Champion.

Class 97 Two-year-old Filly, Colt or Gelding
Class 98 Three-year-old Filly, Colt or Gelding

Champion 2-3 yo Miniature Category B

To be judged from 1st placed in classes 97 - 98.
Second placed to stand by.

Reserve Champion 2-3 yo Miniature Category B

To be judged from Classes 97 - 98.
Second placed to the Champion to be judged alongside the remaining winner for Reserve Champion.

Class 99 Mare 4 years and over

Class 100 Gelding 4 years and over

Class 101 Stallion 4 years & over

Champion Adult Miniature Category B

To be judged from 1st placed in classes 99 - 101.
Second placed to stand by.

Reserve Champion Adult Miniature Category B

To be judged from Classes 99 - 101.
Second placed to the Champion to be judged alongside the remaining winner for Reserve Champion.

Supreme Champion Miniature Horse Category B

To be judged from all Champions Category B.

Class 102 Best Multi Colour Cat B

Class 103 Best Solid Colour Cat B

Class 104 Best Dilute Colour Cat B

Class 105 Best Head Male Cat B

Class 106 Best Head Female Cat B

Class 107 Best Movement 1 year and Under Cat B

Class 108 Best Movement 2 years and over Cat B

Performance Classes Cat A & B
--

Class 109 Youth Hunter - Cat A & B combined

Not eligible for champion or any other jumping class

Class 110 Intro Hunter - Cat A & B combined

Not eligible for champion or any other jumping class

Class 111 Open Hunter 3 years and over Cat A

6 wins or more, novice horses not eligible

Class 112 Novice Hunter 3 years and over Cat A

Less than 6 wins in jumping classes across all miniature horse breed shows.

Class 113 Open Hunter 3 years & over Cat B

6 wins or more, novice horses not eligible

Class 114 Novice Hunter 3 years & over Cat B

Less than 6 wins in jumping classes across all miniature horse breed shows

Champion Miniature Jumper

To be judged from Classes 111 & 113. Second placed to the Champion to be judged alongside the remaining winner for Reserve Champion.

Reserve Champion Miniature Jumper

To be judged from Classes 111 & 113. Second placed to the Champion to be judged alongside the remaining winner for Reserve Champion.

Class 115 Youth Trail Cat A & B combined

Not eligible for champion

Class 116 Intro Trail Cat A & B combined

Not eligible for champion or any other trail class

Class 117 Novice Trail Cat A

Less than 6 wins in Trail across all miniature horse breed shows

Class 118 Open Trail Cat A

6 wins or more, novice horses not eligible

Class 119 Novice Trail Cat B

Less than 6 wins in trail classes across all miniature horse breed shows

Class 120 Open Trail Cat B

6 wins or more, novice horses not eligible



Harcourts The Difference

PROUDLY SPONSORING THE HELENSVILLE A & P SHOW

“WE LOOK FORWARD TO SEEING YOU THERE!”

YOUR
Trusted

LOCAL PROPERTY EXPERTS!

FOR ALL YOUR REAL ESTATE AND PROPERTY MANAGEMENT NEEDS

Harcourts The Difference

helensville.harcourts.co.nz
92 Commercial Road | Helensville | 09 420 7663

The Difference Limited Licensed Agent REAA 2008



STANDARD BRED
HOY Qualifier
Ring 7 – starts at 9am

All entries are the responsibility of the competitor and must be checked on the confirmation of entries. Any errors found on Show day will not be rectified.

- Horses age as at 1st August.
- All Standardbreds must state their NZSBA Showing Passport registration number on entry form. Entries will not be accepted without this.
- NZSBA Showing Passport must be carried at all times and wins are to be recorded on this card only.
- Stewards will check each horse's NZSBA Showing Passport when entering the ring. A strict policy of "no card, no entry" will be in place at shows.
- NZSBA Showing Passports are replacing the Green Performance cards, which are now invalid. All Standardbreds must carry a brand or microchip that is registered with HRNZ.
- Novice horses to be ridden in a snaffle bridle.

Judge - Dana Adams

Entry fee Members - \$7 per class

Non-Members - \$10 per class

Prizes - 1st \$15, 2nd \$10, 3rd \$8 (unless otherwise stated)

Standardbred classes have been kindly sponsored by:

Laser Plumbing Silverdale, New Zealand Standardbred Breeders Association, Claire Madden, Livamol

In Hand

Class 121 Best Presented Led Standardbred and Handler

Class 122 Best Filly 3 years and under

Class 123 Best Gelding/Colt 3 years and under

Class 124 Best Mare 4 years and over

Class 125 Best Gelding/Stallion 4 years and over

Champion In Hand Standardbred Horse - \$50

To be judged from 1st placed in classes 122 - 125

Second placed to stand by.

Champion to receive \$50, sponsored by Laser Plumbing Silverdale

Reserve Champion In Hand Standardbred Horse

To be judged from Classes 122 - 125.

Second placed to the Champion to be judged alongside the remaining winner for Reserve Champion.

Supreme Champion Standardbred Horse - \$100

Supreme Champion to receive \$100, sponsored by Laser Plumbing Silverdale

Class 126 Best paced Standardbred

Class 127 Best mannered Standardbred

Class 128 Showmanship - Best Handler

Ridden

Class 129 Best Presented Standardbred and Rider

Class 130 Novice Standardbred 0-2 wins at an A&P Show

Class 131 Novice Standardbred 0-5 wins at an A&P Show

Champion Novice Ridden Standardbred Horse - \$50

To be judged from 1st placed in classes 130 - 131.

Second placed to stand by.

Champion to receive \$50, sponsored by Claire Madden.

Reserve Champion Novice Ridden Standardbred Horse

To be judged from Classes 130 - 131.

Second placed to the Champion to be judged alongside the remaining winner for Reserve Champion.

Class 132 Open Ridden Standardbred Horse

Class 133 Ladies Hack Ridden by a Lady or Gentleman

Competitors may only enter in either the lady's or the gentleman's hacks - not both.

Class 134 Gentleman's Hack Ridden by a Lady or Gentleman

Competitors may only enter in either the lady's or the gentleman's hacks - not both.

Champion Open Ridden Standardbred Horse - \$50

To be judged from first placed in classes 132 - 134.

Second placed to stand by.

Champion to receive \$50, sponsored by Laser Plumbing Silverdale

Reserve Champion Open Ridden Standardbred Horse

To be judged from Classes 132 - 134.

Second placed to the Champion to be judged alongside the remaining winner for Reserve Champion.

Supreme Champion Ridden Standardbred Horse - \$100

Supreme Champion to receive \$100, sponsored by NZ Standardbred Breeders Association.

Class 135 Best Paced Standardbred

Class 136 Best Mannered Standardbred

Class 137 Best Rider on the flat

Class 138 Livamol RAS Standardbred Series, over 148cm

First Prize kindly provided by Livamol

LIVAMOL Ridden Standardbred Series

- Judging: 80% confirmation, 20% paces & manners.
- Judges to assess each horse individually with saddles removed after they have been assessed ridden. Horses to show suitability of the breed as a riding horse in life after racing.
- Horses to show a good walk and be required to canter.
- Each competitor to register their HRNZ branded **or microchipped** Standardbred **annually** with NZSBA julie@thebreeders.co.nz (no fee required).
- Each NZSBA (accepted) registered Standardbred will receive a registration number from RAS Head Office and will be entered into the Livamol Standardbred Series.
- Placings 1st to 4th will accumulate points that will result in an overall series winner - series will conclude at HOY2023. Ribbons to 4th place.

**Vets North PINTO & GYPSY COB
HOY Qualifier
Ring 8 – starts at 9am**

Judge – Gerald Birdsall

Entry fee Members - \$7 per class

Non-Members - \$10 per class

Prizes - 1st \$15, 2nd \$10, 3rd \$8 (unless otherwise stated)

Pinto & Gypsy Cob classes have been kindly sponsored by:

Vets North.

Prize packs, in addition to prize money, have been kindly sponsored by Vets North.

In Hand

Class 139 Best Presented Horse & Handler

Class 140 Best Colour & Patterned Pinto

Class 141 Paced & Mannered Pinto

Class 142 Pinto Foal or Yearling

Class 143 Pinto 2 or 3 Year Old

Champion Youngstock Pinto

To be judged from 1st placed in classes 142 - 143.

Second placed to stand by.

Reserve Champion Youngstock Pinto

To be judged from Classes 142 - 143.

Second placed to the Champion to be judged alongside the remaining winner for Reserve Champion.

Class 144 Pinto Pony Under 148cm, 4 years and over

Class 145 Pinto Lightweight/Middleweight Horse 4 years and over

Class 146 Pinto Heavyweight Horse 4 years and over

Champion Adult Pinto

To be judged from 1st placed in classes 144 - 146.

Second placed to stand by.

Reserve Champion Adult Pinto

To be judged from Classes 144 - 146.

Second placed to the Champion to be judged alongside the remaining winner for Reserve Champion.

Supreme Champion Pinto

To be judged from Champion Youngstock and Adult.

Class 147 Best Presented Purebred or Partbred Gypsy Cob

Class 148 Purebred Gypsy Cob 3 years and under

Class 149 Purebred Adult Gypsy Cob 4 years and over

Class 150 Best Paced & Mannered Purebred Gypsy Cob



Champion Purebred Gypsy Cob

To be judged from 1st placed in classes 148 - 149.

Second placed to stand by.

Reserve Champion Purebred Gypsy Cob

To be judged from Classes 148-149.

Second placed to the Champion to be judged alongside the remaining winner for Reserve Champion.

Class 151 Partbred Gypsy Cob 3 years and under**Class 152 Partbred Adult Gypsy Cob, 4 years and over****Class 153 Best Paced & Mannered Partbred Gypsy Cob****Champion Partbred Gypsy Cob**

Judged from 1st placed in classes 151 - 152.

Second placed to stand by.

Reserve Champion Partbred Gypsy Cob

To be judged from Classes 151 - 152.

Second placed to the Champion to be judged alongside the remaining winner for Reserve Champion.

Ridden

Class 154 Best Presented Pinto Horse & Rider**Class 155 Pinto Novice 0-5 wins****Class 807 Pinto Novice Pony 0 – 5 wins****Class 156 Open Pinto****Class 806 Open Pinto Pony, unot exceeding 148cm****Class 157 Best Paced Pinto****Class 158 Best Mannered Pinto****Champion Ridden Pinto**

To be judged from 1st placed in classes 155 - 156.

Second placed to stand by.

Reserve Champion Ridden Pinto

To be judged from Classes 155 - 156. Second placed to the Champion to be judged alongside the remaining winner for Reserve Champion.

Champion Ridden Pinto Pony

To be judged from Classes 806 & 807.

Second placed to stand by.

Reserve Champion Ridden Pinto Pony

To be judged from Classes 806 & 807.

Second placed to the Champion to be judged alongside the remaining winner for Reserve Champion.

Supreme Champion Ridden Pinto

To be judged from Champion Ridden Pinto Pony and Horse.

Class 159 Novice Purebred or Partbred Gypsy Cob 0-5 wins

Class 160 Open Purebred Gypsy Cob

Class 161 Open Partbred Gypsy Cob

Class 162 Best Paced & Mannered Purebred Gypsy Cob

Class 163 Best Paced & Mannered Partbred Gypsy Cob

Champion Ridden Gypsy Cob

To be judged from 1st placed in classes 159 - 161.

Second placed to stand by.

Reserve Champion Ridden Gypsy Cob

To be judged from Classes 159 - 161.

Second placed to the Champion to be judged alongside the remaining winner for Reserve Champion.



0800 VTS NTH

Caring for all your Animals - Large & Small

-  Professional advice on parasite control, alpaca farming & calf rearing
-  Full surgical & hospital facilities including X-Ray / Ultrasound
-  Experience with small blocks, pets & commercial farms
-  Small Block Holders Animal Care Courses
-  Animal Physiotherapy & Rehabilitation
-  On-site Cattery at VN Waimauku
-  Dedicated Equine Vets
-  Puppy Pre-School Classes & Puppy Training
-  Extensive retail product range for both small & large animals
-  Radioactive Iodine Treatment



Small Block Field Day - March 2023

Gain practical hands on animal care & handling skills from a vet.

If you have cattle, sheep, goats or alpaca on your small block our

Field Day is perfect for you!

Spaces Limited - Book Now

0800 VTS NTH After Hours: 0274 957 986

Kumeu / Helensville / Waimauku / Silverdale

www.vetsnorth.co.nz



REGISTERED WELSH CLASSES

Ring 4 – starts at 9am

All entries are the responsibility of the competitor and must be checked on the confirmation of entries.
Any errors found on Show day will not be rectified.
Height certificates are not required to enter this section.

Judge - Sara Ball

Entry fee Members - \$7 per class

Non-Members \$10 per class

Prizes 1st \$15, 2nd \$10, 3rd \$8 (unless otherwise stated)

Welsh & Cob classes have been kindly sponsored by the following:

Welsh Pony & Cob Society of New Zealand.

Schedule of classes as provided by The Welsh Pony & Cob Society of NZ (Inc).

- All entries to be registered with the Welsh Pony & Cob Society of NZ (Inc) in either The Welsh Pony & Cob Society of New Zealand stud book or The Welsh Pony & Cob Society of New Zealand partbred register, or in the case of foals must be eligible for registration. Registration number must be given on the Show entry form and produced on Show day if requested by the Steward, Chief Steward or Judge.
- This schedule caters for all sections (A, B, C/D) and partbred.
- Ponies and cobs must be entered under their fully registered name and registration number.
- Temporary colts 5 years and over are not eligible to be shown.
- Temporary colts are not eligible for gelding classes.
- There is no height restriction in the partbred section of Welsh breed classes and that height certificates are not required for registered purebred and partbred Welsh ponies & cobs in Welsh breed classes.
- Registered Welsh purebreds must not be plaited in in hand classes unless exhibited in ridden classes on that day.
- No class shall be held up awaiting the arrival of ponies from other rings.

Welsh Purebred

Class 164 Best Presented Welsh Pony and Handler -A,B,& C/D

Aranui Kriss Memorial Cup

Class 165 Best Stallion - Section A,B,C, and D - 4 years and over

Class 166 Section A - Brood Mare - 4 years & over

Brood Mare (with foal at foot or visibly in foal) 4 years and over.

Class 167 Section A - Dry Mare or Gelding - 4 years & over

Dry Mare (not to foal in current season) or gelding - 4 years and over

Class 168 Section B - Brood Mare - 4 years & over

Brood mare with foal at foot (or visibly in foal) - 4 years and over

Class 169 Section B - Dry Mare or Gelding - 4 years & over

Dry Mare (not to foal in the current season) or gelding - 4 years and over

Class 170 Section C/D - Brood Mare -4 years & over

Brood Mare (with foal at foot or visibly in foal) - 4 years and over

Class 171 Section C/D - Dry Mare or Gelding - 4 years & over

Dry mare (not to foal in the current season) or gelding - 4 years and over

Champion Purebred Welsh Adult - Aranui Kriss Memorial Cup

To be judged from 1st placed in classes 165 - 171.

Second placed to stand by.

Reserve Champion Purebred Welsh Adult

To be judged from Classes 165 - 171.

Second placed to the Champion to be judged alongside the remaining winners for Reserve Champion.

Class 172 Foal & Yearling - Section A Colt, Filly, Gelding

Class 173 2&3 years - Section A Colt, Filly or Gelding

Class 174 Foal & Yearling - Section B Colt, Filly or Gelding

Class 175 2&3 Years - Section B Colt, Filly or Gelding

Class 176 Foal & Yearling - Section C/D Colt, Filly or Gelding

Class 177 2 & 3 Years - Section C/D Colt, Filly or Gelding

Champion Purebred Welsh Youngstock

To be judged from 1st placed in classes 172 - 177.

Second placed to stand by.

Reserve Champion Purebred Welsh Youngstock

To be judged from Classes 172 - 177.

Second placed to the Champion to be judged alongside the remaining winners for Reserve Champion.

Class 178 Best Welsh Head Purebred

Class 179 Best Movement & Manners Purebred

Welsh Partbred

Class 180 Best Presented Welsh Pony and Handler

Class 181 Best Stallion 4 years and over

Class 182 Best Broodmare

With foal at foot or visibly in foal.

Class 183 Best Dry Mare

Not in foal this current season or gelding - 4 years and over.

Champion Partbred Welsh Adult

To be judged from 1st placed in classes 181-183.

Second placed to stand by.

Reserve Champion Partbred Welsh Adult

To be judged from Classes 181 - 183.

Second placed to the Champion to be judged alongside the remaining winners for Reserve Champion.

Class 184 Best Foal - Colt, Filly or Gelding

Class 185 Best Yearling - Colt, Filly or Gelding

Class 186 2&3 Years - Colt, Filly or Gelding

Champion Partbred Welsh Youngstock

To be judged from 1st placed in classes 184 - 186.

Second placed to stand by

Reserve Champion Partbred Welsh Youngstock

To be judged from Classes 184 - 186.

Second placed to the Champion to be judged alongside the remaining winners for Reserve Champion.

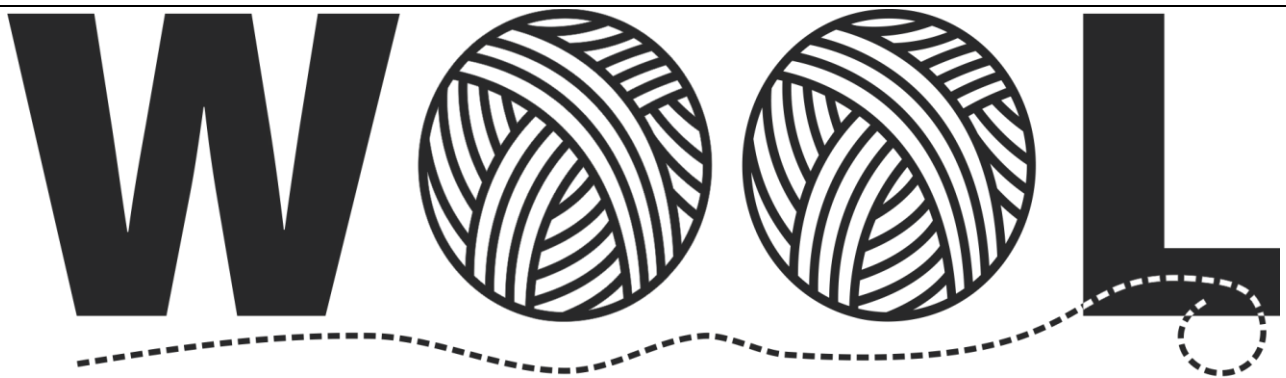
Class 187 Best Welsh Head - partbred

Class 188 Best Movement and Manners - partbred

Supreme Champion Welsh

To be judged from Champion Purebred and Champion Partbred, including Youngstock.

Best Welsh Exhibit receives a rosette sponsored by the Welsh Pony & Cob Society of New Zealand.



NZ's Hero Fibre

Visit our exhibition on Wool, in the Livestock area
See champion blade shearer, Allan Oldfield
Follow the story from sheep to sweater
Go back in time in the old Shearing Shed
See some unusual end uses of Wool, our hero fibre
Catch the Rare Sheep Breed display
Watch our Woolly fashion parade

Find the 10 Where's Woolly cartoons around the grounds and enter the competition!

Farmlands Helensville PLEASURE HORSE & PONY
HOY Qualifier
Ring 2 – starts at 1pm

- Horses / ponies ridden in this ring must not compete in any other ridden section of the show.
- RAS Height Certificates are not required.
- Pleasure Horse / Pony means those animals who do not fit the mould of a Show Horse /Pony. We welcome any breed and colour. They should be an uncomplicated and genuine pleasure to ride. Whilst they do not possess the show quality conformation of a show horse, they should in their own way be a delight to ride, with impeccable manners. A "pleasure" mount: is NOT an inexperienced mount with show quality conformation who is destined for the open show ring.
- Horses / ponies must never have placed first in an open show ring class.
- Ordinary snaffle bit only, no poll action. Only cavesson nosebands are permitted.
- Whips may be carried but must not exceed 76cms in length. Spurs are not to be worn.
- Riders may have competed outside the Pleasure Horse / pony section.
- Riders in pony classes must be under 17yrs (proof of rider's age may be requested). Age is taken as at 1st August.
- Children riding hacks must compete in the Horse Classes. Adults may ride ponies in the Horse Classes without prejudice.
- To qualify for HOY, horses and riders must be registered with NZEPS prior to the date of show with Champion and Reserve Champion placings as qualifiers.
- Please refer to their website for details - nzequestrianpleasure.wordpress.com

Judge - Dana Adams

Entry fee for this section \$30

Ribbons only to 3rd Place

Pleasure horse classes have been kindly sponsored by:
Farmlands Helensville

Pleasure Horse & Pony

- Class 189 Best Presented Horse**
- Class 190 Best Presented Pony**
- Class 191 Best Trotting Horse**
- Class 192 Best Trotting Pony**
- Class 193 Best Horse & Rider Combination**
- Class 194 Best Pony & Rider Combination**
- Class 195 Best Mannered Horse**
- Class 196 Best Mannered Pony**
- Class 197 Best Paced Horse**
- Class 198 Best Paced Pony**

Champion Pleasure Hack

To be judged from 1st place in classes 191, 193, 195, 197.
Second place to stand by.

Reserve Champion Pleasure Hack

To be judged from Classes 191, 193, 195, 197.

Second placed to the Champion to be judged alongside the remaining winners for Reserve Champion.

Champion Pleasure Pony

To be judged from 1st place in classes 192, 194, 196, 198.

Second place to stand by.

Reserve Champion Pleasure Pony

To be judged from Classes 192, 194, 196, 198.

Second placed to the Champion to be judged alongside the remaining winners for Reserve Champion.

Class 199 Best rider 30yrs and under**Class 200 Best rider 31yrs and over****Class 201 Best rider 12yrs and under****Class 202 Best rider 13-16 years****Class 203 Best Trick Horse**

Rider to demonstrate a trick with horse either in hand or ridden.

Class 204 Best Trick Pony

Rider to demonstrate a trick with pony either in hand or ridden.



Farmlands

co-operative

**LEAD REIN & FIRST RIDDEN
HOY Qualifier
Ring 5 – starts at 1pm**

Ponies entered in this section must be shown in their current recorded height group and classes. This is the responsibility of the competitor and must be checked on the confirmation of entries. Any errors found on Show day will not be rectified. Ponies must hold a current height certificate issued by an official RAS Measuring Steward at an official RAS measuring stand. All height certificates will be checked on the day.

Judge Stephanie Gowing

Entry fee Members \$7 per class

Non-Members \$10 per class

Prizes 1st \$15, 2nd \$10, 3rd \$8 (unless otherwise stated)

Lead Rein & First Ridden classes have been kindly sponsored by:

Paper Plus Select Helensville.

- First ridden ponies must be ridden in a snaffle bridle, with a cavesson noseband, a snaffle bit and a single rein. No double bits.
- Lead Rein Ponies not to exceed 128cm. First Ridden Ponies not to exceed 138cm.
- No class will be held up awaiting the arrival of Ponies from any other rings.
- Children 7 years and under, minimum age of 4 years as at 1 August 2020.
- RIDERS - This section is not open to riders entered in any other section of the Show.
- A Lead Rein pony and First Ridden Pony are judged as 60% suitability, temperament, safeness and 40% conformation & paces.
- Ponies to be led by a leader/attendant (14 years and over) with the lead rein attached to the cavesson noseband of a snaffle bridle - refer to Appendix B of the RAS Equestrian Rule Book.
- Ponies will be asked to walk and trot - no cantering under any circumstances.
- Running or bearing reins or similar tackle are not allowed.

Lead Rein

Class 205 Best Presented Lead Rein Pony - Rider & Handler

Class 206 Novice Lead Rein Pony, not exceeding 128cm - 0 - 5 wins

Class 207 Open Lead Rein Pony, not exceeding 123cm

Class 208 Open Lead Rein Pony, over 123cm and not exceeding 128cm

Class 209 Open Paced & Mannered Lead Rein Pony

Class 210 Best Rider

Champion Lead Rein Pony

To be judged from 1st placed in classes 206 - 208.

Second placed to stand by.

Reserve Champion Lead Rein Pony

To be judged from Classes 206 - 208.

Second placed to the Champion to be judged alongside the remaining winners for Reserve Champion.

First Ridden

- First ridden ponies must be ridden in bridle with single rein i.e. pelham with rounding's. Fork reins permissible. No double bits.
- Ponies 138cm and under, 4 years and over as at 1 August 2021.
- Children under 10 years (able to ride off lead but not competing in open pony or rider classes).
- No cantering except for individual workout.
- In this section, the judging criteria is 60% suitability, temperament, safeness and 40% conformation and paces.

Class 211 Best Presented Pony & Rider

Class 212 Novice First Ridden Pony, not exceeding 138cm - 0 - 5 wins

Class 213 Open First Ridden Pony, not exceeding 128cm

Class 214 Open First Ridden Pony, over 128cm & not exceeding 138cm

Champion First Ridden Pony

To be judged from 1st placed in classes 212 - 214.

Second placed to stand by.

Reserve Champion First Ridden Pony

To be judged from Classes 212 - 214.

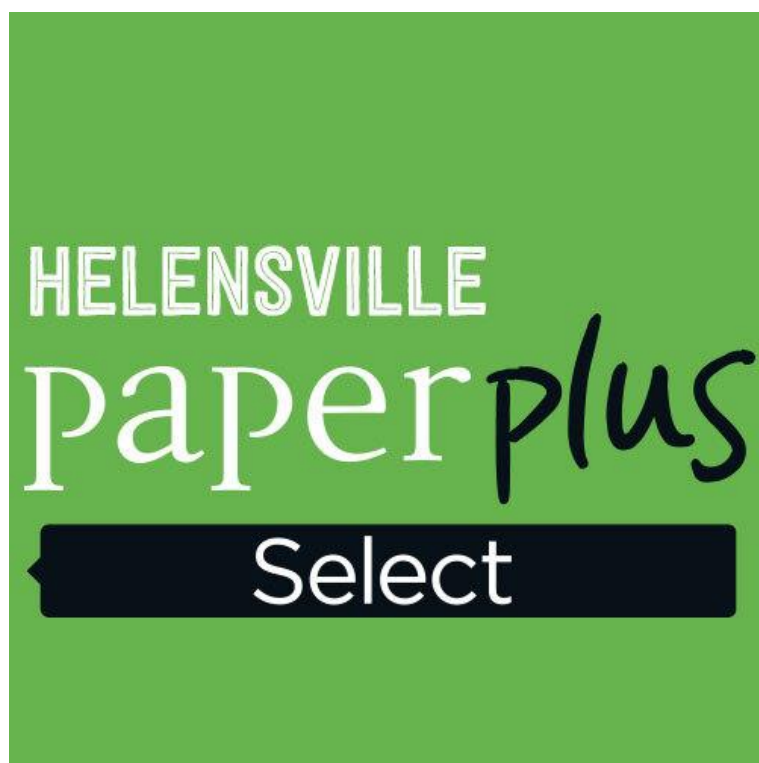
Second placed to the Champion to be judged alongside the remaining winners for Reserve Champion.

Class 215 Novice Paced & Mannered First Ridden Pony, 0 - 5 wins

Class 216 Open Paced & Mannered First Ridden Pony

Class 217 Novice Rider (First Ridden Section), 0 - 5 wins

Class 218 Open Rider (First Ridden Section)



LED PONY

Ring 4 – starts at 1pm

Ponies entered in this section must be shown in their current recorded height group and classes. This is the responsibility of the competitor and must be checked on the confirmation of entries. Any errors found on Show day will not be rectified. Ponies must hold a current height certificate issued by an official RAS Measuring Steward at an official RAS measuring stand. All height certificates will be checked on the day.

Judge Gerald Birdsall

Entry fee Members \$7 per class

Non-Members \$10 per class

Prizes 1st \$15, 2nd \$10, 3rd \$8 (unless otherwise stated)

Led Pony classes have been kindly sponsored by the following:

Laser Plumbing Silverdale, Dunstan Nutrition

- All ponies in this section shall be 148cm & under.
- No class will be held up awaiting the arrival of ponies from other rings.
- Mares shown in brood mare classes must have a foal at foot or present a veterinary certificate of pregnancy that includes a projected foaling date. "Dry" mare is a mare not to foal during the current season (1 August to 31 July).
- Registration certificates to be presented to Stewards before Pony Breeders Society of New Zealand (Inc) sashes are presented.
- Placings will be to 6th place.

General

Class 219 Best Presented Led Pony

Class 220 Best Paced & Mannered Led Pony, 3 years & under

Class 221 Best Paced & Mannered Led Pony, 4 years & over

Class 222 Handler, 17 years & over

Class 223 Young Handler, 16 years & under

Class 224 Best Head

Class 225 Pony Calculated To Make A Child's Show Pony

Riding Pony

Class 226 Pony Stallion, not exceeding 148cm

Class 227 Pony Brood Mare, not exceeding 148cm

Proof to be sent with entry.

Class 228 Dry Mare, 4 years & over, not exceeding 148cm

Class 229 Gelding, 4 years & over, not exceeding 148cm

Champion Adult Led Pony

To be judged from 1st placed in classes 226 - 229.

Second place to stand by.

Champion to receive Dunstan Nutrition voucher

Reserve Champion Adult Led Pony

To be judged from Classes 226 - 229.

Second placed to the Champion to be judged alongside the remaining winners for Reserve Champion.

Class 230 The Pony Breeders Society of NZ Inc Adult Sash

Restricted to stallions and broodmares. No geldings or dry mares in this class. Broodmares to comply with RAS rule 59.

Pony not to exceed 148cm and must be four (4) years and over.

Entries are to be fully registered with the Pony Breeders Society of NZ (Inc) and registration number of the pony to be shown on the entry form. Registration certificate to be carried on the day.

If it is subsequently found that the winner of a Pony Breeders Society sash is not registered with the Society, they will be required to forfeit this award.

Non-Championship class.

Class 231 Pony Foal, either sex

Class 232 Pony Yearling, not exceeding 140cm

Class 233 Pony, 2 years, not exceeding 146cm

Class 234 Pony, 3 years, not exceeding 148cm

Champion Youngstock Led Pony

To be judged from 1st placed in classes 231 - 234.

Second placed to stand by.

Champion to receive Dunstan Nutrition voucher

Reserve Champion Youngstock Led Pony

To be judged from Classes 231 - 234.

Second placed to the Champion to be judged alongside the remaining winners for Reserve Champion.

Supreme Champion Led Pony - \$50

To be judged from Champion Adult & Youngstock Led Ponies

Supreme Champion to receive \$50, sponsored by Laser Plumbing Silverdale

Class 235 The Pony Breeders Society of New Zealand Inc Youngstock Sash

Restricted to yearlings, 2 & 3 year olds, registered with the Society. Foals are not eligible and youngstock not to mature over 148cm. Must have been foaled in New Zealand.

Entries are to be fully registered with the Pony Breeders Society of NZ (Inc), and the registration number of the pony to be shown on the entry form. Registration certificate to be carried on the day. If it is subsequently found that the winner of a Pony Breeders Society sash is not registered with the Society, they will be required to forfeit this award.

Non-Championship class.

Class 236 Progeny Group

2 Progeny of Stallion or Mare. To be named at time of entry.

Class 237 Led Pony, 3 years & under - Most suitable to make a Show Pony

Class 238 Led Pony, 4 years & over - Most suitable to make a Show Pony

Class 239 Led Pony, 3 years & under - Most suitable to make a Saddle Hunter Pony

Class 240 Led Pony, 4 years & over - Most suitable to make a Saddle Hunter Pony

Class 241 Led Pony, 3 years & under - Most suitable to make a Jumping Pony

Class 242 Led Pony, 4 years & over - Most suitable to make a Jumping Pony

Fonterra Farm Source SPORT HORSE

Ring 8 – starts at 1pm

All entries are the responsibility of the competitor and must be checked on the confirmation of entries. Any errors found on Show day will not be rectified. Height certificates are not required to enter this section.

Judge - John Fleet

Entry fee Members - \$7 per class

Non-Members \$10 per class

Prizes 1st \$15, 2nd \$10, 3rd \$8 (unless otherwise stated)

Sport Horse classes have been kindly sponsored by the following:

Fonterra Farm Source

- Sport horse classes are led classes.
- Open to all horses to mature over 148cm. Includes all warmblood breeds, thoroughbred horses and other breeds for leisure riding and competition.
- DEFINITION OF A SPORT HORSE: Horse suitable for FEI disciplines - Show jumping, dressage and eventing.
- Horses do not have to be registered to enter these classes.

General

Class 243 Best Presented Horse & Handler

Class 244 Foal Born After 1 Aug

May be accompanied by mare. Foal is to be led.

Class 245 Yearling Sport Horse, Filly

Class 246 Yearling Sport Horse, Colt or Gelding

Class 247 Two Year Old Sport Horse, Filly

Class 248 Two Year Old Sport Horse, Colt Or Gelding

Class 249 Three Year Old Sport Horse, Filly

Class 250 Three Year Old Sport Horse, Colt Or Gelding

Champion Junior Sport Horse

To be judged from 1st placed in classes 244 - 250.

Second placed to stand by.

Reserve Champion Junior Sport Horse

To be judged from Classes 244 - 250.

Second placed to the Champion to be judged alongside the remaining winners for Reserve Champion.

Class 251 Mare Most Suitable To Breed A Sport Horse

3 years and over in foal or with a foal at foot. Foals at foot must be led.

Class 252 Dry Mare 4 Years & Over, Suitable To Breed

Class 253 Gelding, 4 Years & Over

Class 254 Stallion, 4 Years & Over

Champion Senior Sport Horse

To be judged from 1st placed in classes 251 - 254.

Second placed to stand by.

Reserve Champion Senior Sport Horse

To be judged from Classes 251 - 254.

Second placed to the Champion to be judged alongside the remaining winners for Reserve Champion.

Supreme Champion Sport Horse - \$100

Supreme Champion chosen from Champion Junior and Senior Sport Horses.

Supreme Champion to receive \$100, sponsored by Fonterra Farm Source.

Category Classes

Class 255 Horse, 3 years & under, most suitable for dressage

Class 256 Horse, 3 years & under, most suitable for eventing

Class 257 Horse, 3 years & under, most suitable for show jumping

Class 258 Horse, 3 years & under, most suitable for show hacking

Class 259 Horse, 4 years & over, most suitable for dressage

Class 260 Horse, 4 years & over, most suitable for eventing

Class 261 Horse, 4 years & over, most suitable for show jumping

Class 262 Horse, 4 years & over, most suitable for show hacking



**PROUD
SPONSORS
OF THE
HELENSVILLE
A&P SHOW**

FARM SOURCE HELENSVILLE

9 Commercial Road, Helensville | 09 420 8140

nzfarmsource.co.nz | nzfss.helensville@fonterra.com

Waitemata Hunt JUMPING CHALLENGE
In conjunction with Helensville Show
Ring 1 – starts at 1pm

The Waitemata Hunt jumps are rustic, including brush, gates and natural looking rails. Judging will be based on style, striding, a rolling Hunter pace and faultable rails. These are the same jumps as the Waitemata Hunt District Derby. Entries are capped at 30 riders.

- No height/performance cards required
- Not governed by RAS rules
- No restrictions on bits
- Show/Hunt attire to be worn
- Plaiting preferred, but optional
- Jumps do not exceed 85cm high
- Junior is 17 years and under, Open is 18 to 45 years, Masters is over 45 years



Judge & Stewards - supplied by Waitemata Hunt

Entry fee - \$60 covers all classes

Ribbons to 3rd Place

Eye Opener

Hunter style around the ring with 7 rustic and inviting jumps

Class 263 Eye Opener Junior

Class 264 Eye Opener Open

Class 265 Eye Opener Masters

Waitemata Hunt Handy Hunter

Agility round with 5 rustic jumps

Class 266 Handy Hunter Junior

Class 267 Handy Hunter Open

Class 268 Handy Hunter Masters

Wire & Tape Jump

Class 269 Wire & Tape Jump Junior

Class 270 Wire Jump Open

Class 271 Wire Jump Masters

Helensville Show Challenge

A course of 8 rustic jumps

Class 272 Helensville Challenge Junior

Class 273 Helensville Challenge Open

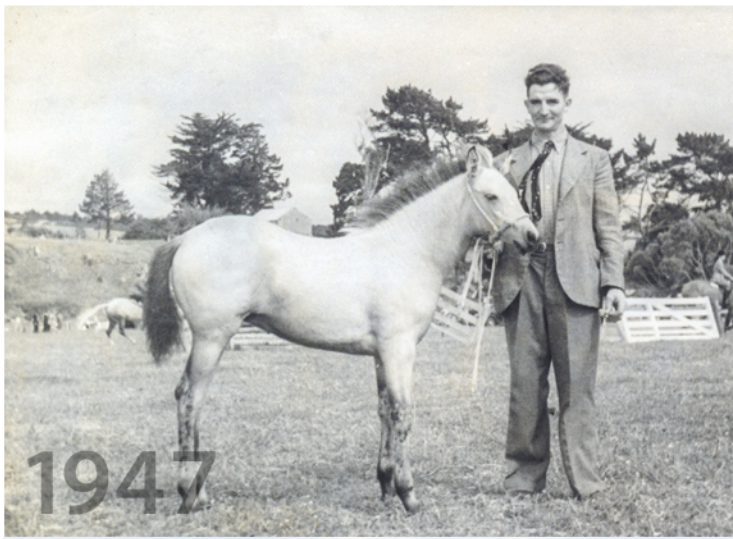
Class 274 Helensville Challenge Masters

THANK YOU...

Our grateful thanks to the many people that help make the Helensville Equestrian area run smoothly on Show day...

- Our Committee, in particular Angela Lemmen and Cathryn Lovejoy, our Chief Equestrian Steward and Entries Manager;
- The Equestrian Tent office team – Sharron King & Cathryn;
- The old-timer Equestrian ring set up team!! – Graeme Bradly & Trevor Holst;
- Equestrian Announcer – Courtney Addison;
- The Horse Measurers, who toil away all year – Graeme Bradly, Rick & Julie Croft, Sharron King, Angela Lemmen, Shona Addison;
- Our wonderful volunteers – many of whom rock up each year and help us on Show day, for the love of it;
- Waitemata Hunt Club for your volunteers and this year their new competition ring;
- Helensville Lions Club, who feed not only our Equestrian volunteers and judges, but indeed all of the volunteers, judges and dignitaries of the show – that's about 120 people. They do a fantastic job, keeping the workers going.
- Our Judges who come from far and wide to spend the day, in all weather, to judge your beautiful animals.
- And finally our faithful sponsors, who sponsor your rings and provide prizes. Without these great businesses the Show would not happen – please support them in return.

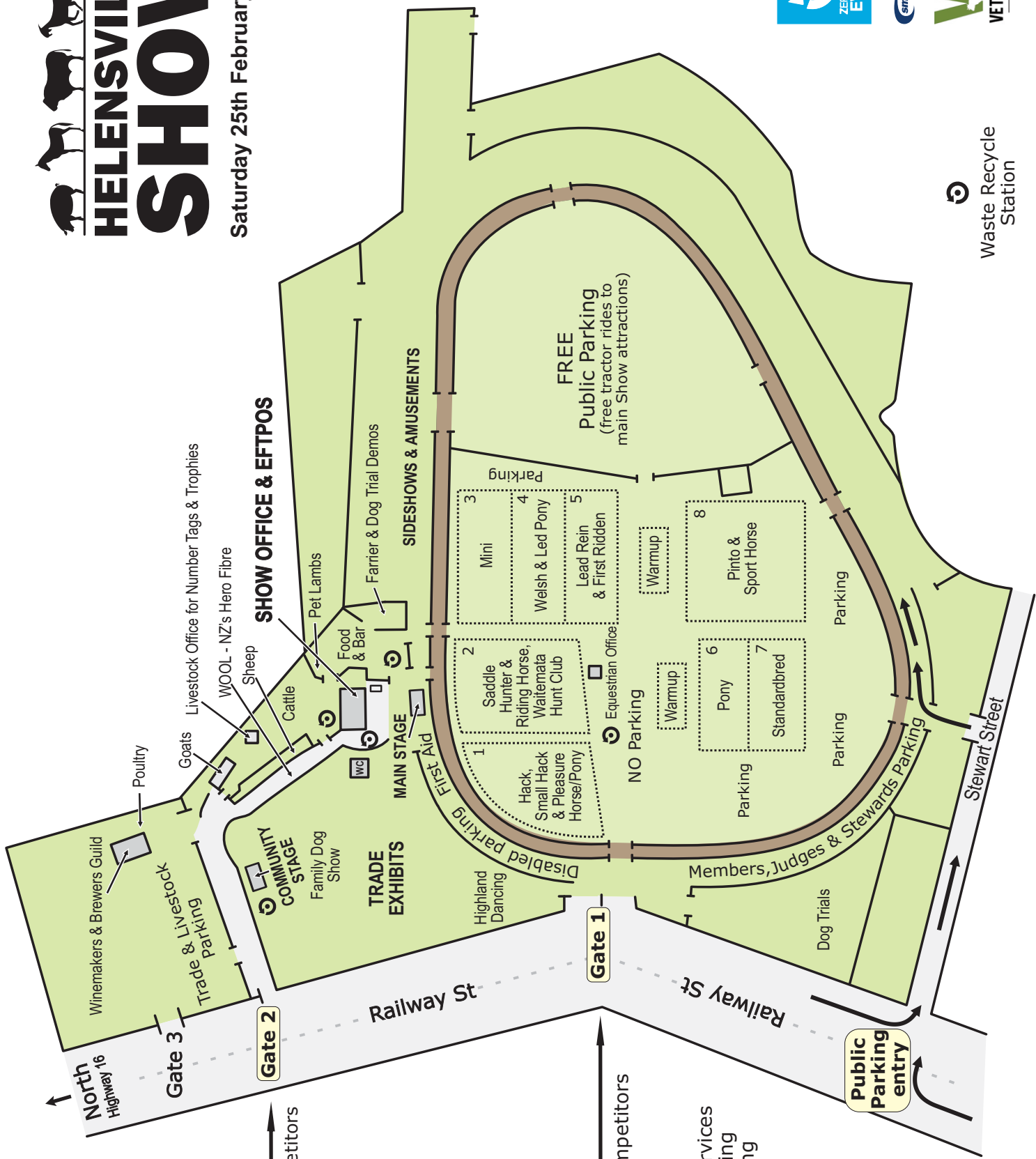
What an impressive community of people who come together to make the Helensville Show what it is. We acknowledge your mahi and thank you for your service – we hope you enjoy the day.





HELENSVILLE SHOW

Saturday 25th February, 2023



- Gate 2**
- Livestock Competitors
 - Trade Exhibitors
 - Entertainment
 - Lions Club

- Gate 1**
- Equestrian Competitors
 - Members
 - Judges
 - Stewards
 - Emergency Services
 - Highland Dancing
 - Disabled Parking
 - Woodchoppers



Waste Recycle Station



0800 VTS NTH

Caring for all your Animals - Large & Small

-  Professional advice on parasite control, alpaca farming & calf rearing
-  Full surgical & hospital facilities including X-Ray / Ultrasound
-  Experience with small blocks, pets & commercial farms
-  Small Block Holders Animal Care Courses
-  Animal Physiotherapy & Rehabilitation
-  On-site Cattery at VN Waimauku
-  Dedicated Equine Vets
-  Puppy Pre-School Classes & Puppy Training
-  Extensive retail product range for both small & large animals
-  Radioactive Iodine Treatment



Small Block Field Day - March 2023

Gain practical hands on animal care & handling skills from a vet.
If you have cattle, sheep, goats or alpaca on your small block our
Field Day is perfect for you!
Spaces Limited - Book Now

0800 VTS NTH After Hours: 0274 957 986

Kumeu / Helensville / Waimauku / Silverdale

www.vetsnorth.co.nz

