

Owned And Operated By The Poverty Bay Agricultural & Pastoral Association - Since 1875



A & P SHOW
GISBORNE 2022
14th-15th October

Equestrian

SCHEDULE



It's where you **NEED** to be!



POVERTY BAY A&P SPRING SHOW



SHOWGROUNDS PARK, GISBORNE

13, 14, 15 OCTOBER 2022

Showgrounds Park & Event Centre

20 Main Road, Makaraka, Gisborne

www.gisbomeshow.co.nz entries@gisbomeshow.co.nz

PO Box 2186, Gisborne 4040. Phone 068686084

Absolutely **NO DOGS** will be permitted on the grounds

At the time of print New Zealand is in Covid-19 Orange Traffic Light system. Should this change, we will adhere to any Government regulations.

**DRESSAGE TO BE HELD ON SUNDAY 9 OCTOBER
IN HAND CLASSES TO BE HELD 4PM WEDNESDAY 12**

JUDGES

Dressage

Mesdames Carol Eivers, Chris Paston, Sharon Goldsworthy (All Hawkes Bay), Sue Harris, Jessie Bourke, Shirley Hyland, Brigid Sherriff, Nicky Hansen and Carleen Hickling.

Jumping

Mesdames Kaye Williams (President of the Ground Jury and Chief Steward), Carol Wawatai (Opotiki), and tbc

Show Hunters

Joan Couper (Rotorua)

Showing

Mesdames Bernice Southy (Masterton), Janice MacDonald (Silverstream), Amanda Parkes (Pukekohe), Mr Alan Windle (Shannon) and tbc.

Carriage Driving

Mesdames Cheryl Robinson (Te Awamutu) and Faye Flintoff (Cambridge)

Tomorrow's Stars

Mesdames Robyn McIldowie and Darylle Lawler

Course Designers

Ring 1 Kevin Hansen (Waikato)

Ring 2 Edward Bullock (Auckland)

Ring 3 Kevin Hansen (Waikato)

Timekeepers

Ring 1 tbc

Announcer

Ring 1 tbc

ENTRIES CLOSE: 27 SEPTEMBER 2022

Late entries will incur a 50% penalty from closing date

Entry fees must be paid at time of entry

ABSOLUTELY NO entries will be accepted after 30 September

SPONSORED FEATURED EVENTS FOR 2022

	Prize pool
★ EVOEVENTS/EAST COAST WOOLS LTD HORSE GRAND PRIX	\$5,000
★ COUNTRY TV PONY GRAND PRIX	\$1,000
★ MATTHEWS HANOVERIANS 7 YEAR OLD	\$900
★ FMG YOUNG RIDER	\$900
★ MAINLAND COACHWORK JUNIOR RIDER	\$900
★ HUNTER JUMPING OPEN HUNTER JUMP	\$500
★ CHRISTINE BEATSON MEMORIAL EQUITATION	\$700
★ SHOWING - BEST PRESENTED COMBINATIONS (10)	Rosette



POVERTY BAY A&P ASSOCIATION THANK OUR LOCAL
SPONSOR OF THESE EVENTS

Covered yards

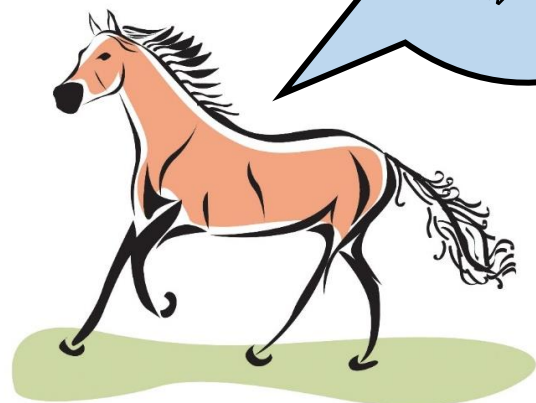
Limited numbers

See stabling next page!

Late entries

- 50% extra
- No covered yards
- No catalogue order

Open yards
\$15 for
Show



POVERTY BAY A&P SHOW RULES, REGULATIONS, CONDITIONS AND INFORMATION

At the time of print New Zealand is in Covid-19 Orange Traffic Light system. Should this change, we will adhere to any Government regulations.

(P13) LATE ENTRIES: Late entries will be accepted under the following conditions:

- 1 The competitor must have formally entered his/her participation in the Show prior to the entry closing date
- 2 The horse and/or pony for which an extra entry is sought must have entries recorded for that specific animal prior to the entry closing date
- 3 Any late entry shall incur a penalty of 50% of the prescribed entry fee for that event
- 4 Any such entries must be lodged at the Horse Secretary's office by 4pm on the day prior to the competition
- 5 Late entries under this clause shall be the first to compete in the class/classes for which they are late entered and shall be eligible for all the benefits relating to that class/classes

NOTE No late entries will be accepted from any competitors who have missed the closing date and have no prior entries lodged.

(P3) DOGS: NO dogs other than those officially entered in the scheduled competitions, shall be permitted on the grounds. This rule applies to EVERYONE entering the grounds. There shall be NO EXCEPTIONS!

STABLING

There are limited number covered yards - please read!

SHOWING COMPETITORS: Covered yards for Wednesday night, vacate 12pm noon Thursday, limited numbers \$25 for Wednesday night/Thursday 12pm noon. Please leave yard clean.

Covered yards, stallion box, open yards – All covered yards will be issued on a performance basis. Covered yards, stallion boxes or open yards – per Show.

Covered yards: Per Show: \$45 - Wednesday, Thursday, Friday nights

Stallion boxes: Per Show \$40 Compulsory for ALL stallions.

Open yards: Per Show \$15

No portable yards are allowed.

The above accommodation fees must be added to the entry fees. If for any reason the Association is unable to allocate your request, a refund will be payable. Please remove all string/bailing twine from yards and leave clean. **NOTE:** Once stabling has been allocated, NO REFUND will be payable for scratched equines that have NOT been officially notified prior to Monday of the Show.

CAMPING DURING THE SHOW: Camping fee \$15 per truck/float for the show will apply from Wednesday-Saturday for the Show. There is to be no tethering cords between trucks or other vehicles and the organising committee will not accept any unsafe use of these electrical sites.

CAMPING PRIOR AND AFTER THE SHOW: There will be no admittance to the grounds before Monday prior to the Show for Equestrian competitors arriving prior to Wednesday. All ablution facilities will be available. The grounds must be vacated by Monday after the Show. A standard camping fee of \$15.00 per person per night will apply for Monday and Tuesday nights. These fees are to be paid in advance with your entries. If you are arriving after daylight hours, please enter through Gate 1 – Main entrance only. **CATALOGUES:** All competitors shall pay \$6.00 for their catalogue when entering. The catalogue will be available from the Horse Secretary's office in the foyer of the GEC indoor arena from 2pm Wednesday, and outside of the horse secretary's office hours, from the stabling steward.

ENTRY, ENTRY FEES AND PRIZE MONEY: Are set out in this schedule. Preferred way to enter is online www.main-events.com with PoliPay. Dressage only, www.evoevents.co.nz. Manual entry forms: ESNZ classes (dressage, show jumping and show hunter); Non-ESNZ classes (Showing [including hunter jumping and working hunters], Carriage Driving, Tomorrow's Stars). Post, show office in person (eftpos available). All fees must be paid at time of entry. A bank account number must be supplied with your entry, for prize money payments. Prize money will be paid by direct credit, within 21 days. Withholding tax: You are advised that the IRD deem the winner of prize money in excess of \$500.00 in any one class liable to pay withholding tax of 20% on the amount won in excess of the \$500.00 threshold. This applies to the Horse Grand prix 1st – 4th, please enter your IRD/GST number.

(P4) REFUNDS: The Committee will not accept claims for refunds of entry fees unless the scratching of an entry is made officially in writing to the secretary either prior to the Show or in sufficient time to avoid disruption to the smooth running of the competition. In the event of scratching(s) prior to the Show, a scratching fee of \$25.00 per equine, Doctor or Veterinary certificate is required. No refund of stabling or ground levy fees if scratching made after Sunday prior to the Show.

ENTRY ACCEPTANCE: Entries are made and accepted subject to the Rules and Regulations of The Royal Agriculture Society of New Zealand (RAS – prefixed by the letter 'R') as amended in June 2019 and including the Definition of Terms, and/or of the Poverty Bay Agricultural & Pastoral Association (PB A&P Assn – prefixed by the letter 'P') as amended in June 2006. Copies of the Rules and Regulations are obtainable from the Secretary. As from June 2010 the 'Yellow Card' system will operate in Equestrian Section of all RAS affiliated Shows/Events. Implementation of the 'Yellow Card' will be in accordance with the RAS Rules and Regulations: www.ras.org.nz. Entries in Equestrian Sport New Zealand (ESNZ) classes are made and accepted

subject to the Rules and Regulations of ESNZ, including the notification of official warning procedures 'ESNZ Official Warning 2013': www.nzequestrian.org.nz. All competitors shall be conversant with the rules and regulations, which are particular application to entries in all horse and pony classes.

(R51) SAFETY HELMETS: Wearing a hard hat is compulsory for anyone competing on, working in, or schooling or riding for any other reason an equine at the PB A&P Assn Showgrounds Park. It is compulsory that ALL helmets are red tagged, conforming to the RAS and ESNZ requirements (including carriage driving and Tomorrow's Stars classes). Further information www.ras.org.nz and www.nzequestrian.org.nz. All competitors must be properly dressed in accordance with this Article 127 and Discipline Rules when appearing before spectators.

MEASURING RULES: That apply at this Show are those of the RAS. All equines competing in classes where a height standard is provided may be measured before 8.00am on the day of judging. Contact Peter Andrew, telephone 068671865. The steward in charge may at his discretion, transfer an equine to its appropriate class where it is found on being measured to be wrongly entered.

Height certificates and novice cards must be carried each at all times and be presented on request, otherwise the exhibitor will not be allowed to start.

(P10) STARTING TIMES: Starting times are approximate only but will be adhered to as closely as possible. Although it is provided that horses may compete in more than one class, any or all such classes may be judged simultaneously at the convenience of the judges or stewards. In all cases exhibitors having an exhibit entered into more than one class must elect in which class they compete.

CLASSES/EVENTS: The starting order as set down in the catalogue is drawn by ballot and must be adhered to. All scratchings/class changes/late entries must be in writing at the Horse Secretary's office by 4.00pm the day prior. All competitors not appearing on time will be disqualified.

(P2) ALTERATION TO PROGRAMME: The committee reserves the right to make any alteration in the Show timetable or to postpone the Show, or to withdraw any event, or to amend the conditions of entry into any event as may be deemed advisable.

(P6) ALTERATION TO COURSE: The committee reserve the right to make any alteration if a course is defined in any jumping event, without prior notice.

(P14) ALTERATION TO JUMPING HEIGHT CLASS ENTRIES: Competitors may transfer an entry to a different height class, under the following conditions: intended changes must be notified to the Horse Secretary in writing by 4.00pm on the day immediately prior to the event taking place and will compete first in the newly selected classes.

(P12) SUBSTITUTION FOR INJURY: Where an equine has been duly entered and catalogued in any class, the substitution of another equine shall not be permitted except in accordance with R58. All equines must be named at the time of entry.

(P11) SUBSTITUTION OF ENTRIES: (also refer R39) Substitutions in horse and pony classes will be permitted in writing to the Horse Secretary in time to avoid disruption to the running to the Show, and provided that: 1 The equine for which another entry is substituted may take no further part in the Show. 2 The substitute is of the same grade and/or class as the original entry. 3 Is owned by the same person.

(R89) FORBIDDEN SUBSTANCES: The use of tranquilizers, stimulants, or any drugs capable of affecting the performance of equines is forbidden. Competitors are advised that tests for forbidden substances may be carried out during the Show and that testing of all equines is at the owner's risk. Testing for forbidden substances will be carried out under the Royal Agricultural Society Forbidden Substance Judicial Committee (FSJC) procedures and rules (refer rule 89 RAS Equestrian Judges and Competitors Rule Book and rules and by-laws of section 55(a) of the RAS general rules and regulations).

(P5) PROTESTS: (also refer R2) Any protest is to be lodged no later than 2 (two) hours after the completion of judging and must be lodged with the Secretary of the PB A&P Assn. Any protest is to be accompanied by a fee of \$50.00 which is refundable should the protest be upheld. The Judicial Committee shall comprise the President, the Vice-President and the Chief Horse Steward, together with such additional persons as the President may appoint.

QUAD BIKES AND/OR ANY MOTORISED BIKES and or any motorised bikes. All riders must always wear a helmet. This is inclusive of pillion passengers. No more than one pillion passenger is allowed per bike. Speed is restricted to no more than 10kms per hour. All drivers of ANY bike must hold the appropriate licenses/endorsements to operate the vehicle. Any driver seen to behave contrary to this policy, to operate while under the influence of alcohol, allow pillions to ride in a dangerous manner or generally operate in an unsafe manner will mean their bike will be confiscated for the duration of the event and the offending driver removed from the event.

OFF LIMITS! All equestrian riders and supporters are advised that ALL trade areas, the windmill sideshow amusement park, the main camping ground and other areas are OFF LIMITS during the hours of darkness. You are asked to please stay within the confines of the horse lines after dark. Security personnel will be on the grounds and this policy will be strictly enforced.

HEALTH & SAFETY

I declare that:

1 My accepted entry into the Event will not be transferred to another entrant.

2 In the event of any 'act of God' conditions causing a cancellation of the Event, I agree that my total entry fee is not transferable or refundable.

3 I and any horses or ponies I am riding are in an appropriate physical condition to participate in the Event, given the known parameters of the Event (such as the length, time, physical demands and environmental context).

4 I have taken medical advice on any pre-existing medical conditions and confirm that it is medically safe for me to participate in the Event.

5 I acknowledge that there are risks involved in the Event. I fully realise the dangers of participating in the Event, and fully assume the risks associated with my participation and my wellbeing and safety during and after the Event. I understand and acknowledge that the Event organisers (including all officials and event volunteers) provide no warranties, regarding my wellbeing and safety.

6 I understand and agree that situations may arise during the Event, which may be beyond the immediate control of the Event organisers (including all officials and event volunteers).

7 I will participate in the Event, in a manner that does not endanger either me or others.

8 I agree that to the extent permissible by law, the Event organisers (including all officials and event volunteers), the sponsors and other parties associated with the Event, have no liability to me whatsoever for any direct or indirect loss, (including, but not limited to injury or death) sustained by me during or in any way related to my participation in the Event.

9 I authorise the use of my name, voice, picture and information on this entry form in any broadcast, telecast, promotion, advertising, and in any other way, without payment to me or any other form of compensation.

10 I agree to comply with the rules, and regulations pertaining to the Event.

11 I agree to follow all reasonable safety instructions provided to me by the Event organisers, (including all officials and event volunteers) before, during and after the Event.

12 I consent to receiving medical treatment in the event of illness or injuries suffered during or immediately after the Event.

MEDIA: By entering or attending this competition, you accept that you may appear within differing media streams that are on location covering the event. Your behaviour at the event and within the competition arena is at your discretion and is your responsibility.

SHOW SPECIFIC CONDITIONS: I certify that I have read and understand the conditions of entry to this show as uploaded under the DOWNLOADS tab of our show page. I understand that it is my responsibility to verify that my entry has been received and accepted by the show concerned. Main-Events is not liable for any errors or omissions in the data provided to the show.



POVERTY BAY A&P ASSOCIATION HEALTH & SAFETY POLICY

Poverty Bay A&P Association is committed to providing and maintaining a safe and healthy event for all staff, and to providing the information, training and supervision needed to achieve this.

We will take all practical steps by:

- Providing a safe event, safe equipment and proper materials
- Identifying and monitoring hazards and using the hazard management hierarchy of *eliminate, isolate or minimise*
- Insist upon establishment of safe methods and best practices
- Comply with all Health and Safety (H&S) legislation, regulations and code of practise

We will take responsibility for health and safety procedures, however ALL PEOPLE ON THIS SITE need to be aware of their responsibility and comply with the event's health and safety policy. COMPETITORS will be responsible for themselves at ALL times by observing safe practices and rules/instructions relating to their competition.

Every person involved in the Poverty Bay A&P Show is encouraged to play a vital and responsible role in maintaining a safe and healthy event through:

- Being involved in the event health and safety system
- Following correct procedures
- Safe and proper use of equipment
- Wearing protective clothing and equipment as and when required
- Reporting any pain or discomfort as soon as possible
- Ensuring all accidents and incidents are reported
- Help new employees, trainees and visitors to understand the right safety procedures and why they exist
- Informing the office immediately of any health and safety concerns
- Keeping the event facilities tidy to minimise the risk of any trips and falls

BLUE CARD PROCESS:

ESNZ's Blue card process has been developed to keep riders safe and support officials in their duty of care:

- Officials can exclude a rider from participating in a competition or entire event by issuing a Blue Card because the rider received a serious injury, including concussion or suspected concussion.
- If a rider issued with a Blue Card at an event refuses to withdraw from the event, this may result in disciplinary action taken through the disciplinary process as set out in ESNZ general regulations.
- **The Blue Card notice is logged on a rider's profile on ESNZ database.**
- A Blue Card means that a rider is stood down from all riding activities until clearance from a registered GP or a registered medical specialist can be obtained.
- If a rider has been issued with a Blue Card competes without first providing medical clearance, this may result in disciplinary action been taken thru the ESNZ disciplinary process set out in ESNZ general regulations.

**For any information on health and safety at any time, please call the event H&S officer:
Russell Moylan, mobile 0274631994**

ORDER OF SCHEDULE OF CLASSES

- ❖ Dressage
- ❖ Show Hunter
- ❖ Jumping
- ❖ Led Sport horse/pony and In Hand suitability
- ❖ Christine Beatson Memorial
- ❖ Hunter jumping and working hunters
- ❖ Showing
- ❖ Tomorrow's Stars
- ❖ Gisborne Carriage Driving
- ❖ Carriage Driving



Enter
our show
online at

Main-Events
www.main-events.com

D R E S S A G E

ABSOLUTELY NO late entries accepted in Dressage Section

Dressage entries www.evoevents.co.nz

- Golf Mania Paddock and GEC Indoor Arena

INTRODUCTORY SECTION (NON GRADED) - Horses and ponies

- Riders must have either a current full or introductory membership with ESNZ or pay a casual day membership fee.
- Introductory combinations may enter two introductory tests.
- Introductory combinations that have previously won two champions must ride at the next level.
- Horses/ponies may be unregistered, or ESNZ registered for introductory or graded competitions AND not have won more than 15 Elementary or above grading points.
- Classes 100-103 are open to CN riders (newcomer riders who have never earned grading points at any level at any time in their life).
- Classes 104-107 are open to CN-C3 riders (riders who have never earned grading points at any level above Elementary and riders who have ridden at ESNZ Intermediate Horse Trials).
- Combinations outside the above criteria may compete HC.

GRADED SECTION - Classes 108-121

- Riders must have a current full rider membership with ESNZ
- Flexi starts may be used
- Graded combinations may enter two tests.
- Graded combinations must achieve a grade-able percentage (57%) to be eligible for prize money and Poverty Bay A&P Association dressage awards.
- Most points for local combination (graded horse classes) - **ANN SHERRIFF MEMORIAL CUP**
- Supreme Dressage Award - **RC MURPHY SILVER ROSEBOWL**

Sunday, 9 October 2022

Entry Fee Prize Money

Golf Paddock and GEC Indoor Arena

9:00 AM	100	Introductory A (CN Riders 16 years & under as at 1.8.22)	\$12.00	
	101	Introductory B (CN Riders 16 years & under as at 1.8.22)	\$12.00	
	102	Introductory A (CN Riders 17 years & over as at 1.8.22)	\$12.00	
	103	Introductory B (CN Riders 17 years & over as at 1.8.22)	\$12.00	
	104	Introductory C (CN-C3 Riders 16 years & under as at 1.8.22)	\$12.00	
	105	Introductory E (CN-C3 Riders 16 years & under as at 1.8.22)	\$12.00	
	106	Introductory C (CN-C3 Riders 17 years & over as at 1.8.22)	\$12.00	
	107	Introductory E (CN-C3 Riders 17 years & over as at 1.8.22)	\$12.00	
	108	Pony Preliminary 1A	\$12.00	PM: \$ 20, 15, 12, 10
	109	Pony Preliminary 1D	\$12.00	PM: \$ 20, 15, 12, 10
	110	Pony Novice 2A	\$12.00	PM: \$ 20, 15, 12, 10
	111	Pony Novice 2C	\$12.00	PM: \$ 20, 15, 12, 10
	112	Pony Novice musical freestyle	\$12.00	PM: \$ 20, 15, 12, 10
	113	Preliminary 1A	\$12.00	PM: \$ 20, 15, 12, 10
	114	Preliminary 1D	\$12.00	PM: \$ 20, 15, 12, 10
	115	Novice 2A	\$14.00	PM: \$ 30, 20, 15, 12
	116	Novice 2C	\$14.00	PM: \$ 30, 20, 15, 12
	117	Novice musical freestyle	\$14.00	PM: \$ 30, 20, 15, 12
	118	Elementary 3C	\$14.00	PM: \$ 35, 25, 18, 14
	119	Elementary musical freestyle	\$14.00	PM: \$ 35, 25, 18, 14
	120	Medium and above TOC	\$16.00	PM: \$ 40, 25, 20, 16
		<i>*Please indicate test of choice (TOC)</i>		
	121	Medium and above musical freestyle*	\$16.00	PM: \$ 40, 25, 20, 16
		<i>*Please indicate level of freestyle</i>		

S H O W H U N T E R

Show Hunter Horses

- Practise rounds will be held 3.30pm-5.00pm on Wednesday before the Show. \$5.00 per horse, 2 rounds maximum.
- No practise rounds during the Show.
- All Series classes will be run under national series conditions.

ESNZ Membership and Registration

- Equines competing under the Casual jumping/show hunter levy may start in HOYQ qualifying classes but they will not gain HOYQ points, and are unable to start in any show hunter series classes.
- Riders must have the correct and fully paid ESNZ rider membership to compete in ANY show hunter classes.
- For Horses/Ponies WITHOUT current ESNZ Equine Registration - \$20 (includes \$15 Flexi-Start) For Horses/Ponies WITH current ESNZ Equine Registration but no Jumping/Show Hunter Discipline Start - \$15 Flexi-Start Horses are restricted to 1.10m and Under. Ponies are restricted to 1.00m and Under. Horses/Ponies not eligible to start in Series Classes. Casual Rider Membership - \$15.88/day
- All Show Hunter classes will be run under ESNZ Show Hunter Rules V15 2022 and ESNZ Show Hunter Equitation Series Conditions 2022.
- The "LP" Introductory series is sponsored by the Harris Family; and E.J. Gordon Livestock sponsor the Open Horse and Pony Show Hunter Series.
- Riders and equines not registered with ESNZ are able to compete in Introductory classes but must pay the required casual day membership of \$15 per day with your entries or have an ESNZ introductory membership.

Thursday, 13 October 2022

Entry Fee Prize Money

GEC Indoor Arena

10:00 AM	209	Introductory (no HOYQ points) "LP" 70cm	\$5.00	PM: \$ 10, 8, 5
	210	Introductory (no HOYQ points) "LP" 80cm	\$5.00	PM: \$ 10, 8, 5
	211	Introductory (no HOYQ points) "LP" 90cm	\$5.00	PM: \$ 10, 8, 5
	212	HOYQ Open Welcome Hunter 90cm	\$8.00	PM: \$ 35, 25, 15, 10
	213	HOYQ Open Hunter 1.00m	\$10.00	PM: \$ 35, 25, 15, 10
	214	5, 6, 7 year old Open Hunter 1.00m	\$10.00	PM: \$ 35, 25, 15, 10
	215	SPORT HORSE Junior High Points Series HOYQ 1.00m	\$10.00	PM: \$ 35, 25, 15, 10
	216	CAROUSEL EQUESTRIAN Amateur Hunter High Points Series HOYQ 1.00m	\$10.00	PM: \$ 35, 25, 15, 10
	217	Combined ESNZ Junior Equitation Series, PETTICOAT LANE PERFORMANCE HORSES Adult Equitation Series 1.00m	\$10.00	PM: \$ 35, 25, 15, 10
	218	NRM Open Horse High Points Series HOYQ 1.10m	\$10.00	PM: \$ 35, 25, 15, 10
	219	HOYQ Open Show Hunter 1.10m-1.15m	\$12.00	PM: \$ 50, 40, 30, 20

CHAMPION SHOW HUNTER

Winner of Class 219

RESERVE CHAMPION SHOW HUNTER



Show Hunter Ponies

- Practise rounds will be held on Thursday at the completion of the Horse Events and once the course change has been done.
- \$5.00 per pony, 2 rounds maximum. Striding will be set on the Category C: 11 foot stride.

Category A, then Category B, then Category C

- Pony riders can only enter and compete in ONE equitation class. Either the ESNZ pony rider equitation series 80cm OR pony rider 12 years and under Rider Equitation Series class 70cm.
- Equines competing under the casual jumping/show hunter may start in HOYQ qualifying classes, but they will not gain any HOYQ points, and are unable to start in any show hunter series classes.
- Riders must have a fully paid ESNZ riders' membership to compete in ANY show hunter recognised classes.
- All show hunter classes will be run under ESNZ Show Hunter Rules V15 2022 and ESNZ Show Hunter Equitation Series Conditions 2022.

ESNZ Membership and Registration

- All riders must have the correct and fully ESNZ rider membership to compete in jumping/show hunter classes. Introductory members or casual membership (\$15/day) may only compete in introductory classes (ponies 80cm and below; horses 90cm and below).
- All equines must have a FULL ESNZ registration, and a paid annual jumping/show hunter start to compete in ANY series class.
- For Horses/Ponies WITHOUT current ESNZ Equine Registration - \$20 (includes \$15 Flexi-Start) For Horses/Ponies WITH current ESNZ Equine Registration but no Jumping/Show Hunter Discipline Start - \$15 Flexi-Start Horses are restricted to 1.10m and Under. Ponies are restricted to 1.00m and Under. Horses/Ponies not eligible to start in Series Classes. Casual Rider Membership - \$15.88/day
- Ponies may only enter in their correct height category for High Points classes only. Please refer to the Show Hunter Rule book.
- Pony riders MUST carry a current height certificate
- All Series classes run under national series conditions
- Part of the E.J. Gordon Livestock Open Horse and Pony Show Hunter Series, and the "LP" Introductory Horse series sponsored by the Harris Family.

Friday, 14 October 2022

Entry Fee Prize Money

GEC Indoor Arena

8 :00 AM	220	HOYQ Open Welcome Hunter Pony 60cm <i>Category A</i>	\$8.00	PM: \$ 25, 20, 12, 8
	221	HOYQ Open Pony Hunter 70cm <i>Category A</i>	\$8.00	PM: \$ 25, 20, 12, 8
	222	BOP & WAIKATO SH GROUPS 12 years and under Rider Equitation Series 70cm (see conditions)	\$8.00	PM: \$ 25, 20, 12, 8
	223	VERO INSURANCE Cat A High Points Series HOYQ 70cm <i>Category A</i>	\$8.00	PM: \$ 25, 20, 12, 8
	224	HOYQ Open Welcome Hunter Pony 70cm <i>Category B</i>	\$8.00	PM: \$ 25, 20, 12, 8
	225	HOYQ Open Pony Hunter 80cm <i>Category B</i>	\$8.00	PM: \$ 25, 20, 12, 8
	226	FIBER FRESH Cat B High Points Series HOYQ 80cm <i>Category B</i>	\$8.00	PM: \$ 25, 20, 12, 8
	227	HOYQ Open Welcome Pony Hunter 80cm <i>Category C</i>	\$8.00	PM: \$ 25, 20, 12, 8
	228	BIG ON WRITING Pony Rider Equitation Series 80cm <i>Category C</i>	\$8.00	PM: \$ 25, 20, 12, 8
	229	HOYQ Open Pony 90cm <i>Category C</i>	\$8.00	PM: \$ 25, 20, 12, 8
	230	ANIWELL Cat C High Points Series HOYQ 90cm <i>Category C</i>	\$8.00	PM: \$ 25, 20, 12, 8

Category C

CHAMPION SHOW HUNTER PONY

Judged from High Points classes.

RESERVE CHAMPION SHOW HUNTER PONY

J U M P I N G

This is a Grand Prix Show

- Equines may only enter two (2) jumping classes on Thursday and Friday of the Show.
- Equines may only enter one (1) jumping class on Saturday of the Show, except ponies in Ring 3 (GEC Indoor Arena) Saturday.
- Ponies entering in the Grand Prix may not enter classes below 1.10 metre.
- All series classes will be run under the national series conditions.

ESNZ Membership and Registration

- All riders must have FULL ESNZ membership to compete in jumping/show hunter classes. Introductory members or casual members (\$15/day) may only compete in introductory classes (ponies 80cm and below; horses 90cm and below).
- All equines must have FULL ESNZ registration, and a paid annual jumping/show hunter start to compete in ANY series class.
- For Horses/Ponies WITHOUT current ESNZ Equine Registration - \$20 (includes \$15 Flexi-Start) For Horses/Ponies WITH current ESNZ Equine Registration but no Jumping/Show Hunter Discipline Start - \$15 Flexi-Start Horses are restricted to 1.10m and Under. Ponies are restricted to 1.00m and Under. Horses/Ponies not eligible to start in Series Classes. Casual Rider Membership - \$15.88/day
- All equines jumping/show hunter levy is compulsory (\$5/show).

Thursday, 13 October 2022

Entry Fee Prize Money

Ring 1 Farmers Transport Ltd

9 :00 AM	306	Open Horse 1.10m Two phase Art 274 2.5.1 (special two phase)	\$10.00	PM: \$ 60, 40, 20, 15, 10
	307	Open Horse 1.15m Art 274 2.5.1 (special two phase)	\$10.00	PM: \$ 60, 40, 20, 15, 10
	308	Open Horse 1.20m Art 274 2.5.1 (special two phase)	\$12.00	PM: \$ 70, 50, 40, 30, 12, 12, 12
	309	Open Horse 1.30m Art 274 2.5.1 (special two phase)	\$15.00	PM: \$ 100, 70, 50, 40, 30
	310	Open Horse 1.40m AM5 Art 238.2.2	\$25.00	PM: \$ 250, 150, 100, 60, 40
	311	Open Pony 1.15m-1.20m AM5 Art 238.2.2	\$10.00	PM: \$ 60, 40, 30, 20

1.15m ponies to jump first, followed by 1.20m ponies. Then 1.15m ponies jump-off, followed by 1.20m ponies jump-off.

Ring 2 LeaderBrand Produce Ltd

9 :00 AM	312	Intro Pony 70cm A1 (1 round) Art 238	\$5.00	PM: \$ 50
	313	Intro Pony 80cm A1 (1 round) Art 238	\$5.00	PM: \$ 50
	314	Open Pony 90cm Art 274 2.5.1 (special two phase)	\$5.00	PM: \$ 30, 20, 15, 10
	315	Open Pony 1.00m Art 274 2.5.1 (special two phase)	\$5.00	PM: \$ 30, 20, 15, 10
	316	Open Pony 1.05m Art 274 2.5.1 (special two phase)	\$5.00	PM: \$ 30, 20, 15, 10
	317	Open Pony 1.10m Art 274 2.5.1 (special two phase)	\$6.00	PM: \$ 35, 25, 15, 10
	318	Intro Horse 80cm Art 274 1.5.1	\$6.00	PM: \$ 50
	319	Intro Horse 90cm Art 274 1.5.1	\$7.00	PM: \$ 90
	320	Open Horse 1.00m Art 274 2.5.1 (special two phase)	\$8.00	PM: \$ 50, 35, 20, 15

Friday, 14 October 2022

Ring 1 Farmers Transport Ltd

8 :30 AM	321	Open Pony 1.15m - 1.20m AM5 Art 238 2.2	\$10.00	PM: \$ 60, 40, 30, 20
----------	-----	---	----------------	-----------------------

1.15m ponies to jump first, followed by 1.20m ponies. Then 1.15m ponies jump-off, followed by 1.20m ponies jump-off.

	322	DUNSTAN HORSEFEEDS Amateur Rider Series 1.10m-1.20m AM5 Art 238 2.2	\$15.00	PM: \$ 100, 70, 50, 30, 25, 25
	323	Open Horse 1.20m AM5 Art 238.2.2	\$20.00	PM: \$ 150, 100, 60, 40, 30
	324	MAINLAND COACHWORK Junior Rider Series with equitation 1.15m - 1.25m AM5 Art 238 2.2	\$30.00	PM: \$ 350, 180, 130, 100, 80, 60
	325	HARRISON LANE Pro Amateur Series 1.20m - 1.30m AM5 Art 238 2.2	\$15.00	PM: \$ 100, 70, 50, 30, 25, 25

326	MATTHEWS HANOVERIANS 7-Year Old Breeders Series 1.30m AM5 Art 238 2.2	\$30.00	PM: \$ 350, 180, 130, 100, 80, 60
327	FMG Young Rider Series 1.25m - 1.35m AM5 Art 238 2.2	\$30.00	PM: \$ 350, 180, 130, 100, 80, 60
328	Open Horse 1.35m Accumulator with optional Joker Art 269	\$25.00	PM: \$ 250, 150, 100, 60, 40

Ring 2 LeaderBrand Produce Ltd

8 :30 AM	329	Intro Horse 90cm Two phase Art 274 1.5.1.	\$8.00	PM: \$ 130
	330	Open Horse 1.00m Two phase Art 274 1.5.3	\$8.00	PM: \$ 50, 35, 20, 15
	331	Open Horse 1.10m Two phase Art 274 1.5.3	\$10.00	PM: \$ 70, 50, 30, 20, 10
	332	Intro Pony 80cm Two Phase Art 274.1.5.1	\$5.00	PM: \$ 50
	333	Open Pony 90cm Two phase Art 274 1.5.3	\$5.00	PM: \$ 30, 20, 15, 10
	334	Open Pony 1.00m Two phase Art 274 1.5.3	\$7.00	PM: \$ 35, 25, 15, 10
	335	Open Pony 1.10m Two phase Art 274 1.5.3	\$7.00	PM: \$ 35, 25, 15, 10

Saturday, 15 October 2022

Ring 1 Farmers Transport Ltd

8 :00 AM	336	Open Horse Classic 1.15m AM5 Art 238.2.2	\$15.00	PM: \$ 100, 75, 40, 25, 15
	337	Open Horse Classic 1.20m AM5 Art 238.2.2	\$18.00	PM: \$ 125, 90, 50, 40, 30
	338	Open Horse Classic 1.25m AM5 Art 238.2.2	\$20.00	PM: \$ 150, 100, 60, 40, 30
	339	Open Horse Classic 1.35m AM5 Art 238.2.2	\$35.00	PM: \$ 350, 250, 200, 150, 100, 100
	340	COUNTRY TV Pony Grand Prix 1.20m-1.30m AM5 Art 261 5.1.2	\$30.00	PM: \$ 400, 200, 150, 110, 80, 60
		<i>Lawson Candy Memorial Challenge Cup</i>		
	341	EVO EVENTS Horse Grand Prix Series in conjunction with EAST COAST WOOLS LTD 1.40m-1.50m Art 261.5.1.1 <i>GO & RB Hansen Memorial Prize and Hikurangi Memorial Cup</i>	\$75.00	PM: \$ 1500, 1200, 850, 600, 475, 375

Ring 2 LeaderBrand Produce Ltd

8 :00 AM	342	EAST COAST PERFORMANCE HORSES 5 Year Old Breeders Series 1.10m A1 Art 238.1.1	\$12.00	PM: \$ 250
	343	Open Horse 1.10m AM5 Art 238.2.2	\$10.00	PM: \$ 70, 50, 30, 20, 10
	344	ULTRAMOX 6 Year Old Breeders Series 1.20m A1 Art 238.1.1	\$15.00	PM: \$ 350
	345	Open Horse Classic 1.00m AM5 Art 238.2.2	\$10.00	PM: \$ 70, 50, 30, 20, 10
	346	Open Pony Classic 1.05m AM5 Art 238.2.2	\$10.00	PM: \$ 70, 50, 30, 20, 10
	347	Open Pony Classic 1.15mm Art 238 2.2	\$10.00	PM: \$ 70, 50, 30, 20, 10

Ring 3 GEC Indoor Arena

8 :00 AM	348	Open Pony 85cm AM5 Art 238.2.2	\$6.00	PM: \$ 30, 20, 15, 10
		<i>Ponies in Ring 3 (GEC Indoor arena) Saturday may have two starts and NOT compete in any other jumping ring. Class in draw order.</i>		
	349	Open Pony 95m AM5 Art 238.2.2	\$7.00	PM: \$ 35, 25, 15, 10
		<i>Ponies in Ring 3 (GEC Indoor arena) Saturday may have two starts and NOT compete in any other jumping ring. Class in draw order.</i>		



LED AND IN HAND

Led Sport Horse and Pony

- Horses over 148cm
- Ponies not exceeding 148cm (height certificate strongly advised)
- A youngstock exhibit may only be entered in the Pony or the Horse youngstock section (not both)
- All stallions/colts MUST be shown in a bit
- All Horses or Ponies 3 years or over MUST be shown in a bit
- Numbers must be worn (armband numbers are acceptable).

Wednesday, 12 October 2022

Entry Fee

Prize Money

Showing Arena 1

4 :00 PM	450	Horse (Youngstock and Adult) in hand Best Presented	\$5.00	PM: \$ 15, 10, 5
	451	Horse Colt or Gelding - 3 years and under (to mature over 148cm)	\$5.00	PM: \$ 15, 10, 5
	452	Horse Filly 3 years and under, suitable to breed sport horses (to mature over 148cm)	\$5.00	PM: \$ 15, 10, 5

CHAMPION YOUNGSTOCK IN HAND SPORT HORSE

To be judged from the winner of classes 451 and 452. Second place horse to the Champion to be judged alongside the remaining for Reserve. Winner eligible for Supreme Champion in hand Sport Horse/Pony of the Show.

RESERVE CHAMPION YOUNGSTOCK IN HAND SPORT HORSE

	453	Horse Stallion or Gelding 4 years and over (over 148cm)	\$5.00	PM: \$ 15, 10, 5
	454	Horse Mare 4 years and over - suitable to breed sport horses (over 148cm)	\$5.00	PM: \$ 15, 10, 5

CHAMPION ADULT IN HAND SPORT HORSE

To be judged from the winner of classes 453 and 454. Second place horse to the Champion to be judged alongside the remaining for Reserve. Winner eligible for Supreme Champion in hand Sport Horse/Pony of the Show.

RESERVE CHAMPION ADULT IN HAND SPORT HORSE

Showing Arena 2

4 :00 PM	455	Pony (Youngstock and Adult) in hand Best Presented	\$5.00	PM: \$ 15, 10, 5
	456	Pony Colt or Gelding - 3 years and under (not exceeding 148cm at maturity)	\$5.00	PM: \$ 15, 10, 5
	457	Pony Filly 3 years and under - suitable to breed sport horses (not exceeding 148cm at maturity)	\$5.00	PM: \$ 15, 10, 5

CHAMPION YOUNGSTOCK IN HAND SPORT PONY

To be judged from the winner of classes 456 and 457. Second place pony to the Champion to be judged alongside the remaining for Reserve. Winner eligible for Supreme Champion in hand Sport Horse/Pony of the Show.

RESERVE CHAMPION YOUNGSTOCK IN HAND SPORT PONY

	458	Pony Stallion or Gelding 4 years and over (not exceeding 148cm)	\$5.00	PM: \$ 15, 10, 5
	459	Pony Mare 4 years and over - suitable to breed sport horses (not exceeding 148cm)	\$5.00	PM: \$ 15, 10, 5

CHAMPION ADULT IN HAND SPORT PONY

To be judged from the winner of classes 458 and 459. Second place pony to the Champion to be judged alongside the remaining for Reserve. Winner eligible for Supreme Champion in hand Sport Horse/Pony of the Show.

RESERVE CHAMPION IN HAND SPORT PONY

SUPREME IN HAND SPORT HORSE/PONY

Garland kindly sponsored by Regent Park NZ

In Hand Suitability Classes

FOLLOWS LED SPORT HORSE AND PONY

- Open to all Horses and Ponies (can enter multiple classes).
- All stallions/colts MUST be shown in a bit.
- All Horses or Ponies 3 years or over MUST be shown in a bit.
- Numbers must be worn (armband numbers are acceptable).

Wednesday, 12 October 2022

Showing Arena 1

460	Suitable as Field Hunter	\$5.00	PM: \$ 15, 10, 5
	<i>Kindly sponsored by Poverty Bay Hunt Inc, highest placed local combination received two hunting day registrations.</i>		
461	Suitable for Show Jumping	\$5.00	PM: \$ 15, 10, 5
462	Suitable for Dressage	\$5.00	PM: \$ 15, 10, 5
	<i>Award for the highest placed local horse or pony.</i>		
463	Suitable as Show Hack/Pony	\$5.00	PM: \$ 15, 10, 5

Local showing senior handler with most points for in hand section

Local showing junior handler with most points for in hand section

Christine Beatson Memorial

FOLLOWS IN HAND CLASSES

- Open to all divisions of Saddle Show Horses.

To be judged by a panel of 4 judges

- Judges will score each horse in each of conformation and quality (under saddle and stripped), paces, manners and workout with the points collated
- Profile information including breeding information to be provided with entry
- Horses will work on the circle then perform a set workout (which will be made available from August).

Judge 1: Assessment of conformation, trueness to type (park hack, hack, riding horse, hunter) at the halt and in the movement

Judge 2: Assessment of paces and movement, quality, and regularity of paces, to include a good walk, lengthened trot and canter, in-hand gallop

Judge 3: Assessment of manners, attitude, transitions, and obedience

Judge 4: Assessment of the workout: quality of work, execution of the movements, overall impression.

Assessment in-hand of conformation and overall quality – all four judges (all riders will require a handler for saddling/unsaddling).

Scoring: Under saddle 30 - conformation, type

30 - paces and movement

30 - manners and attitude

30 - workout

120

In hand (30 per judge) 120

TOTAL 240 points

Wednesday, 12 October 2022

Entry Fee Prize Money

Showing Arena 1

5 :30 PM	660	Christine Beatson Memorial Equitation	\$20.00	PM: \$ 250, 200, 150, 100
		<i>Christine Beatson Memorial Salver donated by the Hyland Family. Garland kindly sponsored by Mrs Ann Holden.</i>		
		<i>Prize money kindly sponsored by the Hyland Family and the Poverty Bay A&P Association.</i>		

H U N T E R J U M P I N G W O R K I N G H U N T E R S

Hunter Jumping - Ponies

HOY Qualifier

Not before 2.00pm

- Height certificates and novice cards must be carried at all times and presented on request, otherwise the exhibitor will not be allowed to start.
- Numbers must be worn (armband numbers are acceptable).

Thursday, 13 October 2022

Entry Fee Prize Money

Trust Tairawhiti Main Arena

2 :00 PM	410	Novice Pony Hunter over fences 0-2 wins	\$5.00	PM: \$ 15, 10, 5
	411	Novice Pony Hunter over fences 0-5 wins	\$5.00	PM: \$ 15, 10, 5
		<i>WL Rutledge Challenge Cup</i>		
	412	Open Pony Hunter over fences not exceeding 138cm	\$5.00	PM: \$ 15, 10, 5
	413	Open Pony Hunter over fences over 138cm & not exceeding 148cm	\$5.00	PM: \$ 15, 10, 5

Kevin Hall Memorial Cup

CHAMPION HUNTER JUMPING PONY

To be judged from classes 412 and 413. Second placed pony to the Champion to be judged alongside the remaining winner for Reserve.

RESERVE CHAMPION HUNTER JUMPING PONY

Working Hunter - Ponies

FOLLOWS PONY HUNTER JUMPING CLASSES

HOY qualifier

- Working Hunter Ponies are required to demonstrate jumping ability and be of good strong confirmation with good manners, sound paces and be a comfortable ride over long distances.
- They will be required to jump a minimum of three (3) hunter type fences.
- Jumping style and ability 40%, confirmation 30%, paces and manners 30%.
- Ponies will be required to gallop within the confines and constraints of the venue involved.
- Numbers must be worn (armbands numbers are acceptable).
- No boots or bandages permitted

Thursday, 13 October 2022

Trust Tairawhiti Main Arena

	420	Novice Working Hunter Pony 0-2 wins	\$5.00	PM: \$ 15, 10, 5
	421	Novice Working Hunter Pony 0-5 wins	\$5.00	PM: \$ 15, 10, 5
	422	Open Working Hunter Pony not exceeding 138cm	\$5.00	PM: \$ 15, 10, 5
	423	Open Working Hunter Pony over 138cm & not exceeding 148cm	\$5.00	PM: \$ 15, 10, 5
	424	Open Pony Wire Jump	\$5.00	PM: \$ 15, 10, 5

Sir Winston Challenge Cup

CHAMPION WORKING HUNTER PONY

To be judged from winners of the open classes only. Second placed pony to the champion to be judged alongside the remaining winners for Reserve.

RESERVE CHAMPION PONY WORKING HUNTER

Working Hunter - Horses

HOY qualifier

- Working Hunter Horses are required to demonstrate jumping ability and be of good strong confirmation with good manners, sound paces and be a comfortable ride over long distances.
- They will be required to jump a minimum of three (3) hunter type fences. Jumping style and ability 40%, confirmation 30%, paces and manners 30%.
- Horses will be required to gallop within the confines and constraints of the venue involved.
- Numbers must be worn (armband numbers are acceptable).
- No boots or bandages permitted.
- The jumping course shall be the 3 Round the Ring jumps and include 1 wire jump

Friday, 14 October 2022

Entry Fee Prize Money

Trust Tairawhiti Main Arena

10:00 AM	430	Novice Working Hunter Horse 0-2 wins	\$8.00	PM: \$ 20, 15, 10
	431	Novice Working Hunter Horse 0-5 wins	\$8.00	PM: \$ 20, 15, 10
	432	Open Working Hunter Horse over 148cm and not exceeding 153cm	\$8.00	PM: \$ 20, 15, 10
	433	Open Working Hunter Horse over 153cm and not exceeding 163cm	\$8.00	PM: \$ 20, 15, 10
	434	Open Working Hunter Horse over 163cm	\$8.00	PM: \$ 20, 15, 10
	435	Wire Jump - 2 wires	\$8.00	PM: \$ 20, 15, 10

Mrs M W Coop Silver Cup

CHAMPION WORKING HUNTER HORSE

To be judged from the winners of the open classes only. Second placed horse to the Champion to be judged alongside the remaining winners for Reserve. Paddy O'Flynn Challenge Cup

RESERVE CHAMPION WORKING HUNTER HORSE

Hunter Jumping - Horses

FOLLOWS WORKING HUNTERS*

HOY qualifier

***Classes 440-444 Friday**

Classes 445-447 Saturday 10.30am

- Horse jumps will not exceed 1.15m.
- Height certificates and novice cards must be carried at all times and presented on request, otherwise the exhibitor will not be allowed to start.
- Numbers must be worn (armband numbers are acceptable).

Friday, 14 October 2022

Trust Tairawhiti Main Arena

	440	Eyeopener Jump	\$8.00	PM: \$ 20, 15, 10
		<i>Full round includes single brush and wire</i>		
	441	Novice Hunter over fences 0-2 wins	\$8.00	PM: \$ 20, 15, 10
		<i>First 3 jumps</i>		
	442	Novice Hunter over fences 0-5 wins	\$8.00	PM: \$ 20, 15, 10
		<i>First 3 jumps. Nigel Park Memorial Cup</i>		
	443	Open Hunter over fences, over 148cm and not exceeding 163cm	\$15.00	PM: \$ 100, 50, 35, 15
		<i>Full round including double brush and wire.</i>		
	444	Open Hunter over fences, over 163cm	\$15.00	PM: \$ 50, 100, 35, 15
		<i>Full round including double brush and wire. RK Murphy Memorial Salve (to winning Lady)</i>		

Saturday, 15 October 2022

Entry Fee Prize Money

Trust Tairawhiti Main Arena

10:30 AM	445	Open Lightweight Hunter over fences	\$8.00	PM: \$ 20, 15, 10
		<i>To be ridden by a Lady or a Gentleman</i>		
	446	Open Heavyweight Hunter over fences	\$8.00	PM: \$ 20, 15, 10
		<i>To be ridden by a Gentleman or a Lady</i>		
	447	Open Hunter Jump over fences	\$20.00	PM: \$ 150, 200, 100, 50

Full round including double brush and wire. One refusal will cause elimination and the competitor must leave the ring

CHAMPION HUNTER JUMPING HORSE

To be judged from classes 443, 444, 445, 446 and 447. Second placed horse to the Champion to be judged alongside the remaining winner for Reserve. RESERVE CHAMPION HUNTER JUMPING HORSE

S H O W I N G P O N Y S H O W I N G S E C T I O N

SHOWING ARENA 2 AND 4

“Golf Mania Paddock”

Saddle Hunter - Ponies

HOY qualifier

- A pony may only be entered in the Show Pony Section or the Saddle Hunter Pony Section - NOT BOTH.
- All novice pony classes are open to riders of any age.

Thursday, 13 October 2022

Entry Fee Prize Money

Showing Arena 4

8 :30 AM 516 Novice Saddle Hunter Pony over 138cm and not exceeding 148cm 0-2 wins **\$5.00** PM: \$ 15, 10, 5

517 Novice Saddle Hunter Pony over 138cm & not exceeding 148cm 0-5 wins **\$5.00** PM: \$ 15, 10, 5

CHAMPION NOVICE SADDLE HUNTER PONY over 138cm & not exceeding 148cm

To be judged from winners of the novices classes only. Second placed pony to the Champion to be judged alongside the remaining winners for Reserve.

RESERVE CHAMPION NOVICE SADDLE HUNTER PONY over 138cm & not exceeding 148cm

518 Novice Paced & Mannered Saddle Hunter Pony over 138cm & not exceeding 148cm 0-5 wins **\$5.00** PM: \$ 15, 10, 5

519 Open Saddle Hunter Pony over 138cm & not exceeding 143cm **\$5.00** PM: \$ 15, 10, 5

520 Open Saddle Hunter Pony over 143cm & not exceeding 148cm **\$5.00** PM: \$ 15, 10, 5

CHAMPION OPEN SADDLE HUNTER PONY over 138cm & not exceeding 148cm

To be judged from winner of the above classes 519 and 520. Second placed pony to the Champion to be judged alongside the remaining winner for Reserve. Winner eligible for Supreme Champion Pony

RESERVE CHAMPION OPEN SADDLE HUNTER PONY over 138 cm & not exceeding 148cm

521 Open Paced & Mannered Saddle Hunter Pony over 138cm and not exceeding 148cm **\$5.00** PM: \$ 15, 10, 7, 5

Winner eligible for Champion Paced & Mannered Pony of Show

Showing Arena 2

8 :30 AM 510 Novice Saddle Hunter Pony not exceeding 138cm 0-2 wins **\$5.00** PM: \$ 15, 10, 5

511 Novice Saddle Hunter Pony not exceeding 138cm 0-5 wins **\$5.00** PM: \$ 15, 10, 5

CHAMPION NOVICE SADDLE HUNTER PONY not exceeding 138cm

To be judged from winner of novice classes only. Second placed pony to the Champion to be judged alongside the remaining winner for Reserve.

RESERVE CHAMPION NOVICE SADDLE HUNTER PONY not exceeding 138cm

512 Novice Paced and Mannered Saddle Hunter Pony not exceeding 138cm 0-5 wins **\$5.00** PM: \$ 15, 10, 5

513 Open Saddle Hunter Pony not exceeding 128cm **\$5.00** PM: \$ 15, 10, 5

514 Open Saddle Hunter Pony over 128cm & not exceeding 138cm **\$5.00** PM: \$ 15, 10, 5

CHAMPION OPEN SADDLE HUNTER PONY

not exceeding 138cm

To be judged from winner of the open classes only. Second placed pony to the Champion to be judged alongside the remaining winner for Reserve. Winner eligible for Supreme Champion Pony.

RESERVE CHAMPION OPEN SADDLE HUNTER PONY

not exceeding 138cm

515 Open Paced and Mannered Saddle Hunter Pony not exceeding 138cm **\$5.00** PM: \$ 15, 10, 5

Winner eligible for Champion Paced & Mannered Pony of Show

Junior Rider

FOLLOWS PONY SADDLE HUNTER (and possibly showing arena 4 depending on class size)
HOY qualifier

Showing Arena 2

530 Best Novice Junior Rider 0-5 wins **\$5.00** PM: \$ 15, 10, 5

531 Best Rider 11 years and under **\$5.00** PM: \$ 15, 10, 5

532 Best Rider 12, 13 and 14 years **\$5.00** PM: \$ 15, 10, 5

533 Best Rider 15 and 16 years **\$5.00** PM: \$ 15, 10, 5

CHAMPION JUNIOR RIDER

To be judged from classes 530, 531, 532 and 533. Second placed rider to the Champion to be judged alongside the remaining winners for Reserve.

RESERVE CHAMPION JUNIOR RIDER

Pony Breeders of NZ Saddle Hunter

FOLLOWS JUNIOR RIDER CLASSES

- To be eligible for these classes the Pony must be fully registered with the Pony Breeder's Society of NZ (Inc), that is to have permanent registration number, be 148cm or under, and to be foaled in New Zealand.
- The Pony must be ridden by a rider under the age of 17 years.
- Permanent Registration Number (PBNZ) must be stated on the entry form.
- If it is subsequently found that the winner is not registered with the Society, they will be required to forfeit this award.
- The Pony Breeders Society of NZ has donated special sashes for the following class.
- Winner must be able to show the ring steward their registration certificate before receiving the sash.

Showing Arena 2

540 PONY BREEDERS Ridden Saddle Hunter Sash **\$5.00**

Pony must be fully registered with the Pony Breeder's Society of NZ (INC), that is to have permanent registration number, be 148cm or under, and to be foaled in NZ. The pony must be ridden by a rider under the age of 17 years.

Pony Breeders of NZ Ridden Pony

FOLLOWS NZPB SADDLE HUNTER

541 PONY BREEDERS Ridden Sash **\$5.00**

Pony must be fully registered with the Pony Breeder's Society of NZ (INC), that is to have permanent registration number, be 148cm or under, and to be foaled in NZ. The pony must be ridden by a rider under the age of 17 years.



NZ Riding Pony Society

FOLLOWS PBNZ RIDDEN PONY

- Entrants in this class may be of show pony type/saddle hunter pony type. The emphasis when judging these entrants is first and foremost quality confirmation (as pertaining to the Show Pony type or the Show/Saddle Hunter-type Riding Pony) and soundness (80%). Quality movement (in relation to type) combined with manners benefiting an animal bred to be a child's mount complete the criteria of a winning entrant (20%). Working entrants on the circle along with the opportunity to view the 'straightness' of each entrant's action is adequate. No workout is required. Entrants may be 'stripped' of their saddles.
- Entrants in this class may be of show pony type or show/saddle hunter type pony.
- To be eligible for these classes the Pony must be fully registered with the NZ Riding Pony Society (Inc), that is to have permanent registration number. Be 148cm or under, and to be foaled in New Zealand.
- The Pony must be ridden by a rider under the age of 17 years.
- Permanent Registration Number (NZRP) must be stated on the entry form.
- If it is subsequently found that the winner is not registered with the Society, they will be required to forfeit this award.
- The NZ Riding Pony Society NZ has donated special sashes for the following class.
- Winner must be able to show the ring steward their registration certificate before receiving the sash.

Showing Arena 2

- 542 NZ RIDING PONY SOCIETY Ridden Pony/Saddle Hunter **\$5.00**
Pony must be fully registered with the NZ Riding Pony Society (INC), that is to have permanent registration number, be 148cm or under, and to be foaled in NZ. The pony must be ridden by a rider under the age of 17 years.

Show Ponies

FOLLOWS A SHORT BREAK AFTER NZ RIDING PONY SOCIETY CLASS

HOY qualifier

- A pony may only be entered in the Show Pony Section or Saddle Hunter Pony Section - NOT BOTH.
- All novice pony classes are open to riders of any age.

- | | | | |
|-----|---|---------------|------------------|
| 550 | Novice Show Pony not exceeding 148cm 0-2 wins | \$5.00 | PM: \$ 15, 10, 5 |
| 551 | Novice Show Pony not exceeding 148cm 0-5 wins
CHAMPION NOVICE SHOW PONY
not exceeding 148cm
<i>To be judged from the winner of the novice classes only. Second placed pony to the Champion to be judged alongside the remaining winner for Reserve.</i>
RESERVE CHAMPION NOVICE SHOW PONY
not exceeding 148cm | \$5.00 | PM: \$ 15, 10, 5 |
| 552 | Novice Paced & Mannered Show Pony not exceeding 148cm 0-5 wins | \$5.00 | PM: \$ 15, 10, 5 |
| 553 | Open Show Pony not exceeding 128cm | \$5.00 | PM: \$ 15, 10, 5 |
| 554 | Open Show Pony over 128cm & not exceeding 138cm
<i>Topsey Turvey Trophy</i>
CHAMPION OPEN SHOW PONY
not exceeding 138cm
<i>To be judged from winner of classes 553 and 554. Second placed show pony to the Champion to be judged alongside the remaining winner for Reserve. Winner eligible for Supreme Champion Pony.</i>
RESERVE CHAMPION OPEN SHOW PONY
not exceeding 138cm | \$5.00 | PM: \$ 15, 10, 5 |
| 555 | Open Paced & Mannered Show Pony not exceeding 138cm | \$5.00 | PM: \$ 15, 10, 5 |
| | <i>Winner eligible for Supreme Champion Paced & Mannered Pony of the Show</i> | | |
| 556 | Open Show Pony over 138cm & not exceeding 143cm | \$5.00 | PM: \$ 15, 10, 5 |
| 557 | Open Show Pony over 143cm & not exceeding 148cm
CHAMPION OPEN SHOW PONY
over 138cm & not exceeding 148cm
<i>To be judged from winner of classes 556 and 557. Second placed pony to the Champion to be judged alongside the remaining winner for Reserve. Winner eligible for Supreme Champion Pony. W Hegarty Challenge Cup</i>
RESERVE CHAMPION OPEN SHOW PONY
over 138cm and not exceeding 148cm | \$5.00 | PM: \$ 15, 10, 5 |

558 Open Paced & Mannered Show Pony over 138cm & not exceeding 148cm **\$5.00** PM: \$ 15, 10, 5

Winner eligible for Supreme Champion Paced & Mannered Pony of the Show

Lead Rein Ponies

FOLLOWS ON STRAIGHT AFTER NZ RIDING PONY SOCIETY CLASS

HOY qualifier

- Ponies 128cm and under.
- In this section, the judging criteria is 60% suitability, temperament, and safeness, and 40% conformation and paces.
- Riders who have competed in First Ridden, Novice or Open sections are no longer eligible for this section.
- CDE 2 c) Riders taking part in this section are excluded from taking part in other sections of the show.
- Riders must be under eight (8) years of age, with a minimum age of four (4) years, as at 1 August 2022.
- Pony to be led by a leader/attendant (14 years and over) with the lead rein attached to the cavesson noseband of a snaffle bridle.
- Spurs are not allowed although a small cane may be carried.

Goodies bags kindly sponsored by LumberJack Logging.

Showing Arena 4

560 Novice Lead Rein Pony not exceeding 128cm 0-5 wins **\$5.00** PM: \$ 15, 10, 5
561 Open Lead Rein Pony not exceeding 123cm **\$5.00** PM: \$ 15, 10, 5
562 Open Lead Rein Pony over 123cm & not exceeding 128cm **\$5.00** PM: \$ 15, 10, 5

CHAMPION LEAD REIN PONY

To be judged from the winners of classes 560, 561 and 562. Second placed pony to the Champion to be judged alongside the remaining winners for Reserve. Moffet Family Cup

RESERVE CHAMPION LEAD REIN PONY

563 Open Paced & Mannered Lead Rein Pony not exceeding 128cm **\$5.00** PM: \$ 15, 10, 5
564 Novice Lead Rein Rider 0-5 wins **\$5.00** PM: \$ 15, 10, 5
565 Best Lead Rein Rider **\$5.00** PM: \$ 15, 10, 5
566 Future Star - Lead Rein **\$5.00**

Only to be entered if able to walk and trot on the circle in company off the lead rein. Not a HOY qualifier class. Sponsored by Kaitere Farms, special sashes to 6th.

567 NZ RIDING PONY SOCIETY Lean Rein Ponies, not exceeding 128cm **\$5.00**

Pony must be fully registered with the NZ Riding Pony Society (INC), that is to have permanent registration number, be 128cm or under, and to be foaled in NZ. In accordance with the NZRP Society this class is judged under the criteria and standards of the NZPR. The emphasis is on Conformation and Paces, along with suitability, temperament, and safeness. This class is to be judged on the circle with no individual workout.

Supreme Awards - Ponies

FOLLOWS SHOW PONY CLASSES

- Supreme Champion Paced & Mannered Pony of the Show - Winners of Open Paced & Mannered Pony classes.
- Supreme Champion Pony - Winners of Open Pony Saddle Hunter Champions and Open Show Pony Champions.

Showing Arena 2

SUPREME CHAMPION PACED & MANNERED PONY OF THE SHOW

Garland kindly sponsored by HSP Hanoverians and Warmbloods.

SUPREME CHAMPION PONY

Garland kindly sponsored by Brigid Sherriff.

First Ridden Ponies

FOLLOWS PONY SUPREME AWARDS

HOY qualifier

- 138cm and under.
- This is a transition ring from being led to riding your own.
- In this section, the judging criteria is 60% suitability, temperament, and safeness, and 40% conformation and paces.
- This is a transition ring from being led to riding on your own. Riders in this section may not enter any other section, unless in a First Ridden class(s) in a Breed section.
- A First Ridden rider is only able to compete in this section for a maximum of 24 months from the date of their first Show.
- The age limit in the First Ridden Section is under ten (10) years, as at 1 August 2022.

Goodies bags kindly sponsored by Kaitere Farms.

570	Novice First Ridden Pony not exceeding 138cm 0-5 wins	\$5.00	PM: \$ 15, 10, 5
571	Open First Ridden Pony not exceeding 128cm	\$5.00	PM: \$ 15, 10, 5
572	Open First Ridden Pony over 128cm & not exceeding 138cm	\$5.00	PM: \$ 15, 10, 5

CHAMPION FIRST RIDDEN PONY

To be judged from the winners of classes 570, 571 and 572. Second place to the Champion to be judged alongside the remaining winners for Reserve. Moffet Family Cup

RESERVE CHAMPION FIRST RIDDEN PONY

573	Novice Paced & Mannered First Ridden Pony 0-5 wins	\$5.00	PM: \$ 15, 10, 5
574	Open Paced & Mannered First Ridden Pony	\$5.00	PM: \$ 15, 10, 5
575	Novice Rider First Ridden section 0-5 wins	\$5.00	PM: \$ 15, 10, 5
576	Open Rider First Ridden section	\$5.00	PM: \$ 15, 10, 5
577	Future Star - First Ridden	\$5.00	

Only to be entered if able to canter on the circle in company. Not a HOY qualifier class. Sponsored by Kaitere Farms, special sashes to 6th.

578	NZ RIDING PONY SOCIETY First Ridden Ponies, not exceeding 138cm	\$5.00	
-----	---	---------------	--

Riding Pony Society (INC), that is to have permanent registration number, be 138cm or under, and to be foaled in NZ. In accordance with the NZRP Society this class is judged under the criteria and standards of the NZRP. The emphasis is on Conformation and Paces, along with suitability, temperament, and safeness. This class is to be judged on the circle with no individual workout.



H O R S E S H O W I N G S E C T I O N

SHOWING ARENA 1 AND 3

“Golf Mania Paddock”

Saddle Hunter

HOY qualifier

- The Saddle Hunter shown under saddle should have bone, substance, be active and well-mannered with strong easy paces. It must be capable of carrying the rider for a long distance over varied country.
- Horses over 148cm.
- An exhibit may only be entered in the Show Hack or Park Hack or Riding Horse or Saddle Hunter section.
- An exhibit may only be entered in a Lady's or Gentleman's class - NOT BOTH.
- Horses will be required to gallop within the confines and constraints of the venue involved.

Thursday, 13 October 2022

Entry Fee Prize Money

Showing Arena 1

8 :30 AM	650	Novice Saddle Hunter 0-2 wins	\$8.00	PM: \$ 20, 15, 10
	651	Novice Saddle Hunter 0-5 wins	\$8.00	PM: \$ 20, 15, 10

CHAMPION NOVICE SADDLE HUNTER

To be judged from the winner of classes 650 and 651. Second placed hunter to the Champion to be judged alongside the remaining winner for Reserve.

RESERVE CHAMPION NOVICE SADDLE HUNTER

652	Novice Paced & Mannered Saddle Hunter 0-5 wins	\$8.00	PM: \$ 20, 15, 10
653	Open Saddle Hunter over 148cm & not exceeding 163cm	\$8.00	PM: \$ 20, 15, 10
654	Open Saddle Hunter over 163cm	\$8.00	PM: \$ 20, 15, 10
655	Open Lady's Saddle Hunter on Type (conformation class) - Lady or Gentleman Rider	\$8.00	PM: \$ 20, 15, 10
656	Open Gentleman's Saddle Hunter on Type (conformation class) - Lady or Gentleman Rider	\$8.00	PM: \$ 20, 15, 10

CHAMPION OPEN SADDLE HUNTER

To be judged from the winners of open classes only. Second placed horse to the Champion to be judged alongside the remaining winners for Reserve. Winner eligible for Supreme Champion Horse of the Show.

RESERVE CHAMPION OPEN SADDLE HUNTER

657	Open Paced & Mannered Saddle Hunter	\$8.00	PM: \$ 20, 15, 10
-----	-------------------------------------	---------------	-------------------

Winner eligible for Supreme Champion Paced & Mannered Horse of the Show.

Park Hack

FOLLOWS SADDLE HUNTERS (Same time as Hacks)

HOY qualifier

- A Park Hack should show quality, gaiety with very good paces. It must be well mannered and capable of giving its rider a pleasant and easy ride for a short journey.
- An exhibit may only be entered in the Show Hack or Park Hack or Riding Horse or Saddle Hunter section.
- An exhibit may only be entered in a Lady's or Gentleman's class - NOT BOTH.
- Classes may be combined if insufficient entries.

Showing Arena 1

610	Novice Park Hack over 148cm & not exceeding 158 cm 0-2 wins	\$8.00	PM: \$ 20, 15, 10
611	Novice Park Hack over 148cm & not exceeding 158cm 0-5 wins	\$8.00	PM: \$ 20, 15, 10

CHAMPION NOVICE PARK HACK

To be judged from the winners of classes 610 and 611. Second placed hack to the Champion to be judged alongside the remaining winner for Reserve.

RESERVE CHAMPION NOVICE PARK HACK

612	Novice Paced & Mannered Park Hack 0-5 wins	\$8.00	PM: \$ 20, 15, 10
-----	--	---------------	-------------------

613	Open Park Hack over 148cm & not exceeding 153cm	\$8.00	PM: \$ 20, 15, 10
614	Open Park Hack over 153cm & not exceeding 158cm	\$8.00	PM: \$ 20, 15, 10
615	Open Lady's Park Hack on Type (conformation class) Lady or Gentleman Rider	\$8.00	PM: \$ 20, 15, 10
616	Open Gentleman's Park Hack on Type (conformation class) - Lady or Gentleman Rider	\$8.00	PM: \$ 20, 15, 10

CHAMPION OPEN PARK HACK

To be judged from the winners of the open classes only. Second placed horse to the Champion to be judged alongside the remaining winners for Reserve. Winner eligible for Supreme Champion Horse.

RESERVE CHAMPION OPEN PARK HACK

617	Open Paced & Mannered Park Hack	\$8.00	PM: \$ 20, 15, 10
-----	---------------------------------	---------------	-------------------

Winner eligible for Supreme Paced & Mannered Horse of the Show

Hacks

FOLLOWS SADDLE HUNTERS (Same time as Park Hacks)

HOY qualifier

- A Hack should show quality, gaiety with very good paces. It must be well mannered and capable of giving its rider a pleasant and easy ride for a short journey.
- An exhibit may only be entered in the Show Hack or Park Hack or Riding Horse or Saddle Hunter section.
- An exhibit may only be entered in a Lady's or Gentleman's class - NOT BOTH.
- Classes may be combined if insufficient entries.

Showing Arena 3

620	Novice Hack over 158cm 0-2 wins	\$8.00	PM: \$ 20, 15, 10
621	Novice Hack over 158cm 0-5 wins	\$8.00	PM: \$ 20, 15, 10

CHAMPION NOVICE HACK

To be judged from the winners of classes 620 and 621. Second placed hack to the Champion to be judged alongside the remaining winners for Reserve.

RESERVE CHAMPION NOVICE HACK

622	Novice Paced & Mannered Hack 0-5 wins	\$8.00	PM: \$ 20, 15, 10
623	Open Hack over 158cm and not exceeding 163cm	\$8.00	PM: \$ 20, 15, 10
624	Open Hack over 163cm	\$8.00	PM: \$ 20, 15, 10
625	Open Lady's Hack on Type (conformation class) - Lady or Gentleman Rider	\$8.00	PM: \$ 20, 15, 10
626	Open Gentleman's Hack on Type (conformation class) - Lady or Gentleman Rider	\$8.00	PM: \$ 20, 15, 10

CHAMPION OPEN HACK

To be judged from the winners of open classes only. Second place horse to the Champion to be judged alongside the remaining winners for Reserve. Winner eligible for Supreme Champion Horse. Mrs E W White Perpetual Salve

RESERVE CHAMPION OPEN HACK

627	Open Paced & Mannered Hack	\$8.00	PM: \$ 20, 15, 10
-----	----------------------------	---------------	-------------------

Winner eligible for Supreme Champion Paced & Mannered Horse of the Show. Maungaparae Cup

Senior Rider

FOLLOWS HACK AND PARK HACK CLASSES

HOY qualifier

- Open to all riders, 17 years and over, on horses over 148cm.

Showing Arena 1

630	Novice Rider 17 years and over 0-5 wins	\$8.00	PM: \$ 20, 15, 10
631	Youth or Girl Rider 17 years and under 21 years	\$8.00	PM: \$ 20, 15, 10
632	Rider 21 years and over	\$8.00	PM: \$ 20, 15, 10

CHAMPION SENIOR RIDER

To be judged from winners of classes 630, 631 and 632. Second placed Rider to the Champion to be judged alongside the remaining winners for Reserve.

RESERVE CHAMPION SENIOR RIDER

Riding Horse

FOLLOWS SENIOR RIDER

HOY qualifier

- A Riding Horse is a Saddle Horse, which does not fit the criteria of a Show/Park Hack or Saddle Hunter but is of type between the three. It is a quality Show horse of excellent confirmation, soundness and manners with a free forward even pace with elegance and more bone and substance than a Show Hack, but less than a Saddle Hunter.
- Riding Horse to be judged on type and conformation 60%, manners and paces 40%.
- An exhibit may only be entered in the Show Hack or Riding Horse or Saddle Hunter section.
- An exhibit may only be entered in a Lady's or Gentleman's class - NOT BOTH.
- Horses will be required to gallop within the confines and constraints on the venue involved.
- The Novice status of the horse from previous Show Hack, Park Hack or Saddle Hunter competitions will apply to this 'Riding Horse' section.
- Classes may be combined if insufficient entries.

Showing Arena 1

640	Novice Riding Horse over 148cm 0-2 wins	\$8.00	PM: \$ 20, 15, 10
641	Novice Riding Horse over 148cm 0-5 wins	\$8.00	PM: \$ 20, 15, 10

CHAMPION NOVICE RIDING HORSE

To be judged from the winner of classes 640 and 641. Second placed horse to the Champion to be judged alongside the remaining winner for Reserve.

RESERVE CHAMPION NOVICE RIDING HORSE

642	Novice Paced & Mannered Riding Horse 0-5 wins	\$8.00	PM: \$ 20, 15, 10
643	Open Riding Horse over 148cm & not exceeding 163cm	\$8.00	PM: \$ 20, 15, 10
644	Open Riding Horse over 163cm	\$8.00	PM: \$ 20, 15, 10
645	Open Lady's Riding Horse on Type (conformation class) - Lady or Gentleman Rider	\$8.00	PM: \$ 20, 15, 10
646	Open Gentleman's Riding Horse on Type (conformation class) - Lady or Gentleman Rider	\$8.00	PM: \$ 20, 15, 10

CHAMPION OPEN RIDING HORSE

To be judged from the winners of the open classes only. Second placed Riding Horse to the Champion to be judged alongside the remaining winners for Reserve. Winner eligible for Supreme Champion Horse,

RESERVE CHAMPION OPEN RIDING HORSE

647	Open Paced & Mannered Riding Horse	\$8.00	PM: \$ 20, 15, 10
-----	------------------------------------	---------------	-------------------

Winner eligible for Supreme Champion Paced & Mannered Horse of the Show

RAS Livamol Series

FOLLOWS RIDING HORSE

HOY qualifier

- Ridden thoroughbred Show Horse over 148cm.
- Judging: 80% Conformation and 20% Paces & Manners.
- Judges will assess each horse when ridden then
- Judges to assess each horse individually with saddles removed.
- Horses to show true TB Qualities.
- Horses to show a good walk as well as gallop (room permitting).

Rules

1. Each competitor must annually, their registered thoroughbred with RAS head office (no fee required) prior to entering their first Livamol class.
2. If the rider/competitor changes then the thoroughbred must be re- registered with RAS with the new rider/competitor. A new number will be issued.
3. To register the Thoroughbred the horse must have an allocated Thoroughbred life number.
4. Each RAS (accepted) registered thoroughbred, will receive a RAS registration number - this number is to be entered onto the A&P Show's entry form (or online).
5. If no number is entered, entry will be deemed invalid, and no points will be allocated. Please note: Points are allocated per individual rider/competitor/horse.
6. Class to be judged: 80% confirmation 20% paces & manners.
7. Placings 1st to 4th will accumulate points that will result in an overall series winner - series will conclude at 2023 HOY. Any Livamol series held at shows after 2023 HOY will be points that can be carried through to next season – 2023.2024.

Showing Arena 1

600	RAS Livamol Thoroughbred Series Class - Ridden TB Show Horse (over 148cm)	\$8.00	PM: \$ 20, 15, 10
-----	---	---------------	-------------------

Supreme Awards - Horses

FOLLOWS RAS TB SERIES CLASS

Order of judging:

- Supreme Champion Paced & Mannered Horse of the Show - Winners of Open Paced & Mannered Horse classes.
- Supreme Champion Horse - To be judged from Champion Hack, Park Hack, Riding Horse and Saddle Hunter.

Showing Arena 1

SUPREME CHAMPION PACED & MANNERED HORSE OF THE SHOW

Garland kindly sponsored by the Hansen Family.

SUPREME CHAMPION HORSE

Garland kindly sponsored by the Harris Family.

Best Presented Showing Combinations

Rosette awarded to ten combinations entered in Thursday's Showing classes. Combination from any section, horse and/or pony.

Showing Arena 1

Best Presented Showing Combinations (10)

Local Showing Rider Most Points

Local junior and senior Showing Rider most points.

Showing Arena 1

Local Showing Junior Rider with most points

Award kindly sponsored by the Moss Family

Local Showing Senior Rider with most points

Award kindly sponsored by the Moss Family

Overall Awards

Best Pony of The Show

Local pony - Most points in all classes. Charlie Sheaff Cup

Most Points in Horse Section

Miller Trust Silver Challenge Cup

Most Points in Horse Jumping Section by Lady Rider

S D Nathan Cup

Champion Lady Rider of the Show

Most points in all open classes. Master Burleigh Trophy

Champion Horse of the Show

Most points in all open classes.



Rules for the Showing Section

All flat classes will be held in the Showing Arena (multiple rings will be operating) - Golf Mania paddock.

All jumping classes will be held in the Trust Tairawhiti Main Oval

Any enquiries to be directed to Jessie Bourke, jessie@logicfsl.co.nz.

Rules for the Showing Section, for all RAS classes - Showing, hunter jumping, working hunters

- Height certificates and novice cards **MUST** always be carried and presented on request, otherwise the exhibitor will not be allowed to start.
- Classification (section) nominated. Choice made by owners at the time of the horse/pony's first adult measure as to which classification they wish to show in. The classifications are as follows: Horse - Park Hack, Hack, Saddle Hunter, Riding Horse; Pony - Show Pony or Saddle Hunter Pony.
- Microchips do not exempt riders from a current height certificate.
- All competitors **MUST** wear numbers in the ring. It is the competitors' responsibility to supply their own numbers. This includes Working Hunter and Hunter Jumping for both horses and ponies (an armband numbers for these classes are acceptable and generally used at other A&P competitions/HOY for safety reasons). Numbers must be worn for in hand.
- A novice horse/pony/rider is one that has not yet had six wins in total in open and/or novice classes in any division within the competitions provided at any A&P Show. Once a horse/pony/rider has achieved the sixth win in a division the horse/pony/rider must then compete in the appropriate open classes.
- All novice wins (be they wins in a novice or open class) must be recorded on a current performance card and signed by the steward or judge.
- Any horse/pony which misbehaves to the extent that it unduly disturbs other competitors must leave the ring if asked to do so.
- Rings will not be held for riders who are competing in other sections/classes.
- All Novice pony classes are open to riders of any age, in novice pony classes only, except those special rules are in place for ridden stallions.
- Rider/Handler's age and eligibility is determined as per the 1 August 2021, i.e. Riders/handlers who are of age for any division/section on the 1 August complete the show year/season in that division/section.
- Please note times are approximate and we will try to start on time, but this is dependent on entry numbers.
- Showing section is run under RAS rules, and all current RAS rules apply as printed in the current RAS handbook. www.ras.org.nz
- On Thursday, the horse showing area is a large arena that can be split into two rings - 1 and 3.
- On Thursday pony showing area is a large arena that can be split into two rings – 2 and 4.
- It is compulsory that all Stallions/colts to be stabled in Stallion Boxes (see PB A&P Show rules, regulations, conditions and information page). Under no circumstances are they to be yarded in the ordinary yards or tied to floats or trucks. It is compulsory for all stallions and colts, except foals, to wear two (2) official 'S' identification badges, one attached to each side of their bridle, at all Shows/Events always. The rider/handler must also wear two RAS official (2) armbands (one on each arm) when in the ring. Handlers and Riders of stallions/colts must wear an approved Hi Viz vest at Shows/Events when outside the showing ring. All stallions and colts must be shown in a bit.
- In the sport horse/pony in-hand classes adults can lead ponies and children can lead horses (if they are able to safely remain in control for the duration of the class). No child is to led a horse or pony stallion/colt.

CLASSES/EVENTS: The starting order as set down in the catalogue is drawn by ballot and must be adhered to. All scratchings/class changes/late entries must be in writing at the Horse Secretary's office by 4.00pm the day prior. All competitors not appearing on time will be disqualified.

- At the time of print, NZ is Covid-19 Level 1 Orange Traffic Light system. Should this change, we will adhere to any Government regulations. Please follow the Facebook group 'Poverty Bay A and P Equestrian "Showies"' to keep up to date with the latest information.

PLEASE NOTE: (R51) It is compulsory that helmets are red tagged, conforming to the ESNZ or RAS requirements. Further information www.nzequestrian.org.nz. And www.ras.org.nz. Please note that as from 1 August 2023 new standards come in - helmets must have a yellow tag (not a red one).

Whisker and Ear Trimming - see regulations <https://www.ras.org.nz/whisker-and-inner-ear-trimming/>

T O M O R R O W ' S S T A R S

- Riders may ride either a pony or horse
- Combinations are not eligible to enter any other section of the Show
- No lead reins riders
- This section is aimed at riders and mounts attending pony club and other pleasure activities
- Riders will be asked to canter, so need to be able to do unassisted
- No spurs allowed, but a whip may be carried, which must not exceed 76cm in length
- PLEASE NOTE: (R51) It is compulsory that ALL helmets are red tagged, conforming to the ESNZ/RAS requirements. Further
- information www.nzequestrian.org.nz and www.ras.org.nz.
- Riders must be under 17 years of age (proof of age may be requested) as at the date of the Show, 13 October 2022.
- Ribbons 1st to 6th place.
- Classes may be combined if insufficient entries.

Thursday, 13 October 2022

Entry Fee Prize Money

Golf Mania Paddock

10:00 AM	700	Best presented pony/horse, rider 10 years and under	\$8.00	PM: \$ 20, 15, 10, 5
	701	Best walking pony/horse, rider 10 years and under	\$8.00	PM: \$ 20, 15, 10, 5
	702	Best trotting pony/horse, rider 10 years and under	\$8.00	PM: \$ 20, 15, 10, 5
	703	Pony/horse most suitable for a beginner, rider 10 years and under	\$8.00	PM: \$ 20, 15, 10, 5
	704	Best paced & mannered pony/horse, rider 10 years and under	\$8.00	PM: \$ 20, 15, 10, 5
	705	Best combination, rider 10 years and under	\$8.00	PM: \$ 20, 15, 10, 5
	706	Best rider 10 years and under	\$8.00	PM: \$ 20, 15, 10, 5
	707	Open pony/horse jump 50cm, rider 10 years and under	\$8.00	PM: \$ 20, 15, 10, 5

CHAMPION TOMORROW'S STARS

To be judged from winner of above classes 703, 704 and 705. Second placed ponies/horses to be judged alongside the remaining winners for Reserve Champion.

RESERVE CHAMPION TOMORROW'S STARS

10:00 AM	710	Best presented pony/horse, rider 11-16 years	\$8.00	PM: \$ 20, 15, 10, 5
	711	Best walking pony/horse, rider 11-16 years	\$8.00	PM: \$ 20, 15, 10, 5
	712	Best trotting pony/horse, rider 11-16 years	\$8.00	PM: \$ 20, 15, 10, 5
	713	Pony/horse most suitable for a beginner, rider 11-16 years	\$8.00	PM: \$ 20, 15, 10, 5
	714	Best paced & mannered pony/horse, rider 11-16 years	\$8.00	PM: \$ 20, 15, 10, 5
	715	Best combination, rider 11-16 years	\$8.00	PM: \$ 20, 15, 10, 5
	716	Best rider 11-16 years	\$8.00	PM: \$ 20, 15, 10, 5
	717	Open pony/horse jump 50cm, rider 11-16 years	\$8.00	PM: \$ 20, 15, 10, 5

CHAMPION TOMORROW'S STARS

To be judged from winner of above classes 713, 714 and 715. Second placed ponies/horses to be judged alongside the remaining winners for Reserve Champion.

RESERVE CHAMPION TOMORROW'S STARS

SUPREME CHAMPION TOMORROW'S STARS

To be judged from both Champions.



G I S B O R N E C A R R I A G E D R I V E R S

Friday, 14 October 2022

Entry Fee

NZCDS Harness Ring

	920	Gisborne Carriage Driving Day Fee	\$20.00
		<i>Entry for the day.</i>	
10:00 AM	921	Best Turned Out - Open	
	922	Concours d'elegance	
		<i>This class is designed to establish the most elegant turnout.</i>	
	923	Novice Harness Horse or Pony - Never to have won a first prize	
	924	Hackney - Style and Action - NB: Enter relevant height class for confirmation	
	925	Non Hackney 108cm and under - Paced & Mannered	
	926	Non Hackney 108cm and under - Confirmation	
		CHAMPION 108cm and under	
		RESERVE CHAMPION 108cm and under	
	927	Non Hackney over 108cm and not over 128cm - Paced & Mannered	
	928	Non Hackney over 108cm and not over 128cm - Confirmation	
		CHAMPION 108cm and not over 128cm	
		RESERVE 108cm and not over 128cm	
	929	Non Hackney pony and horse over 128cm - Paced & Mannered	
	930	Non Hackney pony and horse over 128cm - Confirmation	
		CHAMPION pony and horse over 128cm	
		RESERVE pony and horse over 128cm	
		SUPREME CHAMPION	
		<i>To be judged from the three champion winners. Garland presented to winner.</i>	
	931	Novice Driver (never to have won a driver class)	
	932	Open Driver	
	933	Scurry	
	934	Obstacle Show Driving	
		<i>The Scurry course will be driven with no time taken and the driver will be judged on the style and accuracy of their driving skills.</i>	



CARRIAGE DRIVING

Saturday, 15 October 2022

Entry Fee Prize Money

NZCDS Harness Ring

10:00 AM	821	Best Turned Out - Open	\$6.00	PM: \$ 15, 10, 6
	822	Concours d ' Elegance <i>This class is designed to establish the most elegant turnout. Trophies only.</i>	\$6.00	
	823	Novice Harness Horse or Pony: Never to have won a first prize.	\$6.00	PM: \$ 15, 10, 6
	824	Non Hackney 108cm and under - Open Pony	\$6.00	PM: \$ 15, 10, 6
	825	Non Hackney 108cm and under - Paced & Mannered	\$6.00	PM: \$ 15, 10, 6
		CHAMPION HARNESS COMBINATION		
		RESERVE CHAMPION HARNESS COMBINATION		
	826	Non Hackney Over 108cm and not over 128cm - Open Pony	\$6.00	PM: \$ 15, 10, 6
	827	Non Hackney Over 108cm and not over 128cm - Paced & Mannered	\$6.00	PM: \$ 15, 10, 6
		CHAMPION HARNESS COMBINATION		
		RESERVE CHAMPION HARNESS COMBINATION		
	828	Non Hackney over 128cm - Open Pony and horse	\$6.00	PM: \$ 15, 10, 6
	829	Non Hackney over 128cm - Paced & Mannered	\$6.00	PM: \$ 15, 10, 6
		CHAMPION HARNESS COMBINATION		
		RESERVE CHAMPION HARNESS COMBINATION		
	830	Hackney Style & Action <i>To compete in relevant height for Open Pony.</i>	\$6.00	PM: \$ 15, 10, 6
		SUPREME CHAMPION HARNESS COMBINATION <i>To be judged from all Champion winners.</i>		
	831	Novice Driver (never to have won a driver class)	\$6.00	PM: \$ 15, 10, 6
	832	Open Driver	\$6.00	PM: \$ 15, 10, 6
	833	Cone Driving 108cm and under	\$6.00	PM: \$ 15, 10, 6
	834	Cone Driving over 108cm	\$6.00	PM: \$ 15, 10, 6
	835	Obstacle Course 108cm and under	\$6.00	PM: \$ 15, 10, 6
	836	Obstacle Driving over 108cm	\$6.00	PM: \$ 15, 10, 6

