

## WHY WE'RE HERE

HE AHA TĀTOU I TŪ AI HEI RŌPU

### OUR PURPOSE

Showcasing Rural Excellence

### OUR VISION

Thriving, vibrant showing organisations connecting rural and urban communities

### OUR STORY

Established under Royal Charter through the Agricultural and Pastoral Societies Act 1908, the Royal Agricultural Society of New Zealand has celebrated agriculture and rural communities for nearly 100 years, with a number of shows well past their centenaries.

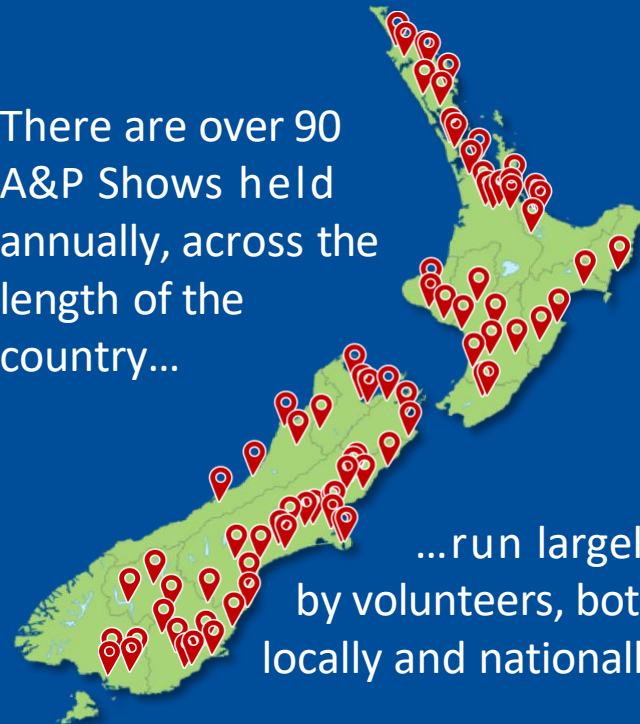


Collectively, and through our Member Organisations, we promote and demonstrate innovation in the agricultural space, while working to connect rural and urban communities and reaching hundreds of thousands of people each year.

## WHAT WE DO

HE AHA Ā TĀTOU MAHI

There are over 90 A&P Shows held annually, across the length of the country...



...run largely by volunteers, both locally and nationally

Our Act covers animals and birds including:



*and other kindred varieties.*

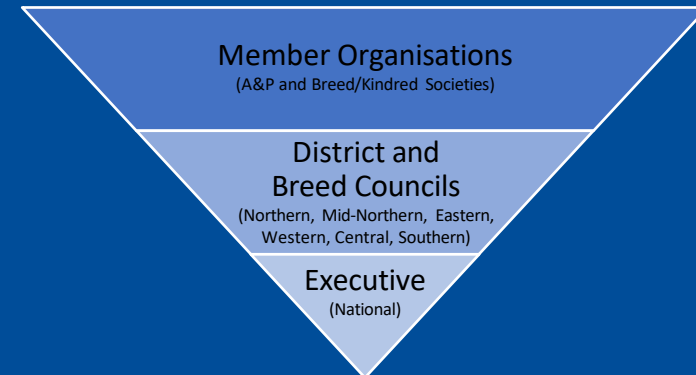
We also promote different industries (e.g. horticulture, viticulture) and home industries.

## HOW WE DO IT

HE PĒHEA E MAHIA AI E TĀTOU

### OUR STRUCTURE

We have a membership of 93 A&P Societies and 67 Kindred and Breed societies across the country, with six overarching districts, united breed councils, and a national executive (elected by members).



### OUR VALUES

- Respect
- Transparency
- Collaboration
- Passion

### OUR STRATEGIC PILLARS

- People and Volunteering
- A sustainable and relevant showing movement
- Support for our Member Organisations
- Telling our stories