



2025 EQUESTRIAN SCHEDULE



**POVERTY BAY A & P SPRING SHOW
FRIDAY 17 AND SATURDAY 18 OCTOBER 2025**

POVERTY BAY A&P SPRING SHOW

SHOWGROUNDS PARK, GISBORNE

15, 16, 17, 18 OCTOBER 2025

Showgrounds Park & Event Centre

20 Main Road, Makaraka, Gisborne

www.gisborneshow.co.nz entries@gisborneshow.co.nz

PO Box 2186, Gisborne 4040. Phone 068686084

Absolutely **NO DOGS** will be permitted on the grounds

SUNDAY 12TH October: Dressage

WEDNESDAY: In hand, AllBreeds, Christine Beatson Memorial.

THURSDAY: RAS Showing, Tomorrow's Stars, Show Jumping.

FRIDAY: RAS Pony Hunters, Show Jumping, Horse Show Hunters. SATURDAY: RAS Horse Hunters, Show Jumping, Pony Show Hunters.

JUDGES

Jumping

Mesdames Kaye Williams (President of the Ground Jury and Chief Steward), Carol Wawatai (Opotiki), Carol Mitchinson (Auckland), Charlie McKinnon, Annabel Parkes, Debbie Johnson, Sally Knight, and Mr Digby Spence

Show Hunters Showing

Mesdames Kaye Williams, Tryphena Carter (Gore), Megan Hawkins (Carterton), Bron Monckton (Marton), Eva Best (Wellington), Beverley Richards (Melbourne, Australia), and Carole Lindeman (Melbourne, Australia).

Tomorrow's Stars Course Designers

Mesdames Jo Emerre and Sara McNaught

Ring 1 Eryn Duffy (Southland)

Ring 2 Edward Bullock (Auckland)

Timekeepers Announcer

Carol Wawatai (Opotiki) and Sally Knight

Ring 1

ENTRIES CLOSE: 30 SEPTEMBER 2025

Late entries will incur a 50% penalty from closing date

Entry fees must be paid at time of entry

ABSOLUTELY NO entries will be accepted after 3 October

SPONSORED FEATURED EVENTS FOR 2025

	Prize pool
★ Property Brokers/East Coast Wools Ltd Horse Grand Prix	\$5,000
★ FEI World Challenge	\$1,100
★ AMS Saddlery Pony Grand Prix	\$850
★ FMG Young Rider	\$800
★ Mainland Coachwork Junior Rider	\$800
★ NZPH & A1 Equine Repro 7 year old Breeding	\$750
★ Christine Beatson Memorial Equitation	\$700
★ Hunter Jumping Open Hunter Jump	\$500
★ Showing - Best presented combinations (10)	Rosette
★ Showing - RAS Supreme (Supreme)	Sash and Medal
★ Showing - RAS Champion (Open Supreme)	Sash and Medal
★ Showing - RAS Reserve Champion (Open Reserve)	Sash
★ Tomorrow's Stars Show Jumpers - McNaught Cup	



POVERTY BAY A&P ASSOCIATION THANK OUR LOCAL SPONSOR OF THESE EVENTS

Covered yards

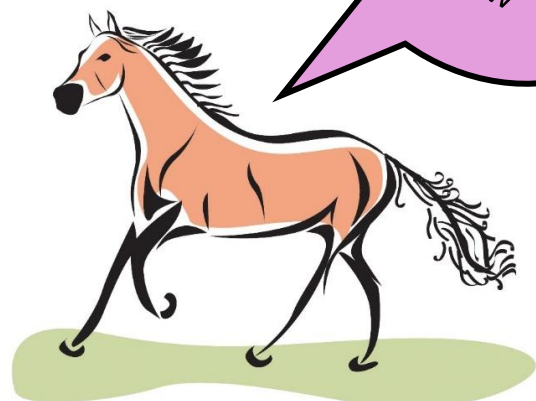
Limited numbers

See stabling next page!

Late entries

- 50% extra
- No covered yards
- No catalogue

Open yards
\$20 for Show



POVERTY BAY A&P SHOW RULES, REGULATIONS, CONDITIONS AND INFORMATION

(P13) LATE ENTRIES: Late entries will be accepted under the following conditions:

- 1 The competitor must have formally entered his/her participation in the Show prior to the entry closing date
- 2 The horse and/or pony for which an extra entry is sought must have entries recorded for that specific animal prior to the entry closing date
- 3 Any late entry shall incur a penalty of 50% of the prescribed entry fee for that event
- 4 Any such entries must be lodged at the Horse Secretary's office by 4pm on the day prior to the competition
- 5 Late entries under this clause shall be the first to compete in the class/classes for which they are late entered and shall be eligible for all the benefits relating to that class/classes

NOTE No late entries will be accepted from any competitors who have missed the closing date and have no prior entries lodged.

(P3) DOGS: NO dogs other than those officially entered in the scheduled competitions, shall be permitted on the grounds. This rule applies to EVERYONE entering the grounds. There shall be NO EXCEPTIONS!

STABLING

There are limited number covered yards - please read!

COVERED YARDS: Will be allocated after entries close, from the waitlist. If you are requesting a covered yard, you shall order and pay for an open yard and "tick" the request for a covered yard. Limited number of Showing covered yards. Thank you for your understanding.

Once entries have closed and stabling allocated via email, payment is required within 48 hours. If this is not received, the covered yard(s) will be re-allocated to the wait list.

Covered yards, stallion box, open yards – All covered yards will be issued on a performance basis. Covered yards, stallion boxes or open yards – per Show.

Covered yards: Per Show: \$45 - Wednesday, Thursday, Friday nights*

Stallion boxes: Per Show \$45 Compulsory for ALL stallions.

Open yards: Per Show \$20

No portable yards are allowed.

The above accommodation fees must be added to the entry fees. If for any reason the Association is unable to allocate your request, a refund will be payable. Please remove all string/bailing twine from yards and leave clean. NOTE: Once stabling has been allocated, NO REFUND will be payable for scratched equines that have NOT been officially notified prior to Monday of the Show.

CAMPING DURING THE SHOW: Camping fee \$15 per truck/float for the show will apply from Wednesday-Saturday for the Show. Power Points: \$35 for the show (Please note: limited connections). Power Points: All electrical cords plugged into the (facility) power boxes are required to be certified and have a visible tag showing. Cords will be checked and any that do not show certification tags will be removed. There is to be no tethering cords between trucks or other vehicles, and the organising committee will not accept any unsafe use of these electrical sites.

CAMPING PRIOR AND AFTER THE SHOW: There will be no admittance to the grounds before Monday prior to the Show for Equestrian competitors arriving prior to Wednesday. All ablution facilities will be available. The grounds must be vacated by Monday after the Show. A standard camping fee of \$15.00 per person per night will apply for Monday and Tuesday nights. Powered sites will be charged \$35. These fees are to be paid in advance with your entries. If you are arriving after daylight hours, please enter through Gate 1 – Main entrance only.

CATALOGUES: Prepaid catalogues are \$6.00, will be available from the Horse Secretary's office in the foyer of the GEC indoor arena from 2:00 pm Tuesday.

ENTRY, ENTRY FEES AND PRIZE MONEY: Ground Levy \$10/equine. Medical Levy \$15/rider. Are set out in this schedule. All entries [http:// www.main-events.com](http://www.main-events.com) with PoliPay. All fees must be paid at time of entry. A bank account number must be supplied with your entry, for prize money payments. Prize money will be paid by direct credit, within 21 days. Withholding tax: You are advised that the IRD deem the winner of prize money in excess of \$500.00 in any one class liable to pay withholding tax of 20% on the amount won in excess of the \$500.00 threshold. This applies to the Horse Grand prix 1st – 4th, please enter your IRD/GST number.

(P4) REFUNDS: The Committee will not accept claims for refunds of entry fees unless the scratching of an entry is made officially in writing to the secretary either prior to the Show or in sufficient time to avoid disruption to the smooth running of the competition. In the event of scratching(s) prior to the Show, a scratching fee of \$25.00 per equine, Doctor or Veterinary certificate is required. No refund of stabling or ground levy fees, if scratching made after Sunday prior to the Show.

ENTRY ACCEPTANCE: Entries are made and accepted subject to the Rules and Regulations of The Royal Agriculture Society of New Zealand (RAS – prefixed by the letter ‘R’) as amended in June 2019 and including the Definition of Terms, and/or of the Poverty Bay Agricultural & Pastoral Association (PB A&P Assn – prefixed by the letter ‘P’) as amended in June 2006. Copies of the Rules and Regulations are obtainable from the Secretary. As from June 2010 the ‘Yellow Card’ system will operate in Equestrian Section of all RAS affiliated Shows/Events. Implementation of the ‘Yellow Card’ will be in accordance with the RAS Rules and Regulations: www.ras.org.nz. Entries in Equestrian Sport New Zealand (ESNZ) classes are made and accepted subject to the Rules and Regulations of ESNZ, including the notification of official warning procedures ‘ESNZ Official Warning 2013’: www.nzequestrian.org.nz. All competitors shall be conversant with the rules and regulations, which are particular application to entries in all horse and pony classes.

(R51) SAFETY HELMETS: Wearing a hard hat is compulsory for anyone competing on, working in, or schooling or riding for any other reason an equine at the PB A&P Assn Showgrounds Park. It is compulsory that ALL helmets are yellow tagged, conforming to the RAS and ESNZ requirements (including carriage driving and Tomorrow’s Stars classes). Further information www.ras.org.nz and www.nzequestrian.org.nz. All competitors must be properly dressed in accordance with this Article 127 and Discipline Rules when appearing before spectators.

MEASURING RULES: That apply at this Show are those of the RAS. The steward in charge may at his discretion, transfer an equine to its appropriate class where it is found on being measured to be wrongly entered. Contact Peter Andrew 0274396737.

Height certificates and novice cards must be carried each at all times and be presented on request, otherwise the exhibitor will not be allowed to start.

(P10) STARTING TIMES: Starting times are approximate only but will be adhered to as closely as possible. Although it is provided that horses may compete in more than one class, any or all such classes may be judged simultaneously at the convenience of the judges or stewards. In all cases exhibitors having an exhibit entered into more than one class must elect in which class they compete.

JUMPING EVENTS: The starting order as set down in the catalogue is drawn by ballot and must be adhered to. All scratchings must be in writing at the Horse Secretary’s office by 4.00pm the day prior. All competitors not appearing on time will be disqualified.

(P2) ALTERATION TO PROGRAMME: The committee reserves the right to make any alteration in the Show timetable or to postpone the Show, or to withdraw any event, or to amend the conditions of entry into any event as may be deemed advisable.

(P6) ALTERATION TO COURSE: The committee reserve the right to make any alteration if a course is defined in any jumping event, without prior notice.

(P14) ALTERATION TO JUMPING HEIGHT CLASS ENTRIES: Competitors may transfer an entry to a different height class, under the following conditions: intended changes must be notified to the Horse Secretary in writing by 4.00pm on the day immediately prior to the event taking place and will compete first in the newly selected classes.

(P12) SUBSTITUTION FOR INJURY: Where an equine has been duly entered and catalogued in any class, the substitution of another equine shall not be permitted except in accordance with R58. All equines must be named at the time of entry.

(P11) SUBSTITUTION OF ENTRIES: (also refer R39) Substitutions in horse and pony classes will be permitted in writing to the Horse Secretary in time to avoid disruption to the running to the Show, and provided that: 1 The equine for which another entry is substituted may take no further part in the Show. 2 The substitute is of the same grade and/or class as the original entry. 3 Is owned by the same person.

(R89) FORBIDDEN SUBSTANCES: The use of tranquilizers, stimulants, or any drugs capable of affecting the performance of equines is forbidden. Competitors are advised that tests for forbidden substances may be carried out during the Show and that testing of all equines is at the owner’s risk. Testing for forbidden substances will be carried out under the Royal Agricultural Society Forbidden Substance Judicial Committee (FSJC) procedures and rules (refer rule 89 RAS Equestrian Judges and Competitors Rule Book and rules and by-laws of section 55(a) of the RAS general rules and regulations).

(P5) PROTESTS: (also refer R2) Any protest is to be lodged no later than 2 (two) hours after the completion of judging and must be lodged with the Secretary of the PB A&P Assn. Any protest is to be accompanied by a fee of \$50.00 which is refundable should the protest be upheld. The Judicial Committee shall comprise

the President, the Vice-President and the Chief Horse Steward, together with such additional persons as the President may appoint.

QUAD BIKES AND/OR ANY MOTORISED BIKES and or any motorised bikes. All riders must always wear a helmet. This is inclusive of pillion passengers. No more than one pillion passenger is allowed per bike. Speed is restricted to no more than 10kms per hour. All drivers of ANY bike must hold the appropriate licenses/endorsements to operate the vehicle. Any driver seen to behave contrary to this policy, to operate while under the influence of alcohol, allow pillions to ride in a dangerous manner or generally operate in an unsafe manner will mean their bike will be confiscated for the duration of the event and the offending driver removed from the event.

OFF LIMITS! All equestrian riders and supporters are advised that ALL trade areas, the windmill sideshow amusement park, the main camping ground and other areas are OFF LIMITS during the hours of darkness. You are asked to please stay within the confines of the horse lines after dark. Security personnel will be on the grounds, and this policy will be strictly enforced.

HEALTH & SAFETY

I declare that:

1 My accepted entry into the Event will not be transferred to another entrant.

2 In the event of any 'act of God' conditions causing a cancellation of the Event, I agree that my total entry fee is not transferable or refundable.

3 I and any horses or ponies I am riding are in an appropriate physical condition to participate in the Event, given the known parameters of the Event (such as the length, time, physical demands and environmental context).

4 I have taken medical advice on any pre-existing medical conditions and confirm that it is medically safe for me to participate in the Event.

5 I acknowledge that there are risks involved in the Event. I fully realise the dangers of participating in the Event, and fully assume the risks associated with my participation and my wellbeing and safety during and after the Event. I understand and acknowledge that the Event organisers (including all officials and event volunteers) provide no warranties, regarding my wellbeing and safety.

6 I understand and agree that situations may arise during the Event, which may be beyond the immediate control of the Event organisers (including all officials and event volunteers).

7 I will participate in the Event, in a manner that does not endanger either me or others.

8 I agree that to the extent permissible by law, the Event organisers (including all officials and event volunteers), the sponsors and other parties associated with the Event, have no liability to me whatsoever for any direct or indirect loss, (including, but not limited to injury or death) sustained by me during or in any way related to my participation in the Event.

9 I authorise the use of my name, voice, picture and information on this entry form in any broadcast, telecast, promotion, advertising, and in any other way, without payment to me or any other form of compensation.

10 I agree to comply with the rules, and regulations pertaining to the Event.

11 I agree to follow all reasonable safety instructions provided to me by the Event organisers, (including all officials and event volunteers) before, during and after the Event.

12 I consent to receiving medical treatment in the event of illness or injuries suffered during or immediately after the Event.

MEDIA: By entering or attending this competition, you accept that you may appear within differing media streams that are on location covering the event. Your behaviour at the event and within the competition arena is at your discretion and is your responsibility.

SHOW SPECIFIC CONDITIONS: I certify that I have read and understand the conditions of entry to this show as uploaded under the DOWNLOADS tab of our show page. I understand that it is my responsibility to verify that my entry has been received and accepted by the show concerned. Main-Events is not liable for any errors or omissions in the data provided to the show.

POVERTY BAY A&P ASSOCIATION HEALTH & SAFETY POLICY

Poverty Bay A&P Association is committed to providing and maintaining a safe and healthy event for all staff, and to providing the information, training and supervision needed to achieve this.

We will take all practical steps by:

- Providing a safe event, safe equipment and proper materials
- Identifying and monitoring hazards and using the hazard management hierarchy of eliminate, isolate or minimise
- Insist upon establishment of safe methods and best practices
- Comply with all Health and Safety (H&S) legislation, regulations and code of practise

We will take responsibility for health and safety procedures, however ALL PEOPLE ON THIS SITE need to be aware of their responsibility and comply with the event's health and safety policy. COMPETITORS will be responsible for themselves at ALL times by observing safe practices and rules/instructions relating to their competition.

Every person involved in the Poverty Bay A&P Show is encouraged to play a vital and responsible role in maintaining a safe and healthy event through:

- Being involved in the event health and safety system
- Following correct procedures
- Safe and proper use of equipment
- Wearing protective clothing and equipment as and when required
- Reporting any pain or discomfort as soon as possible
- Ensuring all accidents and incidents are reported
- Help new employees, trainees and visitors to understand the right safety procedures and why they exist.
- Informing the office immediately of any health and safety concerns
- Keeping the event facilities tidy to minimise the risk of any trips and falls

BLUE CARD PROCESS:

ESNZ's Blue card process has been developed to keep riders safe and support officials in their duty of care:

- Officials can exclude a rider from participating in a competition or entire event by issuing a Blue Card because the rider received a serious injury, including concussion or suspected concussion.
- If a rider issued with a Blue Card at an event refuse to withdraw from the event, this may result in disciplinary action taken through the disciplinary process as set out in ESNZ general regulations.
- The Blue Card notice is logged on a rider's profile on ESNZ database.
- A Blue Card means that a rider is stood down from all riding activities until clearance from a registered GP or a registered medical specialist can be obtained.
- If a rider has been issued with a Blue Card competes without first providing medical clearance, this may result in disciplinary action been taken thru the ESNZ disciplinary process set out in ESNZ general regulations.

RAS FALL OF RIDER:

- GR8 - If a rider has a fall or suspected head injury, at any time at a RAS affiliated Show/Event in the: competition ring/arena, practise/warmup/collecting ring/arena; or elsewhere within the grounds of where the show/event is be convened, the rider must be removed from the activity and checked by the show/event's nominated First Aid service/personnel and be given the 'all-clear' before the rider is permitted to re-mount and continuing riding at the show/event.

For any information on health and safety at any time, please call Equestrian Health & Safety officer: Jessie Bourke, mobile 0273667321



ORDER OF SCHEDULE OF CLASSES

- ❖ Dressage (Sunday 12th October)
- ❖ Show Jumping (Thursday, Friday, Saturday)
- ❖ Show Hunter
 - Friday Horses
 - Saturday Ponies
- ❖ In hand and AllBreeds (Wednesday)
- ❖ Christine Beatson Memorial Equitation (Wednesday)
- ❖ Showing (Thursday)
- ❖ Working Hunters, Hunter Jumping, Showing Conditions
 - Friday Ponies
 - Saturday Horses
- ❖ Tomorrow's Stars
 - Thursday
 - Friday



Enter
our show
online at

Main-Events
www.main-events.com

150

YEARS



D R E S S A G E

SUNDAY, 12 October 2025

Golf Mania & GEC Indoor Arena

Dressage entries www.evoevents.co.nz

NO late entries accepted in Dressage Section

NON-GRADED SECTION – Classes 100-113 Horses & Ponies (restricted to two tests per combination)

- Riders must have either a current full or Introductory membership with ESNZ or pay a casual day membership fee (\$16.30)
- Horses/ponies may be unregistered, or ESNZ registered for introductory or graded competitions AND not have won more than 15 Elementary or above grading points.
- Classes 100-103 are open to CN riders (newcomer riders who have never earned grading points at any level at any time in their life).
- Classes 104-107 are open to CN-C3 riders (riders who have never earned grading points at any level above Elementary and riders who have ridden at ESNZ Intermediate Horse Trials).
- Combinations outside the above criteria may compete HC.

		<u>Entry Fee</u>	<u>Prize Money</u>
100	Introductory A (CN Riders 16 & under as at 1.8.23)	\$12	Ribbons
101	Introductory B (CN Riders 16 & under as at 1.8.23)	\$12	Ribbons
102	Introductory A (CN Riders 17 & over as at 1.8.23)	\$12	Ribbons
103	Introductory B (CN Riders 17 & over as at 1.8.23)	\$12	Ribbons
104	Introductory C (CN-C3 Riders 16 & under as at 1.8.23)	\$12	Ribbons
105	Introductory D (CN-C3 Riders 16 & under as at 1.8.23)	\$12	Ribbons
106	Introductory C (CN-C3 Riders 17 & over as at 1.8.23)	\$12	Ribbons
107	Introductory D (CN-C3 Riders 17 & over as at 1.8.23)	\$12	Ribbons
108	Non-Graded Preliminary 1A (horses and ponies)	\$12	Ribbons
109	Non-Graded Preliminary 1D (horses and ponies)	\$12	Ribbons
110	Non-Graded Novice 2A (horses and ponies)	\$12	Ribbons
111	Non-Graded Novice 2C (horses and ponies)	\$12	Ribbons
112	Non-Graded Elementary & above "A" test <i>*Please indicate level</i>	\$12	Ribbons
113	Non-Graded Elementary & above "C" test <i>*Please indicate level</i>	\$12	Ribbons

GRADED SECTION - Classes 114-126 (restricted to two tests per combination)

- Preliminary Level – Riders must have a current ESNZ Introductory or full competitive membership. Novice Level and above - Riders must have a current ESNZ full membership.
- Horse/ponies must have a current ESNZ registration and also may compete on an annual dressage start (purchased on Horse reg) or use Flexi start at \$5 per test (payable with entries).
- Graded combinations must achieve a grade-able percentage (57%) to be eligible for prize money and Poverty Bay A&P Association dressage awards.
- Most points for local combination (graded horse classes) - **ANN SHERRIFF MEMORIAL CUP**
- Supreme Dressage Award - **RC MURPHY SILVER ROSEBOWL**

		<u>Entry Fee</u>	<u>Prize Money</u>
114	Pony Preliminary 1A	\$14	PM: \$ 20, 15, 10, Ribbon
115	Pony Preliminary 1D	\$14	PM: \$ 20, 15, 10, Ribbon
116	Pony Novice 2A	\$14	PM: \$ 20, 15, 10, Ribbon
117	Pony Novice 2C	\$14	PM: \$ 20, 15, 10, Ribbon
118	Preliminary 1A	\$14	PM: \$ 20, 15, 10, Ribbon
119	Preliminary 1D	\$14	PM: \$ 20, 15, 10, Ribbon
120	Novice 2A	\$14	PM: \$ 20, 15, 10, Ribbon
121	Novice 2C	\$14	PM: \$ 20, 15, 10, Ribbon
122	Novice musical freestyle	\$14	PM: \$ 20, 15, 10, Ribbon
123	Elementary 3C	\$14	PM: \$ 20, 15, 10, Ribbon
124	Elementary musical freestyle	\$14	PM: \$ 20, 15, 10, Ribbon
125	Medium and above "C" test <i>*Please indicate level</i>	\$14	PM: \$ 20, 15, 10, Ribbon
126	Medium and above musical freestyle* <i>*Please indicate level of freestyle</i>	\$14	PM: \$ 20, 15, 10, Ribbon

EVENT FEES

Evo Fee	\$1.70 per class
Admin	\$15 per rider
Yard Fee	\$5 per horse/pony

J U M P I N G

Jumping

This is a Grand Prix Show

- Equines may only enter two (2) jumping classes on Thursday, Friday and Saturday of the Show.
- Ponies entering in the Grand Prix may not enter classes below 1.10 metre.
- All series classes will be run under the national series conditions.
- (P2) Alteration to programme. The Committee reserves the right to make any alteration to the programme.
- Entry acceptance. The Committee reserves the right to refuse any entries.

ESNZ Membership and Registration

- All riders must have FULL ESNZ membership to compete in jumping/show hunter classes. Introductory members or casual members Casual Rider (\$16.30) may only compete in introductory classes (ponies 80cm and below; horses 90cm and below).
- All equines must have FULL ESNZ registration, and a paid annual jumping/show hunter start to compete in ANY series class.
- Equines not registered may use the jumping/show hunter discipline ESNZ Casual Equine Levy (\$5.15/show)/Discipline Flexi-start (\$25/show). Height restrictions apply horses 1.10m maximum; ponies 1.00m maximum, cannot compete in series classes.
- All equines jumping/show hunter levy is compulsory (\$8.50/show).

Thursday, 16 October 2025

9:00 am

Ring 1 Farmers Transport Ltd

			<u>Entry Fee</u>	<u>Prize Money</u>
9 :00 AM	304	Open Horse 1.10m Two phase Art 274 2.5.1 (special two phase)	\$10.00	PM: \$ 60, 40, 20, 15, 10
	305	Open Horse 1.15m Art 274 2.5.1 (special two phase)	\$10.00	PM: \$ 60, 40, 20, 15, 10
	306	Open Horse 1.20m Art 274 2.5.1 (special two phase)	\$12.00	PM: \$ 70, 50, 40, 30, 12, 12, 12
	307	Open Horse 1.30m Art 238.2.2	\$15.00	PM: \$ 100, 70, 50, 40, 30
	308	Open Horse 1.40m Art 238.2.2	\$25.00	PM: \$ 250, 150, 100, 60, 40
	309	Open Pony 1.10m Art 274 2.5.1 (special two phase)	\$7.00	PM: \$ 35, 25, 15, 10
	310	Open Pony 1.15m-1.20m Art 238.2.2	\$10.00	PM: \$ 60, 40, 30, 20
		<i>1.15m ponies to jump first, followed by 1.20m ponies. Then 1.15m ponies jump-off, followed by 1.20m ponies jump-off.</i>		

Ring 2 LeaderBrand Produce Ltd

8:30 am

8 :30 AM	311	FEI World Jumping Challenge Art 273.3.3.2	\$50.00	PM: \$400, 300, 200, 100, 50, 50
	312	Intro Pony 70cm A1 (1 round) Art 238 1.1	\$5.00	PM: \$ 50
	313	Intro Pony 80cm A1 (1 round) Art 238 1.1	\$5.00	PM: \$ 50
	314	Open Pony 90cm Art 274 2.5.1	\$8.00	PM: \$ 30, 20, 15, 10
	315	Open Pony 1.00m Art 274 2.5.1	\$8.00	PM: \$ 30, 20, 15, 10
	316	Open Pony 1.05m Art 274 2.5.1 (special two phase)	\$8.00	PM: \$ 30, 20, 15, 10
	317	Intro Horse 80cm Art 238 1.1 (1 round)	\$8.00	PM: \$ 50
	318	Intro Horse 90cm Art 274 2.5.1	\$8.00	PM: \$ 90
	319	Open Horse 1.00m Art 274 2.5.1 (special two phase)	\$10.00	PM: \$ 50, 35, 20, 15
	320	Open Horse 1.05m Art 274 2.5.1 (special two phase)	\$10.00	PM: \$ 50, 35, 20, 15

Friday, 17 October 2025

8:30 am

Ring 1 Farmers Transport Ltd

8 :30 AM	321	Open Pony 1.15m - 1.20m Art 238 2.2	\$10.00	PM: \$ 60, 40, 30, 20
		<i>1.15m ponies to jump first, followed by 1.20m ponies. Then 1.15m ponies jump-off, followed by 1.20m ponies jump-off.</i>		
	322	DUNSTAN HORSEFEEDS Amateur Rider Series 1.10m-1.20m Art 238 2.2	\$15.00	PM: \$ 100, 70, 50, 30, 25, 25
	323	Open Horse 1.20m Art 238.2.2	\$20.00	PM: \$ 150, 100, 60, 40, 30
	324	MAINLAND COACHWORK Junior Rider Series with equitation 1.15m - 1.25m Art 238 2.2	\$30.00	PM: \$ 200, 180, 130, 100, 80, 60
	325	THE BRAVE PANTS COMPANY Pro Amateur Series 1.20m - 1.30m Art 238 2.2	\$15.00	PM: \$ 150, 70, 50, 30, 25, 25
	326	NZPH & A1 EQUINE REPRO 7-Year Old Breeding Series 1.30m Art 238 2.2	\$30.00	PM: \$ 200, 180, 130, 100, 80, 60
	327	FMG Young Rider Series 1.25m - 1.35m Art 238 2.2	\$30.00	PM: \$ 250, 180, 130, 100, 80, 60
	328	Open Horse 1.35m Accumulator with optional Joker Art 269	\$25.00	PM: \$ 250, 150, 100, 60, 40

Ring 2 LeaderBrand Produce Ltd

8 :30 AM	329	Intro Horse 90cm Art 238 1.1 (1 round)	\$10.00	PM: \$ 43.33
	330	Open Horse 1.00m Two phase Art 274 1.5.2	\$10.00	PM: \$ 50, 35, 20, 15
	331	Open Horse 1.10m Two phase Art 274 1.5.3	\$12.00	PM: \$ 70, 50, 30, 20, 10
	332	Intro Pony 80cm Two Phase Art 274 1.5.3	\$8.00	PM: \$ 16.66
	333	Open Pony 90cm Two phase Art 274 1.5.3	\$8.00	PM: \$ 30, 20, 15, 10
	334	Open Pony 1.00m Two phase Art 274 1.5.3	\$8.00	PM: \$ 35, 25, 15, 10
	335	Open Pony 1.10m Two phase Art 274 1.5.3	\$8.00	PM: \$ 35, 25, 12.5, 12.5

Saturday, 18 October 2025

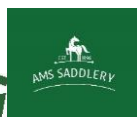
8:30 am

Ring 1 Farmers Transport Ltd

8 :30 AM	336	Open Horse Classic 1.15m Art 238.2.2	\$15.00	PM: \$ 100, 75, 40, 25, 15
	337	Open Horse Classic 1.20m Art 238.2.2	\$18.00	PM: \$ 125, 90, 50, 40, 30
	338	Open Horse Classic 1.25m Art 238.2.2	\$20.00	PM: \$ 150, 100, 60, 40, 30
	339	Open Horse Classic 1.35m Art 238.2.2	\$35.00	PM: \$ 350, 250, 200, 150, 100, 100
	340	AMS SADDLERY Pony Grand Prix 1.20m-1.30m Art 261 5.1.2	\$25.00	PM: \$ 250, 200, 150, 110, 80, 60
		<i>Lawson Candy Memorial Challenge Cup</i>		
	341	PROPERTY BROKERS Horse Grand Prix Series in conjunction with EAST COAST WOOLS LTD 1.40m-1.50m Art 261 5.1.1	\$75.00	PM: \$ 1500, 1025, 600, 475, 375
	344	NZ WARBLOOD ASSOCIATION 6-Year-Old Breeding Series 1.20m Art 238.1.1 <i>GO & RB Hansen Memorial Prize and Hikurangi Memorial Cup</i>	\$15.00	PM: \$ 350

Ring 2 LeaderBrand Produce Ltd

8 :30 AM	342	EAST COAST PERFORMANCE HORSES 5 Year Old Breeding Series 1.10m Art 238 1.1	\$12.00	PM: \$ 250
	343	Open Horse 1.10m Art 238.2.2 Instant JO	\$10.00	PM: \$ 70, 50, 30, 20, 10
	345	Open Horse 90cm Art 238 2.2 Instant JO	\$10.00	PM: \$ 70, 50, 30, 20, 10
	346	Open Horse Classic 1.00m Art 238 2.2 Instant JO	\$10.00	PM: \$ 70, 50, 30, 20, 10
	347	Open Pony 85cm Art 238 2.2	\$6.00	PM: \$ 30, 20, 15, 10
	348	Open Pony 95m Art 238 2.2	\$7.00	PM: \$ 35, 25, 15, 10
	349	Open Pony Classic 1.05m Art 238 2.2	\$10.00	PM: \$ 70, 50, 30, 20, 10
	350	Open Pony Classic 1.10-1.15m Art 238 2.2	\$10.00	PM: \$ 70, 50, 30, 20, 10



S H O W H U N T E R S

Show Hunter Ponies

- Practise rounds will be held on Friday, at the completion on horse Show Hunters.
- \$5.00 per pony, 2 rounds maximum. Striding will be set on the Category A strides and height.

Category A, then Category B, then Category C

- Pony riders can only enter and compete in ONE equitation class. Either the pony rider equitation series 80cm OR BOP & WAIKATO SH GROUPS pony rider 12 years and under Rider Equitation Series class 70cm.
- Equines competing under the casual jumping/show hunter may start in HOY qualifying classes, but they will not gain any HOY points, and are unable to start in any show hunter series classes.
- Riders must have a fully paid ESNZ riders' membership to compete in ANY show hunter recognised classes.
- All show hunter classes will be run under ESNZ Show Hunter Rules V18 2025 and ESNZ Show Hunter Equitation Series Conditions 2025.

ESNZ Membership and Registration

- All riders must have the correct and fully ESNZ rider membership to compete in jumping/show hunter classes. Introductory members or casual membership (\$16.30/day) may only compete in introductory classes (ponies 80cm and below; horses 90cm and below).
- All equines must have a FULL ESNZ registration, and a paid annual jumping/show hunter start to compete in ANY series class.
- Equines not registered may use the jumping/show hunter Discipline Flexi-start (\$25/Show). Height restrictions apply horses 1.10m maximum; ponies 1.00m maximum, cannot compete in series classes. If not registered with ESNZ, then the ESNZ casual equine \$5.15 is also required; ESNZ casual rider \$16.30/show; Jumping Levy \$8.50/show compulsory.
- Ponies may only enter in their correct height category for High Points classes only. Please refer to the Show Hunter Rule book. <https://www.nzequestrian.org.nz/wp-content/uploads/FINAL-SH-Rules-2025-Clean.pdf>
- Pony riders MUST carry a valid height certificate.
- All Series classes run under national series conditions.
- Part of the E.J. Gordon Livestock Open Horse and Pony Show Hunter Series, and the "LP" Introductory Horse series sponsored by the Harris Family.

Saturday, 18 October 2025

8:30 am

GEC Indoor Arena

Entry Fee Prize Money

Category A

8 :30 AM	220	HOYQ Open Welcome Hunter Pony 60cm Category A	\$8.00	PM: \$ 25, 20, 12, 8
	221	HOYQ Open Pony Hunter 70cm Cat A	\$8.00	PM: \$ 25, 20, 12, 8
	222	VERO INSURANCE Cat A National Series HOYQ 70cm Cat A	\$8.00	PM: \$ 25, 20, 12, 8
	223	BOP & WAIKATO SH GROUPS 12 years and under Rider Equitation Series (see conditions) 70cm	\$8.00	PM: \$ 25, 20, 12, 8

Category B

	224	HOYQ Open Welcome Hunter Pony 70cm Cat B	\$8.00	PM: \$ 25, 20, 12, 8
	225	HOYQ Open Pony Hunter 80cm Cat B	\$8.00	PM: \$ 25, 20, 12, 8
	226	GRAINS & GAINS Cat B National Series HOYQ 80cm Cat B	\$8.00	PM: \$ 25, 20, 12, 8

Category C

	227	HOYQ Open Welcome Pony Hunter 80cm Cat C	\$8.00	PM: \$ 25, 20, 12, 8
	228	Pony Rider Equitation Series 80cm Cat C	\$8.00	PM: \$ 25, 20, 12, 8
	229	HOYQ Open Pony 90cm Cat C	\$8.00	PM: \$ 25, 20, 12, 8
	230	THE BRAVE PANTS COMPANY Cat C National Series HOYQ 90cm Cat C	\$8.00	PM: \$ 25, 20, 12, 8

CHAMPION SHOW HUNTER PONY

Each award to the highest score in the following classes: 222, 226, 230.

RESERVE CHAMPION SHOW HUNTER PONY

Each award to the second highest score in the following classes: 222, 226, 230.

Show Hunter Horses

- Practise rounds will be held on Thursday 3.30pm-5.00pm. \$5.00 per horse, 2 rounds maximum. Height 70cm.
- All Series classes will be run under national series conditions.

ESNZ Membership and Registration

- Equines competing under the Casual jumping/show hunter levy may start in HOY qualifying classes, but they will not gain HOY points, and are unable to start in any show hunter series classes.
- Riders must have the correct and fully paid ESNZ rider membership to compete in ANY show hunter classes.
- All Show Hunter classes will be run under ESNZ Show Hunter Rules V18 2025 and ESNZ Show Hunter Equitation Series Conditions 2025.
- The "LP" Introductory series is sponsored by the Harris Family; and E.J. Gordon Livestock sponsor the Open Horse and Pony Show Hunter Series.
- Riders and equines not registered with ESNZ are able to compete in Introductory classes but must pay the required casual day
- Discipline Flexi-start \$25/show, ESNZ casual equine \$5.15, ESNZ casual rider \$16.30/day, ESNZ jumping levy \$8.50/show.

Friday, 18 October 2024

9:00 am

GEC Indoor Arena

			<u>Entry Fee</u>	<u>Prize Money</u>
9 :00 AM	210	Introductory (no HOYQ points) "LP" 70cm	\$5.00	PM: \$ 10, 8, 5
	211	Introductory (no HOYQ points) "LP" 80cm	\$5.00	PM: \$ 10, 8, 5
	212	Introductory (no HOYQ points) "LP" 90cm	\$5.00	PM: \$ 10, 8, 5
	213	HOYQ Open Welcome Hunter 90cm	\$10.00	PM: \$ 35, 25, 15, 10
	214	HOYQ Open Hunter 1.00m	\$10.00	PM: \$ 35, 25, 15, 10
	215	Junior National Series HOYQ 1.00m	\$10.00	PM: \$ 35, 25, 15, 10
	216	Amateur Hunter National Series HOYQ 1.00m	\$10.00	PM: \$ 35, 25, 15, 10
	217	SEAHORSE SUPPLEMENTS Open Equitation Series 1.00m	\$10.00	PM: \$ 35, 25, 15, 10
	218	NRM Open Horse National Series HOYQ 1.10m	\$12.00	PM: \$ 50, 40, 30, 20

CHAMPION SHOW HUNTER

Winner of class 218.

RESERVE CHAMPION SHOW HUNTER

2nd placegetter of class 218.



Equestrian Apparel



I N H A N D , A L L B R E E D S .
C H R I S T I N E B E A T S O N
M E M O R I A L E Q U I T A T I O N
W E D N E S D A Y C L A S S E S

RAS Led Pony

- Ponies in this section should show conformation and suitability as a ridden pony.
- Ponies must have a current RAS height certificate.
- Numbers are to be worn (armband numbers are acceptable).

Wednesday, 15 October 2025

8:30 am

Showing Arena 4

			<u>Entry Fee</u>	<u>Prize Money</u>
8 :30 AM	1060	Best Presented Led Pony	\$5.00	PM: \$ 15, 10, 5
	1061	Adult Male, 4 years and over, not exceeding 148cm	\$5.00	PM: \$ 15, 10, 5
	1062	Adult Female, 4 years and over, not exceeding 148cm	\$5.00	PM: \$ 15, 10, 5

CHAMPION LED PONY

To be judged from the winners of classes 1061 and 1062. Second place to the Champion to be judges alongside the remaining winners for Reserve.

RESERVE CHAMPION LED PONY

	1063	Foal or Yearling, not exceeding 140cm	\$5.00	PM: \$ 15, 10, 5
	1064	Pony, 2 years, not exceeding 146cm and Pony, 3 years, not exceeding 148cm	\$5.00	PM: \$ 15, 10, 5

YOUNG STOCK (LED PONIES) CHAMPION

To be judged from the winners of classes 1063 and 1064. Second place to the Champion to be judges alongside the remaining winners for Reserve.

YOUNG STOCK (LED PONIES) RESERVE CHAMPION

NZ Riding Pony Society

FOLLOWS RAS LED PONY

Entrants in these classes may be of show pony type/saddle hunter pony type/Pony Led class. The emphasis when judging these entrants is first and foremost quality confirmation (as pertaining to the Show Pony type or the Show/Saddle Hunter-type Riding Pony) and soundness (80%). Quality movement (in relation to type) combined with manners benefiting an animal bred to be a child's mount complete the criteria of a winning entrant (20%). Working entrants on the circle along with the opportunity to view the 'straightness' of each entrant's action is adequate. No workout is required. Entrants may be 'stripped' of their saddles.

- Entrants in this class may be of show pony type or show/saddle hunter type pony.
- To be eligible for these classes the Pony must be fully registered with the NZ Riding Pony Society (Inc), that is to have permanent registration number. Be 148cm or under, and to be foaled in New Zealand.
- The Pony must be ridden by a rider under the age of 17 years.
- Permanent Registration Number (NZRP) must be stated on the entry form.
- If it is subsequently found that the winner is not registered with the Society, they will be required to forfeit this award.
- The NZ Riding Pony Society NZ has donated special sashes for the following class.
- Winner must be able to show the ring steward their registration certificate before receiving the sash.
- Refer to page 14 for the NZ Riding Pony Society Rules.

NZRPS classes sponsored by halter sash for 1st place and 2nd-4th sashes by NZ RIDING PONY SOCIETY

543	NZ RIDING PONY SOCIETY Pony Led Class	\$5.00
-----	---------------------------------------	---------------

Pony must be fully registered with the NZ Riding Pony Society (INC), that is to have permanent registration number, be 148cm or under, and to be foaled in NZ. NZRP will provide a Halter Sash for 1st place and 2nd-4th sashes.

RAS Led Horse

- Horses in this section should show conformation and suitability as a ridden horse.
- Horses must have a current RAS height certificate.
- Numbers are to be worn (armband numbers are acceptable).

Led Horse classes are sponsored by CLUNBURY STABLES

Showing Arena 4

1070	Best Presented Led Horse	\$5.00	PM: \$ 15, 10, 5
1071	Adult Male, 4 years and over, over 148cm	\$5.00	PM: \$ 15, 10, 5
1072	Adult Female, 4 years and over, over 148cm	\$5.00	PM: \$ 15, 10, 5

CHAMPION ADULT LED HORSE

To be judged from the winners of classes 1071 and 1072. Second place to the Champion to be judges alongside the remaining winners for Reserve.

RESERVE CHAMPION ADULT LED HORSE

1073	Foal or yearling to mature over 148cm	\$5.00	PM: \$ 15, 10, 5
1074	Two year old, to mature over 148cm and three year old, to mature over 148cm	\$5.00	PM: \$ 15, 10, 5

CHAMPION YOUNG STOCK LED HORSE

To be judged from the winners of classes 1073 and 1074. Second place to the Champion to be judges alongside the remaining winners for Reserve.

RESERVE CHAMPION YOUNG STOCK LED

Led Sport Horse and Pony

FOLLOWS RAS LED HORSE IN HAND

- Horses over 148cm
- Ponies not exceeding 148cm (height certificate strongly advised)
- A youngstock exhibit may only be entered in the Pony or the Horse youngstock section (not both)
- All stallions/colts MUST be shown in a bit
- All Horses or Ponies 3 years or over MUST be shown in a bit
- Numbers must be worn (armband numbers are acceptable).
- A Stallion area will be clearly marked out on the grounds beside the ring for the in-hand section. This is for stallions and their handlers (both handlers) ONLY. Please email admin@bourkesafe.co.nz to notify of stallions for in-hand classes.
- There will be further information to pass on regarding how the classes will be run for stallion exhibitions.
- Stallions are not permitted to be in classes 460-463.

Showing Arena 4

450	Horse (Youngstock and Adult) in hand Best Presented	\$5.00	PM: \$ 15, 10, 5
451	Horse Colt or Gelding - 3 years and under (to mature over 148cm)	\$5.00	PM: \$ 15, 10, 5
452	Horse Filly 3 years and under, suitable to breed sport horses (to mature over 148cm)	\$5.00	PM: \$ 15, 10, 5

CHAMPION YOUNGSTOCK IN HAND SPORT HORSE

To be judged from the winner of classes 451 and 452. Second place horse to the Champion to be judged alongside the remaining for Reserve. Winner eligible for Supreme Champion in hand Sport Horse/Pony of the Show.

RESERVE CHAMPION YOUNGSTOCK IN HAND SPORT HORSE

453	Horse Stallion or Gelding 4 years and over (over 148cm)	\$5.00	PM: \$ 15, 10, 5
454	Horse Mare 4 years and over - suitable to breed sport horses (over 148cm)	\$5.00	PM: \$ 15, 10, 5

CHAMPION ADULT IN HAND SPORT HORSE

To be judged from the winner of classes 453 and 454. Second place horse to the Champion to be judged alongside the remaining for Reserve. Winner eligible for Supreme Champion in hand Sport Horse/Pony of the Show.

RESERVE CHAMPION ADULT IN HAND SPORT HORSE

455	Pony (Youngstock and Adult) in hand Best Presented	\$5.00	PM: \$ 15, 10, 5
456	Pony Colt or Gelding - 3 years and under (not exceeding 148cm at maturity)	\$5.00	PM: \$ 15, 10, 5
457	Pony Filly 3 years and under - suitable to breed sport horses (not exceeding 148cm at maturity)	\$5.00	PM: \$ 15, 10, 5

CHAMPION YOUNGSTOCK IN HAND SPORT PONY

To be judged from the winner of classes 456 and 457. Second place pony to the Champion to be judged alongside the remaining for Reserve. Winner eligible for Supreme Champion in hand Sport Horse/Pony of the Show.

RESERVE CHAMPION YOUNGSTOCK IN HAND SPORT PONY

458	Pony Stallion or Gelding 4 years and over (not exceeding 148cm)	\$5.00	PM: \$ 15, 10, 5
459	Pony Mare 4 years and over - suitable to breed sport horses (not exceeding 148cm)	\$5.00	PM: \$ 15, 10, 5

CHAMPION ADULT IN HAND SPORT PONY

To be judged from the winner of classes 458 and 459. Second place pony to the Champion to be judged alongside the remaining for Reserve. Winner eligible for Supreme Champion in hand Sport Horse/Pony of the Show.

RESERVE CHAMPION IN HAND SPORT PONY

SUPREME IN HAND SPORT HORSE/PONY

Garland kindly sponsored by Regent Park NZ

In Hand Suitability Classes

FOLLOWS LED SPORT HORSE AND PONY

- Open to all Horses and Ponies (can enter multiple classes).
- All Horses or Ponies 3 years or over MUST be shown in a bit.
- Numbers must be worn (armband numbers are acceptable).
- Stallions are NOT permitted in classes 460-463.

Showing Arena 4

460	Suitable as Field Hunter	\$5.00	PM: \$ 15, 10, 5
461	Suitable for Show Jumping	\$5.00	PM: \$ 15, 10, 5
462	Suitable for Dressage	\$5.00	PM: \$ 15, 10, 5
463	Suitable as Show Hack/Pony	\$5.00	PM: \$ 15, 10, 5



Pintos

HOY qualifier

- Horses MUST be registered & the owner a current financial member of the NZ Pinto Horse Society Inc.
- Registrations numbers must be shown on the entry form.

Showing Arena 1

8 :30 AM	990	Best Presented Horse and Handler	\$5.00	PM: \$ 15, 10, 5
	991	Best Colour and Pattern	\$5.00	PM: \$ 15, 10, 5
	992	Paced and Mannered	\$5.00	PM: \$ 15, 10, 5
	993	Foal or Yearling	\$5.00	PM: \$ 15, 10, 5
	994	2 or 3 year old	\$5.00	PM: \$ 15, 10, 5

CHAMPION YOUNGSTOCK PINTO

To be judged from the winners of classes 993 - 994. Second placed horse to the Champion to be judged alongside the remaining winners for Reserve.

RESERVE CHAMPION YOUNGSTOCK PINTO

995	Lightweight/middleweight horse 4 years and over	\$5.00	PM: \$ 15, 10, 5
996	Heavyweight horse 4 years and over	\$5.00	PM: \$ 15, 10, 5

CHAMPION ADULT PINTO

To be judged from the winners of classes 995 - 996. Second placed horse to the Champion to be judged alongside the remaining winners for Reserve.

RESERVE CHAMPION ADULT PINTO

SUPREME CHAMPION PINTO

To be judged from Champion Youngstock Pinto and Champion Adult Pinto. Supreme to go forward to Supreme Inhand Allbreeds.

Showing Arena 2

12:30 PM	997	Best Presented Horse and Rider	\$5.00	PM: \$ 15, 10, 5
	998	Best Paced & Mannered - any height	\$5.00	PM: \$ 15, 10, 5
	999	Novice 0-5 wins - any height	\$5.00	PM: \$ 15, 10, 5
	1000	Open pony, not exceeding 148cm	\$5.00	PM: \$ 15, 10, 5

CHAMPION RIDDEN PINTO PONY

To be judged from the winners of classes 999 - 1000. Second placed horse to the Champion to be judged alongside the remaining winners for Reserve.

RESERVE CHAMPION RIDDEN PINTO PONY

1001	Open Lightweight/middleweight horse over 148cm	\$5.00	PM: \$ 15, 10, 5
1002	Open Heavyweight horse over 148cm	\$5.00	PM: \$ 15, 10, 5

CHAMPION RIDDEN PINTO

To be judged from the winners of classes 1000- 1002. Second placed horse to the Champion to be judged alongside the remaining winners for Reserve.

RESERVE CHAMPION RIDDEN PINTO



Morgan

- Only stock registered in accordance with the rules of the Morgan Horse Association of New Zealand (Inc.) may compete in this section.
- Note: Less than 4 entries in any class and classes may be combined.

Showing Arena 2

8 :30 AM	980	Best Presented Pure or Partbred Morgan	\$5.00	PM: \$ 15, 10, 5
	981	Purebred Morgan Stallion 4 years and over	\$5.00	PM: \$ 15, 10, 5
	982	Purebred Morgan mare 4 year and over	\$5.00	PM: \$ 15, 10, 5
	983	Purebred Morgan Colt, Filly or Gelding 3 years and under	\$5.00	PM: \$ 15, 10, 5

CHAMPION PUREBRED MORGAN

To be judged from the winners of classes 981 - 983. Second placed horse to the Champion to be judged alongside the remaining winners for Reserve.

RESERVE CHAMPION PUREBRED MORGAN

	984	Partbred Morgan Mare 4 years and over	\$5.00	PM: \$ 15, 10, 5
	985	Partbred Morgan Gelding 4 years and over	\$5.00	PM: \$ 15, 10, 5
	986	Partbred Morgan Colt (up to six months of age) and Filly or Gelding 3 years and	\$5.00	PM: \$ 15, 10, 5

CHAMPION PARTBRED MORGAN

To be judged from the winners of classes 984 - 986. Second placed horse to the Champion to be judged alongside the remaining winners for Reserve.

RESERVE CHAMPION PARTBRED MORGAN

SUPREME CHAMPION MORGAN

To be judged from the Champion Purebred and Champion Partbred Morgan. Supreme goes forward to Supreme Inhand Allbreeds.

Irish Sport Horse

- All entries to be Registered with the Irish Draught Horse Society of NZ. Registered horses are held in an online database and can be found at www.irishhorse.org.nz/nz-registered-irish-horses
- Appendix registered horses are NOT eligible for Irish Sport Horse Section.

Supreme Champion Lead Irish Exhibit, Shamrock sash is sponsored by IRISH DRAUGHT HORSE SOCIETY OF NZ

Champion Ridden Irish Horse, Shamrock sash is sponsored by IRISH DRAUGHT HORSE SOCIETY OF NZ

Showing Arena 3

Led Registered Irish Horse

8 :30 AM	930	Best Presented	\$5.00	PM: \$ 15, 10, 5
	931	Best Led Foal or Yearling, any sex	\$5.00	PM: \$ 15, 10, 5
	932	Best Led 2 or 3 years old, any sex	\$5.00	PM: \$ 15, 10, 5

CHAMPION LED IRISH HORSE YOUNGSTOCK

To be judged from the winners of classes 931 and 932. Second placed Horse to the Champion to be judged alongside the remaining winners for Reserve.

RESERVE CHAMPION LED IRISH HORSE YOUNGSTOCK

	933	Best Movement Youngstock	\$5.00	PM: \$ 15, 10, 5
	934	Best Led Female Adult Irish Horse	\$5.00	PM: \$ 15, 10, 5
	935	Best Led Male Adult Irish Horse	\$5.00	PM: \$ 15, 10, 5

CHAMPION LED IRISH ADULT

To be judged from the winners of classes 934 and 935. Second placed horse to the Champion to be judged alongside the remaining winners for Reserve.

RESERVE CHAMPION LED IRISH ADULT

SUPREME CHAMPION LED IRISH EXHIBIT

To be judged from Champion Led Irish Youngstock and Champion Led Irish Adult. Supreme goes forward to Supreme Inhand Allbreeds. Shamrock sash sponsored by IDHSNZ.

Showing Arena 3

Ridden Registered Irish Horse

12:30 PM	936	Best Presented	\$5.00	PM: \$ 15, 10, 5
	937	Best Novice Irish Horse 0-5 wins	\$5.00	PM: \$ 15, 10, 5
	938	Lightweight/Middleweight Irish Horse	\$5.00	PM: \$ 15, 10, 5
	939	Heavyweight Irish Horse	\$5.00	PM: \$ 15, 10, 5
	940	Best Paced & Mannered Irish Horse	\$5.00	PM: \$ 15, 10, 5

CHAMPION RIDDEN IRISH HORSE

To be judged from the winners of classes 938 - 939. Second placed Horse to the Champion to be judged alongside the remaining winners for Reserve. Shamrock sash sponsored by IDHSNZ.

RESERVE CHAMPION RIDDEN IRISH HORSE

Shetland

- All entries in this Section must be registered with the New Zealand Shetland Pony Breeders Society (Inc.) Registered number to be stated on entry form.
- Ponies to be shown in natural coat and full feather.

Showing Arena 5

8 :30 AM	1010	Best Presented Purebred Shetland (4 years and over) and Handler	\$5.00	PM: \$ 15, 10, 5
	1011	Best Presented Purebred Shetland Pony (3 years and under) and Handler	\$5.00	PM: \$ 15, 10, 5
	1012	Best Paced & Mannered (4 years and over)	\$5.00	PM: \$ 15, 10, 5
	1013	Best Paced & Mannered (3 years and under)	\$5.00	PM: \$ 15, 10, 5
	1014	Purebred Mare 4 years and over	\$5.00	PM: \$ 15, 10, 5
	1015	Purebred Gelding 4 years and over	\$5.00	PM: \$ 15, 10, 5
	1016	Purebred Stallion 4 years and over	\$5.00	PM: \$ 15, 10, 5

CHAMPION ADULT SHETLAND

To be judged from the winners of classes 1014- 1016. Second placed horse to the Champion to be judged alongside the remaining winners for Reserve.

RESERVE CHAMPION ADULT SHETLAND

1017	Purebred Foal. Colt, Filly or Gelding	\$5.00	PM: \$ 15, 10, 5
1018	Purebred 2 year old. Colt, Filly or Gelding	\$5.00	PM: \$ 15, 10, 5
1019	Purebred 3 year old. Colt, Filly or Gelding	\$5.00	PM: \$ 15, 10, 5

CHAMPION YOUNGSTOCK

To be judged from the winners of classes 1017- 1019. Second placed horse to the Champion to be judged alongside the remaining winners for Reserve.

RESERVE CHAMPION YOUNGSTOCK

SUPREME CHAMPION SHETLAND

To be judged from the Champion Adult Shetland Pony and Champion Youngstock Shetland Pony. Supreme to go forward to Supreme Inhand Allbreeds.



Welsh Pony and Cob

FOLLOWS PINTO IN HAND

- All entries to be Registered with The Welsh Pony & Cob Society of New Zealand (Inc.) in either The Welsh Pony & Cob Society of New Zealand Stud Book or The Welsh Pony & Cob Society of New Zealand Partbred Register or in the case of foals, to be eligible for Registration.
- Proof of registration must be given on the Show Entry Form and produced on Show Day if requested by the Steward, Chief Steward or Judge.
- There is No height restrictions in the Welsh Classes and height certificates are not required.
- Registered Welsh Purebreds must not be plaited in In-hand classes unless Exhibited in Ridden or Driven classes on that day.

Supreme Welsh Exhibit rosette sponsored by THE WELSH PONY & COB SOCIETY OF NZ (Inc)

1020	Best Presented Pure Exhibit	\$5.00	PM: \$ 15, 10, 5
1021	Welsh Stallion or Gelding 4 years and over Section A	\$5.00	PM: \$ 15, 10, 5
1021.1	Welsh Stallion or Gelding 4 years and over Section B	\$5.00	PM: \$ 15, 10, 5
1022	Welsh Stallion or Gelding 4 years and over Section C & D	\$5.00	PM: \$ 15, 10, 5
1023	Welsh Mare 4 years and over Section A	\$5.00	PM: \$ 15, 10, 5
1023.1	Welsh Mare 4 years and over Section B	\$5.00	PM: \$ 15, 10, 5
1024	Welsh Mare 4 years and over Section C & D	\$5.00	PM: \$ 15, 10, 5

CHAMPION INHAND PUREBRED ADULT WELSH

To be judged from the winners from classes 1021 - 1024. Second placed horse to the Champion to be judged alongside the remaining winners for Reserve.

RESERVE CHAMPION INHAND PUREBRED ADULT WELSH

1025	Welsh Foal or Yearling Section A	\$5.00	PM: \$ 15, 10, 5
1025.1	Welsh Foal or Yearling Section B	\$5.00	PM: \$ 15, 10, 5
1026	Welsh Foal or Yearling Section C & D	\$5.00	PM: \$ 15, 10, 5
1027	Welsh 2 and 3 years old Section A	\$5.00	PM: \$ 15, 10, 5
1027.1	Welsh 2 and 3 years Section B	\$5.00	PM: \$ 15, 10, 5
1028	Welsh 2 and 3 years old Section C & D	\$5.00	PM: \$ 15, 10, 5

CHAMPION INHAND PUREBRED YOUNGSTOCK WELSH

To be judged from the winners from classes 1025 - 1028. Second placed horse to the Champion to be judged alongside the remaining winners for Reserve.

RESERVE CHAMPION INHAND PUREBRED YOUNGSTOCK WELSH

CHAMPION OF CHAMPIONS INHAND PUREBRED WELSH

Champion Inhand Purebred Adult Welsh and Champion Inhand Youngstock to parade.

Welsh Partbred – 12.5% Welsh or more

1029	Best Presented Partbred Welsh	\$5.00	PM: \$ 15, 10, 5
1030	Welsh Partbred Stallion or Gelding 4 years and over	\$5.00	PM: \$ 15, 10, 5
1031	Welsh Partbred Mare 4 years and over	\$5.00	PM: \$ 15, 10, 5

CHAMPION INHAND PARTBRED WELSH ADULT

To be judged from the winners from classes 1030 - 1031. Second placed horse to the Champion to be judged alongside the remaining winners for Reserve.

RESERVE CHAMPION INHAND PARTBRED WELSH ADULT

1032	Welsh Partbred Foal or Yearling	\$5.00	PM: \$ 15, 10, 5
1033	Welsh Partbred 2 and 3 years old. Colt, Filly or Gelding]	\$5.00	PM: \$ 15, 10, 5

CHAMPION INHAND PARTBRED YOUNGSTOCK

To be judged from the winners from classes 1032 - 1033. Second placed horse to the Champion to be judged alongside the remaining winners for Reserve.

RESERVE INHAND PARTBRED YOUNGSTOCK WELSH

CHAMPION OF CHAMPIONS INHAND PARTBRED WELSH

Champion Inhand Partbred Adult Welsh and Champion Inhand Partbred Youngstock Welsh to parade.

SUPREME WELSH EXHIBIT

Champion of Champions Purebred Welsh and Champion of Champions Partbred Welsh to parade. Supreme Inhand Welsh to go forward for Supreme Inhand Allbreeds.

Welsh Ridden

12:30 PM	1034	Best Presented Ridden Welsh - Purebred	\$5.00	PM: \$ 15, 10, 5
	1035	Novice Purebred Ridden Welsh 0-5 wins (all categories)	\$5.00	PM: \$ 15, 10, 5
	1036	Best Ridden Welsh Section A	\$5.00	PM: \$ 15, 10, 5
	1037	Best Ridden Welsh Section B	\$5.00	PM: \$ 15, 10, 5
	1038	Best Ridden Welsh Section C & D	\$5.00	PM: \$ 15, 10, 5

CHAMPION RIDDEN PUREBRED WELSH

To be judged from the winners from classes 1035 - 1038. Second placed horse to the Champion to be judged alongside the remaining winners for Reserve.

RESERVE CHAMPION PUREBRED WELSH

	1039	Best Paced & Mannered Purebred Welsh	\$5.00	PM: \$ 15, 10, 5
	1040	Best Presented Partbred Ridden Welsh	\$5.00	PM: \$ 15, 10, 5
	1041	Novice Partbred Welsh 0-5 wins	\$5.00	PM: \$ 15, 10, 5
	1042	Best Ridden Partbred Welsh	\$5.00	PM: \$ 15, 10, 5

CHAMPION RIDDEN PARTBRED WELSH

RESERVE CHAMPION RIDDEN PARTBRED

	1043	Best Paced & Mannered Partbred Welsh	\$5.00	PM: \$ 15, 10, 5
--	------	--------------------------------------	---------------	------------------



Clydesdales

- If insufficient entries in a class, then the classes may be combined at Judges Discretion.

Showing Arena 6

Inhand Classes

8 :30 AM	830	Stallion 4 years & over	\$5.00	PM: \$ 15, 10, 5
	831	Colt 2 and 3 years	\$5.00	PM: \$ 15, 10, 5
	832	Colt Yearling or Foal	\$5.00	PM: \$ 15, 10, 5

CHAMPION STALLION OR COLT

To be judged from the winners of classes 830 - 832. Second placed horse to the Champion to be judged alongside the remaining winners for Reserve.

RESERVE CHAMPION STALLION OR COLT

	833	Broodmare in foal or foal at foot	\$5.00	PM: \$ 15, 10, 5
	834	Dry Mare 4 years and over	\$5.00	PM: \$ 15, 10, 5
	835	Filly 2 and 3 years	\$5.00	PM: \$ 15, 10, 5
	836	Filly yearling or foal	\$5.00	PM: \$ 15, 10, 5

CHAMPION MARE OR FILLY

To be judged from the winners of classes 833 - 836. Second placed horse to the Champion to be judged alongside the remaining winners for Reserve.

RESERVE CHAMPION MARE OR FILLY

837 Gelding any age \$5.00 PM: \$ 15, 10, 5

SUPREME CHAMPION

To be judged from the Champion Stallion or Colt and the Champion Mare or Filly. Supreme Champion to go forward to Supreme Inhand Allbreeds.

Performance Classes

838 Ridden Clydesdale \$5.00 PM: \$ 15, 10, 5
839 Long Reining class \$5.00 PM: \$ 15, 10, 5
Driven over a course set by the Judge.
840 Single horse in a sledge \$5.00 PM: \$ 15, 10, 5
841 Pair of horses in a sledge \$5.00 PM: \$ 15, 10, 5
842 Single horse in a wagon/wheeled vehicle \$5.00 PM: \$ 15, 10, 5
Judged 50% turnout and 50% driven work.
843 Log Skid \$5.00 PM: \$ 15, 10, 5

Golden Horse

FOLLOWS MORGAN IN HAND. FOLLOWS GYPSY COB RIDDEN.

- Exhibits entered in this section must be registered with NZGHS
- Registration numbers must be shown on entry form.
- Exhibits can be plaited but are not eligible to enter the Mane & Tail class.
- To be conducted under the showing rules of NZGHS.
- No false tails or dyeing of manes or tails. Hoof black is optional.

Golden Horse classes are sponsored by GOLDEN HORSE SOCIETY

Showing Arena 2

880 Best Presented Horse & Handler - All Colours \$5.00 PM: \$ 15, 10, 5
881 Best Coloured Palomino \$5.00 PM: \$ 15, 10, 5
882 Best Coloured Buckskin \$5.00 PM: \$ 15, 10, 5
883 Best Coloured broken coloured or double dilute \$5.00 PM: \$ 15, 10, 5
884 Best mane and tail, Palomino and double dilute \$5.00 PM: \$ 15, 10, 5
885 Best mane and tail, Buckskin and broken Coloured \$5.00 PM: \$ 15, 10, 5

Youngstock 3 years and under

886 Foal or yearling - All Colours \$5.00 PM: \$ 15, 10, 5
887 2 year olds - All Colours \$5.00 PM: \$ 15, 10, 5
888 3 year olds - All Colours \$5.00 PM: \$ 15, 10, 5

CHAMPION YOUNGSTOCK

To be judged from the winners of classes 886, 887 and 888. Second placed horse to the Champion to be judged alongside the remaining winners for Reserve.

RESERVE CHAMPION YOUNGSTOCK

Adults 4 years and over

889 Palomino 4 years and over \$5.00 PM: \$ 15, 10, 5
890 Buckskin 4 years and over \$5.00 PM: \$ 15, 10, 5
891 Broken coloured and double dilute 4 years and over \$5.00 PM: \$ 15, 10, 5

CHAMPION ADULT

To be judged from the winners of classes 889, 890 and 891. Second placed horse to the Champion to be judged alongside the remaining winners for Reserve.

RESERVE CHAMPION ADULT

SUPREME INHAND GOLDEN HORSE

To be judged from Champion Youngstock and Champion Adult. Supreme Champion to go forward to Supreme Inhand Allbreeds.

Showing Arena 5

Golden Horse Ridden Classes

892	Best Presented Horse and Rider	\$5.00	PM: \$ 15, 10, 5
893	Novice Pony not exceeding 148cm 0-5 wins	\$5.00	PM: \$ 15, 10, 5
894	Novice Horse over 148cm 0-5 wins	\$5.00	PM: \$ 15, 10, 5
895	Open Pony not exceeding 148cm	\$5.00	PM: \$ 15, 10, 5
896	Open Horse over 148cm	\$5.00	PM: \$ 15, 10, 5

CHAMPION RIDDEN GOLDEN HORSE

To be judged from the winners of classes 893 -896. Second placed horse to the Champion to be judged alongside the remaining winners for Reserve.

RESERVE CHAMPION GOLDEN HORSE

897	Best Paced & Mannered - any height	\$5.00	PM: \$ 15, 10, 5
-----	------------------------------------	---------------	------------------



Standardbred

FOLLOWS IRISH SPORT HORSE IN HAND. FOLLOWS IRISH SPORT HORSE RIDDEN.

- Horses age as of the 1st August.
- Competitors must state the NZSBA passport registration number on entry form. Entry's may not be accepted with it.
- All Standardbreds must carry a brand or a microchip that is registered with Harness Racing New Zealand.
- NZSBA Passports must be carried by all Standardbreds for both Inhand & Ridden sections for identification.
- RAS Height certificates are not required for the Inhand section, unless classes are defined by height.
- RAS Height Certificates must be carried by all Standardbreds in the Ridden section and wins recorded in it under the Breed/Standardbred section.
- Novice horses to be ridden in a snaffle bridle.
- On entering the ring, Competitors must present their NZSBA Showing Passport to the Steward to check - a strict policy of "no passport - no entry" will be in place at all shows.
- Numbers must be worn (armband numbers are acceptable).

Standardbred classes are sponsored by NZ STANDARDBRED ASSOCIATION

Showing Arena 3

750	Best Presented Led Standardbred & Handler	\$5.00	PM: \$ 15, 10, 5
751	Mare/Filly	\$5.00	PM: \$ 15, 10, 5
752	Gelding/Colt/Stallion	\$5.00	PM: \$ 15, 10, 5

CHAMPION INHAND STANDARDBRED

To be judged from the winner of classes 751 and 752. Second placed horse to the Champion to be judged alongside the remaining winners for Reserve.

RESERVE CHAMPION INHAND STANDARDBRED

Showing Arena 3

753	Best Trot	\$5.00	PM: \$ 15, 10, 5
754	Best Paced	\$5.00	PM: \$ 15, 10, 5
755	Best Handler	\$5.00	PM: \$ 15, 10, 5
756	Best Presented Horse and Rider	\$5.00	PM: \$ 15, 10, 5
757	Best Walk	\$5.00	PM: \$ 15, 10, 5
758	Novice Standardbred 0-5 wins - 158cm & under	\$5.00	PM: \$ 15, 10, 5
759	Novice Standardbred 0-5 wins - over 158cm	\$5.00	PM: \$ 15, 10, 5

CHAMPION RIDDEN NOVICE

To be judged from the winners of classes 758 and 759. Second placed horse to the Champion to be judged alongside the remaining winners for Reserve.

RESERVE CHAMPION RIDDEN NOVICE

760	Open Standardbred 158cm and under	\$5.00	PM: \$ 15, 10, 5
761	Open Standardbred over 158cm	\$5.00	PM: \$ 15, 10, 5

CHAMPION RIDDEN STANDARDBRED

To be judged from the winners of classes 760 and 761. Second placed horse to the Champion to be judged alongside the remaining winners for Reserve.

RESERVE CHAMPION STANDARDBRED

762	Open Best Paced	\$5.00	PM: \$ 15, 10, 5
763	Open Best Mannered	\$5.00	PM: \$ 15, 10, 5
764	Best Rider	\$5.00	PM: \$ 15, 10, 5

Miniature Horse

FOLLOWS SHETLANDS IN HAND

Champion and Supreme classes sponsored by KADALI FARMS

Showing Arena 5

941	Best Presented Category A Horse and Handler	\$5.00	PM: \$ 15, 10, 5
942	Female 2 years and under Cat A	\$5.00	PM: \$ 15, 10, 5
943	Female 3 years and over Cat A	\$5.00	PM: \$ 15, 10, 5
944	Male 2 years and under Cat A	\$5.00	PM: \$ 15, 10, 5
945	Male 3 years and over Cat A	\$5.00	PM: \$ 15, 10, 5

CHAMPION CAT A MINATURE HORSE

PM: \$ 50

To be judged from the winners of classes 942 - 945. Second placed horse to the Champion to be judged alongside the remaining winners for Reserve.

RESERVE CHAMPION CAT A MINATURE HORSE

946	Best Presented Category B Horse and Handler	\$5.00	PM: \$ 15, 10, 5
947	Female 2 years and under Cat B	\$5.00	PM: \$ 15, 10, 5
948	Female 3 years and over Cat B	\$5.00	PM: \$ 15, 10, 5
949	Male 2 years and under Cat B	\$5.00	PM: \$ 15, 10, 5
950	Male 3 years and over Cat B	\$5.00	PM: \$ 15, 10, 5

CHAMPION CAT B MINATURE HORSE

PM: \$ 50

*To be judged from the winners of classes 947 - 950. Second placed horse to the Champion to be judged alongside the remaining winners for Reserve.***RESERVE CHAMPION CAT B MINATURE HORSE****SUPREME CHAMPION MINIATURE HORSE**

PM: \$ 50

To be judged from Champion Category A and Champion Category B. Supreme Champion is eligible for Supreme Inhand Allbreeds. Garland and rug kindly sponsored by Kadali Farms.

951	Best Head Combined Cat A and B	\$5.00	PM: \$ 15, 10, 5
952	Best Solid Colour Combined Cat A and B	\$5.00	PM: \$ 15, 10, 5
953	Best Multi Colour Combined Cat A and B	\$5.00	PM: \$ 15, 10, 5
954	Best Movement Combined Cat A and B	\$5.00	PM: \$ 15, 10, 5

Arabian

FOLLOWS GOLDEN HORSE IN HAND. FOLLOWS SIDE SADDLE RIDDEN.

- Only Purebred, Anglo or Derivative Arabian Horses with a minimum of 12.5% Arabian blood that are registered with the New Zealand Arabian Horse Society (Inc) are eligible to compete in these classes.
- Proof of registration (a photocopy of the registration certificate must accompany the entry form) and must be produced on show day if requested by the steward.
- All classes are conducted under the NZAHS Rules for Judging & Showing Arabian Horses in conjunction with the RAS Rules, Regulations and By-laws.

Showing Arena 2 Purebred Arabian

800	Best presented Led Purebred Horse & Handler	\$5.00	PM: \$ 15, 10, 5
801	Purebred Arabian foal or yearling - Colt, Filly or Gelding	\$5.00	PM: \$ 15, 10, 5
802	Purebred Arabian 2 and 3 years old - Colt, Filly or Gelding	\$5.00	PM: \$ 15, 10, 5

CHAMPION LED JUNIOR PUREBRED ARABIAN*To be judged from the winners of classes 801-802. Second placed horse to the Champion to be judged alongside the remaining winners for Reserve.***RESERVE CHAMPION LED JUNIOR**

803	Purebred Arabian Mare 4 years & over	\$5.00	PM: \$ 15, 10, 5
804	Purebred Arabian Stallion or Gelding 4 years & over	\$5.00	PM: \$ 15, 10, 5

CHAMPION LED ADULT PUREBRED ARABIAN*To be judged from the winners of classes 803-804. Second placed horse to the Champion to be judged alongside the remaining winners for Reserve.***RESERVE CHAMPION LED ADULT PUREBRED ARABIAN****CHAMPION OF CHAMPION PUREBRED ARABIAN***Champion Led Junior Purebred Arabian and Champion Led Adult Purebred to parade.*

805	Classic Action Purebred Arabian	\$5.00	PM: \$ 15, 10, 5
806	Classic Head Purebred Arabian	\$5.00	PM: \$ 15, 10, 5

Derivative Arabian

807	Best Presented Led Derivate Horse & Handler	\$5.00	PM: \$ 15, 10, 5
808	Derivative Arabian foal or yearling - Colt, Filly or gelding	\$5.00	PM: \$ 15, 10, 5
809	Derivative Arabian 2 or 3 years old - Stallion, Mare or Gelding	\$5.00	PM: \$ 15, 10, 5

CHAMPION LED JUNIOR DERIVATIVE ARABIAN*To be judged from the winners of classes 808-809. Second placed horse to the Champion to be judged alongside the remaining winners for Reserve.***RESERVE CHAMPION LED JUNIOR DERIVATIVE ARABIAN**

810	Derivative Arabian Mare 4 years & over	\$5.00	PM: \$ 15, 10, 5
-----	--	---------------	------------------

811 Derivative Arabian Stallion or Gelding 4 years & over \$5.00 PM: \$ 15, 10, 5

CHAMPION LED ADULT DERIVATIVE ARABIAN

To be judged from the winners of classes 810-811. Second placed horse to the Champion to be judged alongside the remaining winners for Reserve.

RESERVE CHAMPION LED ADULT DERIVATIVE ARABIAN

CHAMPION OF CHAMPIONS LED DERIVATIVE ARABIAN

To be judged from the Champion Junior Derivative and the Champion Adult Derivative.

SUPREME CHAMPION ARABIAN

Champion of Champions Led Purebred Arabian and Champion of Champions Led Derivative Arab to parade. Supreme Champion to go forward to Supreme Inhand Allbreeds.

812 Classic Action Derivative Arabian \$5.00 PM: \$ 15, 10, 5

813 Classic Head Derivative Arabian \$5.00 PM: \$ 15, 10, 5

Showing Arena 4

Ridden Classes

814 Best Presented Ridden Purebred or Derivative Arabian Horse & Rider \$5.00 PM: \$ 15, 10, 5

815 Best Walk Purebred or Derivative Arabian \$5.00 PM: \$ 15, 10, 5

816 Best Trot Purebred or Derivative Arabian \$5.00 PM: \$ 15, 10, 5

817 Novice Ridden Purebred Arabian (0-5 wins under saddle) \$5.00 PM: \$ 15, 10, 5

818 Novice Ridden Derivative Arabian (0-5 wins under saddle) \$5.00 PM: \$ 15, 10, 5

CHAMPION NOVICE RIDDEN ARABIAN

To be judged from the winners of classes 817 & 818. Second placed horse to the Champion to be judged alongside the remaining winners for Reserve.

RESERVE CHAMPION NOVICE RIDDEN ARABIAN

819 Open Ridden Purebred Arabian \$5.00 PM: \$ 15, 10, 5

820 Open Ridden Derivative Arabian \$5.00 PM: \$ 15, 10, 5

CHAMPION RIDDEN ARABIAN

To be judged from the winners of classes 819 & 820. Second placed horse to the Champion to be judged alongside the remaining winners for Reserve.

RESERVE CHAMPION RIDDEN ARABIAN

821 Best Paced & Mannered Ridden Purebred Arabian \$5.00 PM: \$ 15, 10, 5

822 Best Paced & Mannered Ridden Derivative Arabian \$5.00 PM: \$ 15, 10, 5

823 Costume Class \$5.00 PM: \$ 15, 10, 5



Gypsy Cob

FOLLOWS MINIATURES IN HAND

- Horse MUST be registered & the owner a financial member of the New Zealand Gypsy Cob Association Incorporated at close of entries.
- Ridden horses must be four years old or over (no youngstock in ridden classes. Age of horse is at 1st August and age of rider/handler as of date of the Show.
- NZGCA performance card must be carried for all ridden classes.
- Height certificates are not required.

Showing Arena 5

Purebred In hand

900	Best Presented Purebred Gypsy Cob	\$5.00	PM: \$ 15, 10, 5
901	Adult Purebred Gypsy Cob 4 years and over	\$5.00	PM: \$ 15, 10, 5
902	Youngstock Purebred Gypsy Cob 3 years and under	\$5.00	PM: \$ 15, 10, 5

CHAMPION PUREBRED GYPSY COB

To be judged from the winners of classes 901 and 902. Second placed horse to the Champion to be judged alongside the remaining winners for Reserve. Champion goes forward to Supreme Inhand Allbreeds.

RESERVE CHAMPION GYPSY COB

903	Best Paced Purebred Gypsy Cob	\$5.00	PM: \$ 15, 10, 5
904	Best Mannered Purebred Gypsy Cob	\$5.00	PM: \$ 15, 10, 5

Partbred In hand

905	Best Presented Partbred Gypsy Cob	\$5.00	PM: \$ 15, 10, 5
906	Adult Partbred Gypsy Cob 4 years and over	\$5.00	PM: \$ 15, 10, 5
907	Youngstock Partbred Gypsy Cob 3 years and under	\$5.00	PM: \$ 15, 10, 5

CHAMPION PARTBRED GYPSY COB

To be judged from the winners of classes 906 and 907. Second placed horse to the Champion to be judged alongside the remaining winners for Reserve. Champion goes forward to Supreme Inhand Allbreeds.

RESERVE CHAMPION PARTBRED GYPSY COB

908	Best Paced Partbred Gypsy Cob	\$5.00	PM: \$ 15, 10, 5
909	Best Mannered Partbred Gypsy Cob	\$5.00	PM: \$ 15, 10, 5

Showing Arena 5

Purebred Ridden

12:30 PM	910	Novice 0-5 wins Purebred Gypsy Cob	\$5.00	PM: \$ 15, 10, 5
	911	Open Purebred Gypsy Cob	\$5.00	PM: \$ 15, 10, 5

CHAMPION PUREBRED RIDDEN GYPSY COB

To be judged from the winners of classes 910 and 911. Second placed Horse to the Champion to be judged alongside the remaining winners for Reserve.

RESERVE CHAMPION PUREBRED RIDDEN GYPSY COB

912	Best Paced Purebred Gypsy Cob	\$5.00	PM: \$ 15, 10, 5
913	Best Mannered Purebred Gypsy Con	\$5.00	PM: \$ 15, 10, 5

Partbred Ridden

914	Novice 0-5 wins Partbred Gypsy Cob	\$5.00	PM: \$ 15, 10, 5
915	Open Partbred Gypsy Cob	\$5.00	PM: \$ 15, 10, 5

CHAMPION PARTBRED RIDDEN GYPSY COB

To be judged from the winners of classes 914 and 915. Second placed Horse to the Champion to be judged alongside the remaining winners for Reserve.

RESERVE CHAMPION RIDDEN GYPSY COB

916	Best Paced Partbred Gypsy Cob	\$5.00	PM: \$ 15, 10, 5
917	Best Mannered Partbred Gypsy Cob	\$5.00	PM: \$ 15, 10, 5

Side Saddle

Competitors in this section must be current financial members of the New Zealand Side Saddle Association.

Side Saddle classes are sponsored by NZ SIDE SADDLE ASSOCIATION

Showing Arena 4

12:30 PM	790	Best Presented horse, rider and equipment	\$5.00	PM: \$ 15, 10, 5
	791	Concours d' Elegance	\$5.00	PM: \$ 15, 10, 5
	792	Best Side Saddle Rider	\$5.00	PM: \$ 15, 10, 5
	793	Best Paced & Mannered Side Saddle Mount	\$5.00	PM: \$ 15, 10, 5
	794	Best Side Saddle Mount	\$5.00	PM: \$ 15, 10, 5

CHAMPION SIDE SADDLE MOUNT

To be judged from the winners of classes 791-794. Second placed horse to the Champion to be judged alongside the remaining winners for Reserve.

RESERVE CHAMPION SIDE SADDLE MOUNT



Pleasure Horse and Pony

Affiliated.

Pleasure Horse/Pony means those animals who do not fit the mould of a Show Horse/Pony. We welcome any breed (eg Appaloosas, Quarter Horses, Standardbreds, Clydr X) and colour. They should be an uncomplicated and genuine pleasure to ride. Whilst they do not possess the show quality conformation of a show horse, they should in their own way be a delight to ride, with impeccable manners. A "pleasure mount" is NOT an inexperienced mount with show quality conformation who is destined for the open show ring.

- From 1 August 2015, for a horse/pony to meet the annual title show qualification requirements they must be registered with NZEPS.
- Horses/ponies must never have been placed first in an open show ring class including working hunter. However, members may apply for dispensation to NZEPS.
- Ordinary snaffle bit as per Dressage NZ definition only, no poll action. No bit guards, shadow rolls, ear plugs muffs or bonnets, martingale (breast plates are allowed) or tie downs.
- Bitless bridles are only permitted in Recreational pleasure classes.
- Only cavesson nosebands are permitted, no strapping below the bit.
- Whips may be carried but must not exceed 76cms in length.
- All riders must wear a 3-point harness helmet conforming to the current NZ Safety Standard or an equivalent standard and be yellow tagged.
- Spurs are not to be worn.
- Riders may be registered with other bodies.
- Riders may have competed outside the Pleasure horse/pony section.
- Riders in Pony classes must be under 17 years (proof of rider's age may be requested).
- Children riding hacks must compete in horse classes.
- Adults may ride ponies in horse classes without prejudice.

Classes 775 and 783, Ribbons are sponsored by PLEASURE HORSE SOCIETY

Showing Arena tbc

12:30 PM	770	Best Presented Pleasure Pony	\$5.00	PM: \$ 15, 10, 5
	771	Best Walking Pleasure Pony	\$5.00	PM: \$ 15, 10, 5
	772	Best Trot Pleasure Pony	\$5.00	PM: \$ 15, 10, 5
	773	Most Suitable for Beginner Rider Pleasure Pony	\$5.00	PM: \$ 15, 10, 5
	774	Best Combination Pleasure Pony	\$5.00	PM: \$ 15, 10, 5
	775	Best Registered Pleasure Combination (Open to NZEPS members only)	\$5.00	
	776	Best Paced and Mannered Pleasure Pony	\$5.00	PM: \$ 15, 10, 5

CHAMPION PLEASURE PONY

To be judged from the winners of classes 771-776. Second placed pony to the Champion to be judged alongside the remaining winners for Reserve. Eligible RAS Champion Sash & Medal Open Champion Pony.

RESERVE CHAMPION PLEASURE PONY

	777	Best Rider 16 years and under Pleasure Pony	\$5.00	PM: \$ 15, 10, 5
	778	Best Presented Pleasure Horse	\$5.00	PM: \$ 15, 10, 5
	779	Best Walking Pleasure Horse	\$5.00	PM: \$ 15, 10, 5
	780	Best Trot Pleasure Horse	\$5.00	PM: \$ 15, 10, 5
	781	Most Suitable for Beginner Rider Pleasure Horse	\$5.00	PM: \$ 15, 10, 5
	782	Best Combination Pleasure Horse	\$5.00	PM: \$ 15, 10, 5
	783	Best Registered Pleasure Combination (open to NZEPS members only)	\$5.00	
	784	Best Paced & Mannered Pleasure Horse	\$5.00	PM: \$ 15, 10, 5

CHAMPION PLEASURE HORSE

To be judged from the winners of classes 778-783. Second placed horse to the Champion to be judged alongside the remaining winners for Reserve. Eligible RAS Champion Sash & Medal Open Champion Horse.

RESERVE CHAMPION PLEASURE HORSE

	785	Best Rider 17 years and over Pleasure Horse	\$5.00	PM: \$ 15, 10, 5
--	-----	---	---------------	------------------



Supreme Awards

Showing Arena 1

11:30 AM

ALL BREEDS IN HAND SUPREME

Judged from all Champion In Hand winners (or if section does not have a Supreme then the Champion will go forward).

2 :30 PM

ALLBREEDS & AFFILIATED SOCIETIES RIDDEN SUPREME

Judges from all Champion Ridden winners

Christine Beatson Memorial Equitation

FOLLOWS IN HAND CLASSES. Not before 3.30pm (further timing will be announced on social media once entries have come in).

- Open to all divisions of Saddle Show Horses.
 - To be judged by a panel of 4 judges
 - Judges will score each horse in each of conformation and quality (under saddle and stripped), paces, manners and workout with the points collated. Harmonious partnership between horse and rider, with the horse capable of giving the rider a comfortable easy ride.
 - Profile information including breeding information to be provided with entry
 - Horses will trot around the arena and then perform a set workout (which will be made available from August).
- ❖ Judge 1: Assessment of conformation, trueness to type (park hack, hack, riding horse, hunter) at the halt and in the movement
 - ❖ Judge 2: Assessment of paces and movement, quality, soundness and regularity of paces, to include a good walk, lengthened trot and canter, in-hand gallop
 - ❖ Judge 3: Assessment of manners, attitude, transitions, and obedience
 - ❖ Judge 4: Assessment of the workout: quality of work, execution of the movements, overall impression. Assessment in-hand of conformation and overall quality – all four judges (All riders will require a handler for saddling/unsaddling).

Scoring:

30 - conformation and quality (under saddle and stripped)

30 - paces and movement

30 - manners and attitude

30 - workout

120

In hand (10 per judge) 40

TOTAL: 160 points

Showing Arena 1

3 :30 PM 660

Christine Beatson Memorial Equitation

Entry Fee Prize Money

\$20.00 PM: \$ 250, 200, 150, 100

Christine Beatson Memorial Salver donated by the Hyland Family. Garland kindly sponsored by Mrs Ann Holden. Prize money kindly sponsored by the Hyland Family and the Poverty Bay A&P Association.



S H O W I N G

P O N Y S H O W I N G S E C T I O N

T H U R S D A Y C L A S S E S

Golf Mania Paddock

Saddle Hunter - Ponies

HOY qualifier

- A pony may only be entered in the Show Pony Section or the Saddle Hunter Pony Section - NOT BOTH.
- All novice pony classes are open to riders of any age.
- Group A Saddle Hunter Pony, over 138cm and not exceeding 148cm (classes 510-515)
- Group B Saddle Hunter Pony, over 128cm and not exceeding 138cm (classes 516-521)
- Group C Saddle Hunter Pony, not exceeding 128cm (classes 522-527).
- The combining of A, B & C rings is not permitted.

Saddle Hunter ponies are sponsored by:

Group A: BENNETT FAMILY

Group B: JENNI CALVER

Group C: BOURKE FAMILY

Thursday, 16 October 2025

8:30 am

Showing Arena 5

Group C

			<u>Entry Fee</u>	<u>Prize Money</u>
8 :30 AM	522	Novice Saddle Hunter Pony not exceeding 128cm 0-2 wins	\$5.00	PM: \$ 15, 10, 5
	523	Novice Saddle Hunter Pony not exceeding 128cm 0-5 wins	\$5.00	PM: \$ 15, 10, 5
CHAMPION NOVICE SADDLE HUNTER not exceeding 128cm				
<i>To be judges from the winner of classes 522 and 523. Second placed pony to the Champion to be judges alongside the remaining winner for Reserve. Winner eligible for Novice Pony Supreme Champion of the Show.</i>				
RESERVE CHAMPION NOVICE SADDLE HUNTER PONY not exceeding 128cm				
	524	Novice Paced & Mannered Saddle Hunter Pony not exceeding 128cm	\$5.00	PM: \$ 15, 10, 5
	525	Open Saddle Hunter Pony not exceeding 123cm	\$5.00	PM: \$ 15, 10, 5
	526	Open Saddle Hunter Pony over 123cm and not exceeding 128cm	\$5.00	PM: \$ 15, 10, 5
CHAMPION OPEN SADDLE HUNTER PONY not exceeding 128cm				
<i>To be judged from the winner of classes 525 and 526. Second placed pony to the Champion to be judged alongside the remaining winner for Reserve. Winner eligible for Supreme Champion Pony. Eligible RAS Champion Sash & Medal Open Champion Pony.</i>				
RESERVE CHAMPION OPEN SADDLE HUNTER PONY not exceeding 128cm				
<i>Eligible for RAS Reserve Champion Sash awarded to Open Reserve Champion Pony.</i>				
	527	Open Paced & Mannered Saddle Hunter Pony not exceeding 128cm	\$5.00	PM: \$ 15, 10, 5
<i>Winner eligible for Champion Paced & Mannered Pony of Show</i>				

Showing Arena 4 Group B

8 :30 AM	516	Novice Saddle Hunter Pony over 128cm & not exceeding 138cm 0-2 wins	\$5.00	PM: \$ 15, 10, 5
	517	Novice Saddle Hunter Pony over 128cm & not exceeding 138cm 0-5 wins	\$5.00	PM: \$ 15, 10, 5

CHAMPION NOVICE SADDLE HUNTER PONY over 128 cm & not exceeding

To be judged from winner of classes 516 and 517. Second placed pony to the Champion to be judged alongside the remaining winner for Reserve. Winner eligible for Novice Pony Supreme Champion of the Show.

RESERVE CHAMPION NOVICE SADDLE HUNTER PONY over 128cm & not exceeding 138cm

518	Novice Paced and Mannered Saddle Hunter Pony not exceeding 138cm 0-5	\$5.00	PM: \$ 15, 10, 5
519	Open Saddle Hunter Pony over 128cm & not exceeding 133cm	\$5.00	PM: \$ 15, 10, 5
520	Open Saddle Hunter Pony over 133cm & not exceeding 138cm	\$5.00	PM: \$ 15, 10, 5

CHAMPION OPEN SADDLE HUNTER PONY over 128cm & not exceeding 138cm

To be judged from winner classes 519 and 520. Second placed pony to the Champion to be judged alongside the remaining winner for Reserve. Winner eligible for Supreme Champion Pony. Eligible for RAS Champion Sash and Medal awarded to Open Champion Pony.

RESERVE CHAMPION OPEN SADDLE HUNTER PONY over 128cm & not exceeding 138cm

Eligible for RAS Reserve Champion Sash awarded to Open Reserve Champion Pony.

521	Open Paced and Mannered Saddle Hunter Pony not exceeding 138cm	\$5.00	PM: \$ 15, 10, 5
-----	--	---------------	------------------

Winner eligible for Supreme Paced & Mannered Pony of Show

Showing Arena 3 Group A

8 :30 AM	510	Novice Saddle Hunter Pony over 138cm and not exceeding 148cm 0-2 wins	\$5.00	PM: \$ 15, 10, 5
	511	Novice Saddle Hunter Pony over 138cm & not exceeding 148cm 0-5 wins	\$5.00	PM: \$ 15, 10, 5

CHAMPION NOVICE SADDLE HUNTER PONY over 138cm & not exceeding

To be judged from winner of classes 510 and 511. Second placed pony to the Champion to be judged alongside the remaining winners for Reserve. Winner eligible for Novice Pony Supreme Champion of the Show.

RESERVE CHAMPION NOVICE SADDLE HUNTER PONY over 138cm & not exceeding 148cm

512	Novice Paced & Mannered Saddle Hunter Pony over 138cm & not exceeding 148cm 0-5 wins	\$5.00	PM: \$ 15, 10, 5
513	Open Saddle Hunter Pony over 138cm & not exceeding 143cm	\$5.00	PM: \$ 15, 10, 5
514	Open Saddle Hunter Pony over 143cm & not exceeding 148cm	\$5.00	PM: \$ 15, 10, 5

CHAMPION OPEN SADDLE HUNTER PONY over 138cm & not exceeding 148cm

To be judged from winner of the above classes 513 and 514. Second placed pony to the Champion to be judged alongside the remaining winner for Reserve. Winner eligible for Supreme Champion Pony. Eligible RAS Champion Sash & Medal Open Champion Pony

RESERVE CHAMPION OPEN SADDLE HUNTER PONY over 138 cm & not exceeding 148cm

Eligible for RAS Reserve Champion Sash awarded to Open Reserve Champion Pony.

515	Open Paced & Mannered Saddle Hunter Pony over 138cm and not exceeding 148cm	\$5.00	PM: \$ 15, 10, 5
-----	---	---------------	------------------

Winner eligible for Champion Paced & Mannered Pony of Show

Pony Breeders of NZ Saddle Hunter

FOLLOWS PONY SADDLE HUNTER

- To be eligible for these classes the Pony must be fully registered with the Pony Breeder's Society of NZ (Inc), that is to have permanent registration number, be 148cm or under, and to be foaled in New Zealand.
- The Pony must be ridden by a rider under the age of 17 years.
- Permanent Registration Number (PBNZ) must be stated on the entry form.
- If it is subsequently found that the winner is not registered with the Society, they will be required to forfeit this award.
- The Pony Breeders Society of NZ has donated special sashes for the following class.
- Winner must be able to show the ring steward their registration certificate before receiving the sash.

Showing Arena 3

10:00 AM 540 PONY BREEDERS Ridden Saddle Hunter Sash **\$5.00**

Pony must be fully registered with the Pony Breeder's Society of NZ (INC), that is to have permanent registration number, be 148cm or under, and to be foaled in NZ. The pony must be ridden by a rider under the age of 17 years.



NZ Riding Pony Society

FOLLOWS PBNZ SADDLE HUNTER

Entrants in these classes may be of show pony type/saddle hunter pony type/Pony Led class. The emphasis when judging these entrants is first and foremost quality confirmation (as pertaining to the Show Pony type or the Show/Saddle Hunter-type Riding Pony) and soundness (80%). Quality movement (in relation to type) combined with manners benefiting an animal bred to be a child's mount complete the criteria of a winning entrant (20%). Working entrants on the circle along with the opportunity to view the 'straightness' of each entrant's action is adequate. No workout is required. Entrants may be 'stripped' of their saddles.

- Entrants in this class may be of show pony type or show/saddle hunter type pony.
- To be eligible for these classes the Pony must be fully registered with the NZ Riding Pony Society (Inc), that is to have permanent registration number. Be 148cm or under, and to be foaled in New Zealand.
- The Pony must be ridden by a rider under the age of 17 years.
- Permanent Registration Number (NZRP) must be stated on the entry form.
- If it is subsequently found that the winner is not registered with the Society, they will be required to forfeit this award.
- The NZ Riding Pony Society NZ has donated special sashes for the following class.
- Winner must be able to show the ring steward their registration certificate before receiving the sash.
- Refer to page 14 for the NZ Riding Pony Society Rules.

NZRPS classes sponsored by halter sash for 1st place and 2nd-4th sashes by NZ RIDING PONY SOCIETY

542 NZ RIDING PONY SOCIETY Ridden Pony/Saddle Hunter **\$5.00**

Pony must be fully registered with the NZ Riding Pony Society (INC), that is to have permanent registration number, be 148cm or under, and to be foaled in NZ. NZRP will provide a Halter Sash for 1st place and 2nd-4th sashes.

Junior Rider

FOLLOWS NZ RIDING PONY
HOY qualifier

Junior Rider classes are sponsored by CAMBRIDGE EQUESTRIAN

530	Best Novice Junior Rider 0-5 wins	\$5.00	PM: \$ 15, 10, 5
531	Best Rider 11 years and under	\$5.00	PM: \$ 15, 10, 5
532	Best Rider 12, 13 and 14 years	\$5.00	PM: \$ 15, 10, 5
533	Best Rider 15 and 16 years	\$5.00	PM: \$ 15, 10, 5

CHAMPION JUNIOR RIDER

To be judged from the winners of classes 531, 532 and 533. Second placed rider to the Champion to be judged alongside the remaining winners for Reserve.

RESERVE CHAMPION JUNIOR RIDER

Show Ponies

FOLLOWS JUNIOR RIDING CLASSES
HOY qualifier

- A pony may only be entered in the Show Pony Section or Saddle Hunter Pony Section - NOT BOTH.
- All novice pony classes are open to riders of any age.
- Group A Show Pony, over 138cm and not exceeding 148cm (classes 550-555)
- Group B Show Pony, over 128cm and not exceeding 138cm (classes 556-561)
- Group C Show Pony, not exceeding 128cm (classes 562-567).
- The combining of A, B & C rings is not permitted.

Show Ponies classes are sponsored by:

Group A: PHOENICIAN STUD

Group B: VILLA PARK EQUINE

Group C: MRS ANN BAGLEY

Showing Arena 4

Group B

12:00 PM	556	Novice Show Pony over 128cm & not exceeding 138cm 0-2 wins	\$5.00	PM: \$ 15, 10, 5
	557	Novice Show Pony over 128cm & not exceeding 138cm 0-5 wins	\$5.00	PM: \$ 15, 10, 5

CHAMPION NOVICE SHOW PONY over 128cm & not exceeding 138cm

To be judged from winner of classes 556 and 557. Second placed pony to the Champion to be judged alongside the remaining winner for Reserve. Winner eligible for Novice Pony Supreme Champion of the Show.

RESERVE CHAMPION NOVICE SHOW PONY over 128cm & not exceeding 138cm

558	Novice Paced & Mannered Show Pony over 128cm & not exceeding 138cm	\$5.00	PM: \$ 15, 10, 5
559	Open Show Pony over 128cm & not exceeding 133cm	\$5.00	PM: \$ 15, 10, 5
560	Open Show Pony over 133cm & not exceeding 138cm	\$5.00	PM: \$ 15, 10, 5

Topsey Turvey Trophy

CHAMPION OPEN SHOW PONY over 128cm & not exceeding 138cm

To be judged from the winner of class 559 and 560. Second placed pony to the Champion to be judged alongside the remaining winner for Reserve. Winner eligible for Supreme Champion Pony. Eligible RAS Champion Sash & Medal Open Champion Pony.

RESERVE CHAMPION OPEN SHOW PONY over 128cm & not exceeding 138cm

561	Open Paced & Mannered Show Pony over 128cm & not exceeding 138cm	\$5.00	PM: \$ 15, 10, 5
-----	--	---------------	------------------

Winner eligible for Supreme Champion Paced & Mannered Pony of the Show

Showing Arena 5 Group C

12:00 PM	562	Novice Show Pony not exceeding 128cm 0-2 wins	\$5.00	PM: \$ 15, 10, 5
	563	Novice Show Pony not exceeding 128cm 0-5 wins	\$5.00	PM: \$ 15, 10, 5

CHAMPION NOVICE SHOW PONY not exceeding 128cm

To be judged from the winner of classes 562 and 563. Second placed pony to the Champion to be judged alongside the remaining winner for Reserve. Winner eligible for Novice Pony Supreme Champion of the Show.

RESERVE CHAMPION NOVICE SHOW PONY not exceeding 128cm

	564	Novice Paced & Mannered Show Pony not exceeding 128cm	\$5.00	PM: \$ 15, 10, 5
	565	Open Show Pony not exceeding 123cm	\$5.00	PM: \$ 15, 10, 5
	566	Open Show Pony over 123cm & not exceeding 128cm	\$5.00	PM: \$ 15, 10, 5

CHAMPION OPEN SHOW PONY not exceeding 128cm

To be judged from the winner of classes 565 and 566. Second placed pony to the Champion to be judged alongside the remaining winner for Reserve. Winner eligible for Supreme Champion Pony. Eligible RAS Champion Sash & Medal Open Champion Pony.

RESERVE CHAMPION OPEN SHOW PONY not exceeding 128cm

Eligible for RAS Reserve Champion Sash awarded to Open Reserve Champion Pony.

	567	Open Paced & Mannered Show Pony not exceeding 128cm	\$5.00	PM: \$ 15, 10, 5
--	-----	--	---------------	------------------

Winner eligible for Supreme Champion Paced & Mannered Pony of the Show.

Showing Arena 3 Group A

12:00 PM	550	Novice Show Pony over 138cm & not exceeding 148cm 0-2 wins	\$5.00	PM: \$ 15, 10, 5
	551	Novice Show Pony over 138cm & not exceeding 148cm 0-5 wins	\$5.00	PM: \$ 15, 10, 5

CHAMPION NOVICE SHOW PONY over 138cm & not exceeding 148cm

To be judged from the winner classes 550 and 551. Second placed pony to the Champion to be judged alongside the remaining winner for Reserve. Winner eligible for Novice Pony Supreme Champion of the Show.

RESERVE CHAMPION NOVICE SHOW PONY over 138cm & not exceeding 148cm

	552	Novice Paced & Mannered Show Pony over 138cm & not exceeding 148cm 0-5 wins	\$5.00	PM: \$ 15, 10, 5
	553	Open Show Pony over 138cm & not exceeding 143cm	\$5.00	PM: \$ 15, 10, 5
	554	Open Show Pony over 143cm & not exceeding 148cm	\$5.00	PM: \$ 15, 10, 5

CHAMPION OPEN SHOW PONY over 138cm & not exceeding 148cm

To be judged from winner of classes 553 and 554. Second placed show pony to the Champion to be judged alongside the remaining winner for Reserve. Winner eligible for Supreme Champion Pony. Eligible RAS Champion Sash & Medal Open Champion Pony.

RESERVE CHAMPION OPEN SHOW PONY over 138cm & not exceeding 148cm

Eligible for RAS Reserve Champion Sash awarded to Open Reserve Champion Pony.

	555	Open Paced & Mannered Show Pony over 138cm & not exceeding 148cm	\$5.00	PM: \$ 15, 10, 5
--	-----	---	---------------	------------------

Winner eligible for Supreme Champion Paced & Mannered Pony of the Show

Pony Breeders of NZ Ridden Pony

FOLLOWS SHOW PONIES

Showing Arena 3

541 PONY BREEDERS Ridden Sash **\$5.00**

Pony must be fully registered with the Pony Breeder's Society of NZ (INC), that is to have permanent registration number, be 148cm or under, and to be foaled in NZ. The pony must be ridden by a rider under the age of 17 years.

Lead Rein Ponies

HOY qualifier

- Ponies 128cm and under.
- In this section, the judging criteria is 60% suitability, temperament, and safeness, and 40% conformation and paces.
- Riders who have competed in First Ridden, Novice or Open sections are no longer eligible for this section.
- Riders in this section may not enter any other Lead Rein section unless in a Lead Rein class(es) in a Breed section.
- Riders must be under eight (8) years of age, with a minimum age of four (4) years, as at 1 August 2025.
- Pony to be led by a leader/attendant (14 years and over) with the lead rein attached to the cavesson noseband of a snaffle bridle.
- Spurs are not allowed although a small cane may be carried.

LEAD REIN NATIONAL SADDLE HUNTER AND SHOW PONY SERIES CLASSES POINTS

- A pony may only be entered in the Saddle Hunter Pony or Show Pony class - NOT BOTH. NOT HOY qualifiers. These classes do not qualify for Champion Lead Rein Pony. Sashes 1st-4th.
- Saddle Hunter Pony - must display saddle hunter characteristics. To be judged on type.
- Show Pony - must display show pony characteristics. To be judged on type.

Lead Rein classes are sponsored by JENNI CALVER

Goodies bags kindly sponsored by LumberJack Logging.

Showing Arena 6

1 :00 PM	578	Novice Lead Rein Pony not exceeding 128cm 0-5 wins	\$5.00	PM: \$ 15, 10, 5
	579	Best Lead Rein Saddle Hunter Pony not exceeding 128cm	\$5.00	
	580	Best Lead Rein Show Pony not exceeding 128cm	\$5.00	
	581	Open Lead Rein Pony not exceeding 123cm	\$5.00	PM: \$ 15, 10, 5
	582	Open Lead Rein Pony over 123cm & not exceeding 128cm	\$5.00	PM: \$ 15, 10, 5

CHAMPION LEAD REIN PONY

To be judged from the winners of classes 578, 581 and 582. Second placed pony to the Champion to be judged alongside the remaining winners for Reserve. Moffet Family Cup. Garland kindly sponsored by KS Stud.

RESERVE CHAMPION LEAD REIN PONY

	583	Open Paced & Mannered Lead Rein Pony not exceeding 128cm	\$5.00	PM: \$ 15, 10, 5
	584	Novice Lead Rein Rider 0-5 wins	\$5.00	PM: \$ 15, 10, 5
	585	Best Lead Rein Rider	\$5.00	PM: \$ 15, 10, 5



First Ridden Ponies

FOLLOWS LEAD REIN PONIES (UNLESS NO PONY CROSS OVER THEN WILL BE RUN CONCURRENTLY)
HOY qualifier

- 138cm and under.
- This is a transition ring from being led to riding your own.
- In this section, the judging criteria is 60% suitability, temperament, and safeness, and 40% conformation and paces.
- Riders in this section may not enter any other section unless in a First Ridden class(es) in a Breed section.
- A First Ridden rider is only able to compete in this section for a maximum of 24 months from the date of their first Show.
- The age limit in the First Ridden Section is under ten (10) years, as at 1 August 2025.

FIRST RIDDEN PONIES NATIONAL SADDLE HUNTER AND SHOW PONY SERIES CLASSES POINTS

- A pony may only be entered in the Saddle Hunter Pony or Show Pony class - NOT BOTH. NOT HOY qualifier. These classes do not qualify for Champion First Ridden. Sashes 1st-4th.
- Saddle Hunter Pony - must display saddle hunter characteristics. To be judged on type.
- Show Pony - must display show pony characteristics. To be judged on type.

First Year Ridden classes are sponsored by JENNI CALVER

Goodies bags kindly sponsored by SkinAware Gisborne.

Showing Arena 6

586	Novice First Ridden Pony not exceeding 138cm 0-5 wins	\$5.00	PM: \$ 15, 10, 5
587	Best First Ridden Saddle Hunter Pony not exceeding 138cm	\$5.00	
588	Best First Ridden Show Pony not exceeding 138cm	\$5.00	
589	Open First Ridden Pony not exceeding 128cm	\$5.00	PM: \$ 15, 10, 5
590	Open First Ridden Pony over 128cm & not exceeding 138cm	\$5.00	PM: \$ 15, 10, 5

CHAMPION FIRST RIDDEN PONY

To be judged from the winners of classes 586, 589 and 590. Second place to the Champion to be judged alongside the remaining winners for Reserve. Moffet Family Cup. Garland kindly sponsored by Bourkesafe Ltd.

RESERVE CHAMPION FIRST RIDDEN PONY

591	Novice Paced & Mannered First Ridden Pony 0-5 wins	\$5.00	PM: \$ 15, 10, 5
592	Open Paced & Mannered First Ridden Pony	\$5.00	PM: \$ 15, 10, 5
593	Novice Rider First Ridden section 0-5 wins	\$5.00	PM: \$ 15, 10, 5
594	Open Rider First Ridden section	\$5.00	PM: \$ 15, 10, 5



S H O W I N G

H O R S E S H O W I N G S E C T I O N

T H U R S D A Y C L A S S E S

Golf Mania Paddock

Hacks

SAME TIME AS PARK HACKS

HOY qualifier

- A Hack should show quality, gaiety with very good paces. It must be well mannered and capable of giving its rider a pleasant and easy ride for a short journey.
- An exhibit may only be entered in the Show Hack or Park Hack or Riding Horse or Saddle Hunter section.
- An exhibit may only be entered in a Lady's or Gentleman's class - NOT BOTH.
- Classes may be combined if insufficient entries.

Hack classes are sponsored by JENNI CALVER

Thursday, 16 October 2025

8:30 am

Showing Arena 2

			<u>Entry Fee</u>	<u>Prize Money</u>
8 :30 AM	620	Novice Hack over 158cm 0-2 wins	\$8.00	PM: \$ 20, 15, 10
	621	Novice Hack over 158cm 0-5 wins	\$8.00	PM: \$ 20, 15, 10

CHAMPION NOVICE HACK

To be judged from the winners of classes 620 and 621. Second placed hack to the Champion to be judged alongside the remaining winners for Reserve. Winner eligible for Novice Horse Supreme Champion of the

RESERVE CHAMPION NOVICE HACK

	622	Novice Paced & Mannered Hack 0-5 wins	\$8.00	PM: \$ 20, 15, 10
	623	Open Lady's Hack on Type - Lady or Gentleman Rider	\$8.00	PM: \$ 20, 15, 10
	624	Open Gentleman's Hack on Type - Lady or Gentleman Rider	\$8.00	PM: \$ 20, 15, 10
	625	Open Hack over 158cm and not exceeding 163cm	\$8.00	PM: \$ 20, 15, 10
	626	Open Hack over 163cm	\$8.00	PM: \$ 20, 15, 10

CHAMPION OPEN HACK

To be judged from the winners of classes 625 and 626. Second place horse to the Champion to be judged alongside the remaining winners for Reserve. Winner eligible for Supreme Champion Horse. Mrs E W White Perpetual Salve. Eligible RAS Champion Sash & Medal award Open Champion Horse.

RESERVE CHAMPION OPEN HACK

	627	Open Paced & Mannered Hack	\$8.00	PM: \$ 20, 15, 10
--	-----	----------------------------	---------------	-------------------

Winner eligible for Supreme Champion Paced & Mannered Horse of the Show. Maungaparae Cup



Park Hack

SAME TIME AS HACKS

HOY qualifier

- A Park Hack should show quality, gaiety with very good paces. It must be well mannered and capable of giving its rider a pleasant and easy ride for a short journey.
- An exhibit may only be entered in the Show Hack or Park Hack or Riding Horse or Saddle Hunter section.
- An exhibit may only be entered in a Lady's or Gentleman's class - NOT BOTH.
- Classes may be combined if insufficient entries.

Park Hack classes are sponsored by UNIVERSAL ENGINEERING

Showing Arena 1

8 :30 AM	610	Novice Park Hack over 148cm & not exceeding 158 cm 0-2 wins	\$8.00	PM: \$ 20, 15, 10
	611	Novice Park Hack over 148cm & not exceeding 158cm 0-5 wins	\$8.00	PM: \$ 20, 15, 10

CHAMPION NOVICE PARK HACK

To be judged from the winners of classes 610 and 611. Second placed hack to the Champion to be judged alongside the remaining winner for Reserve. Winner eligible for Novice Horse Supreme Champion of the Show.

RESERVE CHAMPION NOVICE PARK HACK

612	Novice Paced & Mannered Park Hack 0-5 wins	\$8.00	PM: \$ 20, 15, 10
613	Open Lady's Park Hack on Type - Lady or Gentleman Rider	\$8.00	PM: \$ 20, 15, 10
614	Open Gentleman's Park Hack on Type - Lady or Gentleman Rider	\$8.00	PM: \$ 20, 15, 10
615	Open Park Hack over 148cm & not exceeding 153cm	\$8.00	PM: \$ 20, 15, 10
616	Open Park Hack over 153cm & not exceeding 158cm	\$8.00	PM: \$ 20, 15, 10

CHAMPION OPEN PARK HACK

To be judged from the winner of classes 615 and 616. Second placed horse to the Champion to be judged alongside the remaining winners for Reserve. Winner eligible for Supreme Champion Horse. Eligible RAS Champion Sash & Medal award Open Champion Horse.

RESERVE CHAMPION OPEN PARK HACK

617	Open Paced & Mannered Park Hack	\$8.00	PM: \$ 20, 15, 10
-----	---------------------------------	---------------	-------------------

*Eligible for RAS Reserve Champion Sash awarded to Open Reserve Champion Horse.
Winner eligible for Supreme Paced & Mannered Horse of the Show*



NZTR Thoroughbred

FOLLOWS HACK AND PARK HACK CLASSES

- No entries accepted after entries have closed.
- Thoroughbred horse - registered in any recognised Thoroughbred Stud Book, either in NZ or overseas.
- Sire and Dam of Thoroughbred - must be listed at time of entry. If not listed, then the entry will not be accepted by the Show/Event.
- Prize Money - 1st \$100; 2nd \$50; 3rd \$30; 4th \$20 will be awarded if 4 or more entries are in the class at close of entry date.
- 3 entries or less - no prize money awarded. Ribbons awarded to fourth place.
- Series Winner 2025.2026 - will be announced at HOY 2026.
- Judging: 80% Confirmation, 20% Paces & Manners.
- Judges to assess each Horse individually with Saddles removed. After they have been assessed, Ridden Horses to Show true Thoroughbred qualities. Horses to show a good walk as well as Gallop (room permitting).

Showing Arena 1

618 Ridden Thoroughbred

\$0.00 PM: \$ 100, 50, 30, 20



Senior Rider

FOLLOWS NZTR THOROUGHBRED

HOY qualifier

- Open to all riders, 17 years and over, on horses over 148cm.

Senior Rider classes are sponsored by LUMBERJACK LOGGING

630	Best Novice Rider 17 years and over 0-5 wins	\$8.00	PM: \$ 20, 15, 10
631	Best Rider 17 years and under 21 years	\$8.00	PM: \$ 20, 15, 10
632	Best Rider 21 years and over	\$8.00	PM: \$ 20, 15, 10

CHAMPION SENIOR RIDER

To be judged from winners of classes 631 and 632. Second placed Rider to the Champion to be judged alongside the remaining winners for Reserve.

RESERVE CHAMPION SENIOR RIDER

Riding Horse

FOLLOWS SENIOR RIDER

HOY qualifier

- A Riding Horse is a Saddle Horse, which does not fit the criteria of a Show/Park Hack or Saddle Hunter but is of type between the three. It is a quality Show horse of excellent confirmation, soundness and manners with a free forward even pace with elegance and more bone and substance than a Show Hack, but less than a Saddle Hunter.
- Riding Horse to be judged on type and conformation 60%, manners and paces 40%.
- An exhibit may only be entered in the Show Hack or Riding Horse or Saddle Hunter section.
- An exhibit may only be entered in a Lady's or Gentleman's class - NOT BOTH.
- Horses will be required to gallop within the confines and constraints on the venue involved.
- The Novice status of the horse from previous Show Hack, Park Hack or Saddle Hunter competitions will apply to this 'Riding Horse' section.
- Classes may be combined if insufficient entries.

Riding Horse classes are sponsored by ROYALTON SHOW HORSES

640	Novice Riding Horse over 148cm 0-2 wins	\$8.00	PM: \$ 20, 15, 10
641	Novice Riding Horse over 148cm 0-5 wins	\$8.00	PM: \$ 20, 15, 10

CHAMPION NOVICE RIDING HORSE

To be judged from the winner of classes 640 and 641. Second placed horse to the Champion to be judged alongside the remaining winner for Reserve. Winner eligible for Novice Horse Supreme Champion of the Show.

RESERVE CHAMPION NOVICE RIDING HORSE

642	Novice Paced & Mannered Riding Horse 0-5 wins	\$8.00	PM: \$ 20, 15, 10
643	Open Lady's Riding Horse on Type - Lady or Gentleman Rider	\$8.00	PM: \$ 20, 15, 10
644	Open Gentleman's Riding Horse on Type - Lady or Gentleman Rider	\$8.00	PM: \$ 20, 15, 10
645	Open Riding Horse over 148cm & not exceeding 163cm	\$8.00	PM: \$ 20, 15, 10
646	Open Riding Horse over 163cm	\$8.00	PM: \$ 20, 15, 10

CHAMPION OPEN RIDING HORSE

To be judged from the winners of classes 645 and 646. Second placed Riding Horse to the Champion to be judged alongside the remaining winners for Reserve. Winner eligible for Supreme Champion Horse. Eligible RAS Champion Sash & Medal Open Champ Horse

RESERVE CHAMPION OPEN RIDING HORSE

647	Open Paced & Mannered Riding Horse	\$8.00	PM: \$ 20, 15, 10
-----	------------------------------------	---------------	-------------------

*Eligible for RAS Reserve Champion Sash awarded to Open Reserve Champion Horse.
Winner eligible for Supreme Champion Paced & Mannered Horse of the Show*

Saddle Hunter

FOLLOWS RIDING HORSES

HOY qualifier

- The Saddle Hunter shown under saddle should have bone, substance, be active and well-mannered with strong easy paces. It must be capable of carrying the rider for a long distance over varied country.
- Horses over 148cm.
- An exhibit may only be entered in the Show Hack or Park Hack or Riding Horse or Saddle Hunter section.
- An exhibit may only be entered in a Lady's or Gentleman's class - NOT BOTH.
- Horses will be required to gallop within the confines and constraints of the venue involved.

Saddle Hunter classes are sponsored by WAIRAKAIA PARTNERSHIP

12:00 PM	650	Novice Saddle Hunter 0-2 wins	\$8.00	PM: \$ 20, 15, 10
	651	Novice Saddle Hunter 0-5 wins	\$8.00	PM: \$ 20, 15, 10

CHAMPION NOVICE SADDLE HUNTER

To be judged from the winner of classes 650 and 651. Second placed hunter to the Champion to be judged alongside the remaining winner for Reserve. Winner eligible for Novice Horse Supreme Champion of the Show.

RESERVE CHAMPION NOVICE SADDLE HUNTER

652	Novice Paced & Mannered Saddle Hunter 0-5 wins	\$8.00	PM: \$ 20, 15, 10
653	Open Lady's Saddle Hunter on Type - Lady or Gentleman Rider	\$8.00	PM: \$ 20, 15, 10
654	Open Gentleman's Saddle Hunter on Type - Lady or Gentleman Rider	\$8.00	PM: \$ 20, 15, 10
655	Open Saddle Hunter over 148cm & not exceeding 163cm	\$8.00	PM: \$ 20, 15, 10
656	Open Saddle Hunter over 163cm	\$8.00	PM: \$ 20, 15, 10

CHAMPION OPEN SADDLE HUNTER

To be judged from the winners of classes 655 and 656. Second placed horse to the Champion to be judged alongside the remaining winners for Reserve. Winner eligible for Supreme Champion Horse of the Show. Eligible RAS Champion Sash & Medal Open Champ

RESERVE CHAMPION OPEN SADDLE HUNTER

657	Open Paced & Mannered Saddle Hunter	\$8.00	PM: \$ 20, 15, 10
-----	-------------------------------------	---------------	-------------------

*Eligible for RAS Reserve Champion Sash awarded to Open Reserve Champion Horse.
Winner eligible for Supreme Champion Paced & Mannered Horse of the Show.*

Supreme Awards - Horses

Timing will be notified on the day (will be the last class run).

Order of judging:

- Novice Horse Supreme Champion - To be judged from Novice Champion Hack, Park Hack, Riding Horse and Saddle Hunter.
- Supreme Champion Paced & Mannered Horse of the Show - Winners of Open Paced & Mannered Horse classes.
- Supreme Champion Horse - To be judged from Champion Hack, Park Hack, Riding Horse and Saddle Hunter.

Showing Arena 1

NOVICE HORSE SUPREME CHAMPION

Garland kindly sponsored by Villa Park Equine

SUPREME CHAMPION PACED & MANNERED HORSE OF THE SHOW

Garland kindly sponsored by the Hansen Family.

SUPREME CHAMPION HORSE

Garland kindly sponsored by the Harris Family. RAS Supreme Sash and Medal.

Supreme Awards - Ponies

- Novice Pony Supreme Champion - To be judged from Novice Champion Saddle Hunters and Show Ponies.
- Supreme Champion Paced & Mannered Pony of the Show - Winners of Open Paced & Mannered Pony classes.
- Supreme Champion Pony - Winners of Open Pony Saddle Hunter Champions and Open Show Pony Champions.

NOVICE PONY SUPREME CHAMPION

Garland kindly sponsored by Wendy Hindrup

SUPREME CHAMPION PACED & MANNERED PONY OF THE SHOW

Garland kindly sponsored by Moss Family.

SUPREME CHAMPION PONY

Garland kindly sponsored by Brigid Sherriff. RAS Supreme Sash and Medal.

RAS Medal and Sash

RAS SUPREME SASH AND MEDAL (Supreme)

Pony, Horse and AllBreeds, excluding Side Saddle and Standardbred.

RAS CHAMPION SASH AND MEDAL (Open Supreme)

Pony, Horse and AllBreeds.

RAS RESERVE CHAMPION SASH (Open Reserve Champion)

Pony, Horse and AllBreeds.

Best Presented Showing Combinations

Rosette awarded to ten combinations entered in Thursday's Showing classes. Combination from any section, horse and/or pony.

BEST PRESENTED SHOWING COMBINATIONS (10)

Local Showing Rider Most Points

Local junior and senior Showing Rider most points.

LOCAL SHOWING JUNIOR RIDER WITH MOST POINTS

Award kindly sponsored by the Moss Family

LOCAL SHOWING SENIOR RIDER WITH MOST POINTS

Award kindly sponsored by the Moss Family

Overall Awards

Best Pony of the Show - Charlie Sheaff Cup

Local pony - Most points in all classes. Charlie Sheaff Cup

Most Points in Horse Section

Miller Trust Silver Challenge Cup

Most Points in Horse Jumping Section by Lady Rider

S D Nathan Cup

Champion Lady Rider of the Show

Most points in all open classes. Master Burleigh Trophy

Champion Horse of the Show

Most points in all open classes. Smiley John Salve

150

YEARS



P O N I E S

W O R K I N G H U N T E R S

H U N T E R J U M P I N G

F R I D A Y C L A S S E S

Working Hunter - Ponies

HOY qualifier

- Working Hunter Ponies are required to demonstrate jumping ability and be of good strong confirmation with good manners, sound paces and be a comfortable ride over long distances.
- They will be required to jump a minimum of three (3) hunter type fences.
- Jumping style and ability 40%, confirmation 30%, paces and manners 30%.
- Ponies will be required to gallop within the confines and constraints of the venue involved.
- Numbers must be worn (armbands numbers are acceptable).
- No boots or bandages permitted
- Maximum Height Small ponies (138cm and under) 65cm
- Maximum Height Large ponies (not exceeding 148cm) 85cm

Working Hunter classes are sponsored by RIVERINA LTD

Friday, 17 October 2025

9:00 am

Trust Tairawhiti Main Arena

			<u>Entry Fee</u>	<u>Prize Money</u>
9 :00 AM	420	Novice Working Hunter Pony 0-2 wins	\$8.00	PM: \$ 25, 15, 10
	421	Novice Working Hunter Pony 0-5 wins	\$8.00	PM: \$ 25, 15, 10
	422	Open Working Hunter Pony not exceeding 138cm	\$8.00	PM: \$ 25, 15, 10
	423	Open Working Hunter Pony over 138cm & not exceeding 148cm	\$8.00	PM: \$ 25, 15, 10

CHAMPION WORKING HUNTER PONY

To be judged from winner of classes 422 and 423. Second placed pony to the champion to be judged alongside the remaining winners for Reserve. Eligible for RAS Champion Sash and Medal awarded to Open Champion Pony.

RESERVE CHAMPION PONY WORKING HUNTER

424	Pony Wire Jump		\$8.00	PM: \$ 25, 15, 10
	<i>Sir Winston Challenge Cup</i>			



Hunter Jumping - Ponies

FOLLOWS WORKING HUNTER PONY (A short break if time allows; to conclude before 1pm).

HOY Qualifier

- Height certificates and novice cards must be carried at all times and presented on request, otherwise the exhibitor will not be allowed to start.
- Numbers must be worn (armband numbers are acceptable).
- Maximum Height Small Ponies (138cm and under) 70cm
- Maximum Height Large Ponies (not exceeding 148cm) 90cm

Hunter Jumping classes are sponsored by RIVERINA LTD

410	Novice Pony Hunter over fences 0-2 wins	\$8.00	PM: \$ 25, 15, 10
411	Novice Pony Hunter over fences 0-5 wins	\$8.00	PM: \$ 25, 15, 10
	<i>WL Rutledge Challenge Cup</i>		
412	Open Pony Hunter over fences not exceeding 138cm	\$8.00	PM: \$ 25, 15, 10
413	Open Pony Hunter over fences over 138cm & not exceeding 148cm	\$8.00	PM: \$ 25, 15, 10

Kevin Hall Memorial Cup

CHAMPION HUNTER JUMPING PONY

To be judged from classes 412 and 413. Second placed pony to the Champion to be judged alongside the remaining winner for Reserve. Eligible for RAS Champion Sash and Medal awarded to Open Champion Pony.

RESERVE CHAMPION HUNTER JUMPING PONY

Eligible for RAS Reserve Champion Sash awarded to Open Reserve Champion Pony.

CHAMPION RIDER HUNTER JUMPING PONY

Judged in conjunction with classes 410-413.

RESERVE CHAMPION RIDER HUNTER JUMPING PONY

Judged in conjunction with classes 410-413.



H O R S E S

W O R K I N G H U N T E R S

H U N T E R J U M P I N G

S A T U R D A Y C L A S S E S

Working Hunter - Horses

HOY qualifier

- Working Hunter Horses are required to demonstrate jumping ability and be of good strong confirmation with good manners, sound paces and be a comfortable ride over long distances.
- They will be required to jump a minimum of three (3) hunter type fences. Jumping style and ability 40%, confirmation 30%, paces and manners 30%.
- Horses will be required to gallop within the confines and constraints of the venue involved.
- Numbers must be worn (armband numbers are acceptable).
- No boots or bandages permitted.
- Maximum Height 1.05m

Working Hunter classes are sponsored by HAVELOCK NORTH HOLIDAY PARK

Saturday, 18 October 2025

8:00 am

Trust Tairawhiti Main Arena

			<u>Entry Fee</u>	<u>Prize Money</u>
8 :00 AM	430	Novice Working Hunter Horse 0-2 wins	\$8.00	PM: \$ 25, 15, 10
	431	Novice Working Hunter Horse 0-5 wins	\$8.00	PM: \$ 25, 15, 10
	432	Open Working Hunter Horse over 148cm and not exceeding 153cm	\$8.00	PM: \$ 25, 15, 10
	433	Open Working Hunter Horse over 153cm and not exceeding 163cm	\$8.00	PM: \$ 25, 15, 10
	434	Open Working Hunter Horse over 163cm	\$8.00	PM: \$ 25, 15, 10

CHAMPION WORKING HUNTER HORSE

To be judged from the winner of classes 432, 433 and 434. Second placed horse to the Champion to be judged alongside the remaining winners for Reserve. Paddy O'Flynn Challenge Cup. Eligible Champion Sash & Medal awarded Open Champion Horse.

RESERVE CHAMPION WORKING HUNTER HORSE

Eligible for RAS Reserve Champion Sash awarded to Open Reserve Champion Horse.

435	Horse Wire Jump - 2 wires	\$8.00	PM: \$ 25, 15, 10
-----	---------------------------	---------------	-------------------

Mrs M W Coop Silver Cup



Hunter Jumping - Horses

FOLLOWS WORKING HUNTERS (A short break if time allows; to conclude before 1pm).

HOY qualifier

- Height certificates and novice cards must be carried at all times and presented on request, otherwise the exhibitor will not be allowed to start.
- Numbers must be worn (armband numbers are acceptable).
- Maximum Height 1.10m

Hunter Jumping classes are sponsored by EMERRE & HATHAWAY INSURANCE

440	Eyeopener Jump <i>Full round includes single brush and wire</i>	\$8.00	PM: \$ 25, 15, 10
441	Novice Hunter over fences 0-5 wins <i>First 3 jumps. Nigel Park Memorial Cup</i>	\$8.00	PM: \$ 25, 15, 10
442	Open Hunter over fences, over 148cm and not exceeding 163cm <i>Full round including double brush and wire.</i>	\$15.00	PM: \$ 100, 50, 35, 15
443	Open Hunter over fences, over 163cm <i>Full round including double brush and wire. RK Murphy Memorial Salve (to winning Lady)</i>	\$15.00	PM: \$ 100, 50, 35, 15
444	Open Hunter over fences, over 148cm <i>Full round including double brush and wire. One refusal will cause elimination and the competitor must leave the ring forthwith or be liable to disqualification in any further classes. Asquirth Silver Cup. Nicholls Cup to best placed Lady rider</i>	\$20.00	PM: \$ 200, 150, 100, 50

CHAMPION HUNTER JUMPING HORSE

To be awarded to 1st and 2nd placegetters in the Open Hunter over fences class 444. Eligible for RAS Champion Sash and Medal awarded to Open Champion Horse. Garland kindly sponsored by Carleen Hickling.

RESERVE CHAMPION HUNTER JUMPING HORSE

Eligible for RAS Reserve Champion Sash awarded to Open Reserve Champion Horse.

CHAMPION RIDER HUNTER JUMPING HORSE

Judged in conjunction with classes 442-444

RESERVE CHAMPION RIDER HUNTER JUMPING HORSE

Judged in conjunction with classes 442-444

445 Pairs Hunter Jump over fences (entries taken on the day)



Showing Conditions

- All flat classes will be held in the Showing Arena (multiple rings will be operating) - Golf Mania paddock.
- Horses will be in arena 1 and 2. Ponies (except FR and LR) will be in arena 3, 4 and 5. First Ridden and Lead Rein Ponies will be in arena 6.
- All jumping classes will be held in the Trust Tairawhiti Main Oval.
- Any enquiries to be directed to Jessie Bourke, admin@bourkesafe.co.nz. Or message Facebook - Poverty Bay A&P Equestrian "Showies"

Rules for the Showing Section

Fall of Rider. GR8 - If a rider has a fall or suspected head injury, at any time at a RAS affiliated Show/Event in the: competition ring/arena, practise/warmup/collecting ring/arena; or elsewhere within the grounds of where the show/event is to be convened, the rider must be removed from the activity and checked by the show/event's nominated First Aid service/personnel and be given the 'all-clear' before the rider is permitted to re-mount and continue riding at the show/event.

GR4: hats/helmets must conform with one of the current approved safety standards. These standards may be subject to change. All hats/helmets that conform must be identified by the current tag system (YELLOW) implemented by NZPCA, ESNZ and RAS - <http://www.ras.org.nz/equestrian/health-and-safety/>

- Height certificates and novice cards MUST always be carried and presented on request, otherwise the exhibitor will not be allowed to start.
- Supreme classes: If you are eligible and do not present for your Supreme class, then no prize money will be awarded (unless a genuine reason to put forward in person to the Head Steward).
- Classification (section) nominated. Choice made by owners at the time of the horse/pony's measure as to which classification they wish to show in. The classifications are as follows: Horse - Hack (includes Park Hack), Saddle Hunter, Riding Horse; Pony - Show Pony or Saddle Hunter Pony.
- Microchips do not exempt riders from a current height certificate.
- All competitors MUST wear numbers in the ring. It is the competitors' responsibility to supply their own numbers. This includes Working Hunter and Hunter Jumping for both horses and ponies (an armband numbers for these classes are acceptable and generally used at other A&P competitions/HOY for safety reasons). Numbers must be worn for in hand.
- A novice horse/pony/rider is one that has not yet had six wins in total in open and/or novice classes in any division within the competitions provided at any A&P Show. Once a horse/pony/rider has achieved the sixth win in a division the horse/pony/rider must then compete in the appropriate open classes.
- All novice wins (be they wins in a novice or open class) must be recorded on a current performance card and signed by the steward or judge.
- Any horse/pony which misbehaves to the extent that it unduly disturbs other competitors must leave the ring if asked to do so. Rings will not be held for riders who are competing in other sections/classes.
- All Novice pony classes are open to riders of any age, in novice pony classes only, except that special rules are in place for ridden stallions.
- Rider/Handler's age and eligibility is determined as per the 1 August 2025, i.e Riders/handlers who are of age for any division/section on the 1 August complete the show year/season in that division/section.
- Horses/ponies, 3 years and under must not be ridden.
- Please note times are approximate and we will try to start on time, but this is dependent on entry numbers.
- Some classes may be combined where numbers are low.
- Showing section is run under RAS rules, and all current RAS rules apply as printed in the current RAS Equestrian Rulebook - www.ras.org.nz/equestrian/section/Rulebook Page
- It is compulsory that all Stallions/colts to be stabled in Stallion Boxes (see Poverty Bay A&P Show rules, regulations, conditions and information page).
- Under no circumstances are they to be yarded in the ordinary yards or tied to floats or trucks. It is compulsory for all stallions and colts, except foals, to wear two (2) official 'S' identification badges, one attached to each side of their bridle, at all Shows/Events always. The rider/handler must also wear two RAS official (2) armbands (one on each arm) when in the ring.
- Handlers and Riders of stallions/colts must wear an approved Hi Viz vest at Shows/Events when outside the showing ring.
- All stallions and colts must be shown in a bit.
- In the sport horse/pony in-hand classes adults can lead ponies and children can lead horses (if they are able to safely remain in control for the duration of the class). No child is to lead a horse or pony stallion/colt.
- Whisker and Inner Ear Trimming - as at 1 January 2022 - <https://www.ras.org.nz/whisker-and-inner-ear-trimming/>

T O M O R R O W ' S S T A R S

Tomorrow's Stars

TOMORROW'S STARS

- Riders may ride either a pony or horse
- Combinations are not eligible to enter any other section of the Show
- No lead reins riders
- This section is aimed at riders and mounts attending pony club and other pleasure activities
- Riders will be asked to canter, so need to be able to do unassisted
- No spurs allowed, but a whip may be carried, which must not exceed 76cm in length
- PLEASE NOTE: (R51) It is compulsory that ALL helmets are yellow tagged, conforming to the ESNZ/RAS requirements.
- Further information www.nzequestrian.org.nz and www.ras.org.nz.
- Riders must be under 17 years of age (proof of age may be requested) as at the date of the Show, 16 October 2025.
- Ribbons 1st to 6th place.
- Classes may be split if sufficient entries.
- Tomorrow's Stars Show Jumpers - McNaught Cup. To be held on Saturday, Ring 1 Farmers Transport Ltd, at the completion of the Horse Grand Prix.

Thursday, 16 October 2025

Trust Tairawhiti Main Arena

			<u>Entry Fee</u>	<u>Prize Money</u>
9 :00 AM	700	Best presented pony/horse, rider under 17 years	\$5.00	
	701	Best walking pony/horse, rider under 17 years	\$5.00	
	702	Best trotting pony/horse, rider under 17 years	\$5.00	
	703	Pony/horse most suitable for a beginner, rider under 17 years	\$5.00	
	704	Best paced & mannered pony/horse, rider under 17 years	\$5.00	
	705	Best combination, rider under 17 years	\$5.00	
	706	Best rider under 17 years	\$5.00	

CHAMPION TOMORROW'S STARS

To be judged from winner of above classes 703, 704 and 705. Second placed ponies/horses to be judged alongside the remaining winners for Reserve Champion.

RESERVE CHAMPION TOMORROW'S STARS

Saturday, 18 October 2025

Ring 1 Farmers Transport Ltd

707 TOMORROW'S STARS SHOW JUMPERS - MCNAUGHT CUP

40cm jumping class. Beginners only, mount or rider cannot enter any other classes at the Show, apart from Tomorrow's Section. This is a one round jumping event held on Saturday, in Ring 1 at the completion of the Horse Grand Prix. No entry fee.

